

# FIRST IMPRESSIONS

Because you have one chance to make a first impression

GET  
THE LATEST  
IN BAG  
STYLING  
WITH A  
MIDTOWN



2021

VOLUME 17D

FIRSTIMPRESSIONSPACKAGING.COM

## Two Piece Lock Corner Gift Boxes and One Piece Folders – WHITE AND NATURAL KRAFT

Always practical and economical, our many in-stock sizes of two piece lock corner boxes in white gloss or natural kraft offer you numerous options for packaging any item. With their unique “telescoping” capability, these boxes also allow you to package taller objects or odd sizes.



### Two Piece Lock Corner Gift Boxes

| Stock #  | Size LxWxH  | Case Pack |
|----------|---|-----------|
| GB332    | 3 x 3 x 2   | 100       |
| GB443    | 4 x 4 x 3   | 100       |
| GB553    | 5 x 5 x 3   | 100       |
| GB644    | 6 x 4 x 4   | 100       |
| GB661    | 6 x 6 x 1 <sup>5/8</sup>                                | 100       |
| GB664    | 6 x 6 x 4   | 100       |
| GB666    | 6 x 6 x 6   | 100       |
| GB753    | 7 x 5 x 3   | 100       |
| GB777    | 7 x 7 x 7   | 50        |
| GB882    | 8 x 8 x 2   | 100       |
| GB883    | 8 x 8 x 3 <sup>1/2</sup>                                | 100       |
| GB886    | 8 x 8 x 6   | 100       |
| GB921*   | 9 <sup>1/4</sup> x 2 <sup>1/4</sup> x 1 <sup>1/4</sup>  | 100       |
| GB944    | 9 x 4 <sup>1/2</sup> x 4 <sup>1/2</sup>                 | 100       |
| GB965    | 9 x 6 x 5   | 100       |
| GB992    | 9 x 9 x 2 <sup>3/4</sup>                                | 100       |
| GB995    | 9 x 9 x 5 <sup>1/2</sup>                                | 50        |
| GB999    | 9 x 9 x 9   | 50        |
| GB1055   | 10 x 5 x 5  | 100       |
| GB1072   | 10 x 7 x 2 <sup>1/2</sup>                               | 100       |
| GB1081   | 10 x 8 x 1 <sup>1/4</sup>                               | 100       |
| GB1031*  | 10 <sup>1/2</sup> x 3 <sup>1/2</sup> x 1 <sup>3/4</sup> | 100       |
| GB10102  | 10 <sup>1/2</sup> x 10 <sup>1/2</sup> x 2               | 100       |
| GB10105  | 10 <sup>1/2</sup> x 10 <sup>1/2</sup> x 5               | 50        |
| GB10108  | 10 <sup>1/2</sup> x 10 <sup>1/2</sup> x 8               | 50        |
| GB1133   | 11 x 3 x 3  | 100       |
| GB11114  | 11 x 11 x 3 <sup>3/4</sup>                              | 50        |
| GB1254   | 12 x 5 x 4  | 100       |
| GB1262   | 12 x 6 x 2  | 100       |
| GB1266   | 12 x 6 x 6  | 50        |
| GB1291   | 12 x 9 x 1 <sup>5/8</sup>                               | 100       |
| GB12122  | 12 x 12 x 2   | 50        |
| GB12123  | 12 x 12 x 3   | 50        |
| GB12125  | 12 x 12 x 5 <sup>1/2</sup>                              | 50        |
| GB12128  | 12 x 12 x 8   | 50        |
| GB121212 | 12 x 12 x 12  | 25        |
| GB13113* | 13 x 11 x 3   | 50        |
| GB1444   | 14 x 4 x 4  | 100       |
| GB1474   | 14 x 7 x 4  | 100       |
| GB1486   | 14 x 8 x 6  | 50        |
| GB14142  | 14 x 14 x 2   | 50        |
| GB14143  | 14 <sup>1/2</sup> x 14 <sup>1/2</sup> x 3               | 50        |
| GB14145  | 14 x 14 x 5   | 50        |
| GB14147  | 14 x 14 x 7   | 25        |
| GB14149  | 14 x 14 x 9   | 25        |

### Two Piece Lock Corner Gift Boxes

| Stock #  | Size LxWxH                               | Case Pack |
|----------|--|-----------|
| GB1576   | 15 x 7 x 6 <sup>1/2</sup>                | 50        |
| GB15102  | 15 x 10 x 2                              | 100       |
| GB15114  | 15 x 11 x 4                              | 50        |
| GB15153  | 15 x 15 x 3                              | 50        |
| GB15156  | 15 x 15 x 6 <sup>1/2</sup>               | 25        |
| GB1683*  | 16 x 8 x 3                               | 100       |
| GB16163  | 16 x 16 x 3                              | 50        |
| GB1732*  | 17 x 3 <sup>1/2</sup> x 2 <sup>1/4</sup> | 100       |
| GB1788   | 17 x 8 <sup>1/2</sup> x 8                | 25        |
| GB17112  | 17 x 11 x 2 <sup>1/2</sup>               | 50        |
| GB1855   | 18 x 5 <sup>1/2</sup> x 5 <sup>1/4</sup> | 50        |
| GB18182  | 18 x 18 x 2                              | 50        |
| GB18185  | 18 x 18 x 5                              | 25        |
| GB19123  | 19 x 12 x 3                              | 50        |
| GB19155* | 19 x 15 x 5                              | 25        |
| GB20142  | 20 x 14 x 2                              | 50        |
| GB20204  | 20 x 20 x 4 <sup>1/2</sup>               | 25        |
| GB24162  | 24 x 16 x 2 <sup>1/2</sup>               | 25        |
| GB24246  | 24 x 24 x 6                              | 25        |
| GB2576   | 25 x 7 x 6                               | 25        |
| GB25155  | 25 x 15 x 5                              | 25        |
| GB26112* | 26 x 11 x 2 <sup>1/2</sup>               | 25        |

### One Piece Folders

| Stock #  | Size LxWxH                              | Case Pack |
|----------|---|-----------|
| FL881*   | 8 <sup>1/2</sup> x 8 <sup>1/2</sup> x 1 | 100       |
| FL1041*  | 10 x 4 <sup>1/2</sup> x 1               | 100       |
| FL12121* | 12 x 12 x 1                             | 100       |
| FL2013*  | 20 x 13 <sup>3/4</sup> x 3/4            | 50        |

\*Denotes boxes are made to order with a 200 box minimum and 3-4 weeks for delivery - GB921, GB1031, GB13113, GB1683, GB1732, GB19155, GB26112, FL881, FL1041, FL12121 and FL2013.

One case minimum for imprinted boxes



All boxes are manufactured with 100% recycled materials. Our natural kraft boxes contain 100% post-consumer fibers. All boxes are tinted using water based inks and are recyclable.



## Two Piece Lock Corner Gift Boxes and One Piece Folders – COLORS

Our made to order colored giftware boxes coordinate beautifully with our shopping bags, gift and jewelry boxes and are available in a variety of sizes, making it easy to find packaging that suits your image. Choose from a large selection of trendy box colors available in matte or gloss finishes.

One case minimum for imprinted boxes



Refer to page 48 for standard box color program

### Two Piece Lock Corner Gift Boxes

| Stock #  | Size LxWxH  | Case Pack |
|----------|---|-----------|
| GB332    | 3 x 3 x 2   | 100       |
| GB443    | 4 x 4 x 3   | 100       |
| GB553    | 5 x 5 x 3   | 100       |
| GB644    | 6 x 4 x 4   | 100       |
| GB661    | 6 x 6 x 1 <sup>5/8</sup>                                | 100       |
| GB664    | 6 x 6 x 4   | 100       |
| GB666    | 6 x 6 x 6   | 100       |
| GB753*   | 7 x 5 x 3   | 100       |
| GB777    | 7 x 7 x 7   | 50        |
| GB882    | 8 x 8 x 2   | 100       |
| GB883    | 8 x 8 x 3 <sup>1/2</sup>                                | 100       |
| GB886    | 8 x 8 x 6   | 100       |
| GB921*   | 9 <sup>1/4</sup> x 2 <sup>1/4</sup> x 1 <sup>1/4</sup>  | 100       |
| GB944    | 9 x 4 <sup>1/2</sup> x 4 <sup>1/2</sup>                 | 100       |
| GB965    | 9 x 6 x 5   | 100       |
| GB992    | 9 x 9 x 2 <sup>3/4</sup>                                | 100       |
| GB995    | 9 x 9 x 5 <sup>1/2</sup>                                | 50        |
| GB999    | 9 x 9 x 9   | 50        |
| GB1055   | 10 x 5 x 5  | 100       |
| GB1072*  | 10 x 7 x 2 <sup>1/2</sup>                               | 100       |
| GB1081   | 10 x 8 x 1 <sup>1/4</sup>                               | 100       |
| GB1031*  | 10 <sup>1/2</sup> x 3 <sup>1/2</sup> x 1 <sup>3/4</sup> | 100       |
| GB10102  | 10 <sup>1/2</sup> x 10 <sup>1/2</sup> x 2               | 100       |
| GB10105  | 10 <sup>1/2</sup> x 10 <sup>1/2</sup> x 5               | 50        |
| GB10108  | 10 <sup>1/2</sup> x 10 <sup>1/2</sup> x 8               | 50        |
| GB1133   | 11 x 3 x 3  | 100       |
| GB11114  | 11 x 11 x 3 <sup>3/4</sup>                              | 50        |
| GB1254   | 12 x 5 x 4  | 100       |
| GB1262   | 12 x 6 x 2  | 100       |
| GB1266   | 12 x 6 x 6  | 50        |
| GB1291   | 12 x 9 x 1 <sup>5/8</sup>                               | 100       |
| GB12122  | 12 x 12 x 2   | 50        |
| GB12123  | 12 x 12 x 3   | 50        |
| GB12125  | 12 x 12 x 5 <sup>1/2</sup>                              | 50        |
| GB12128  | 12 x 12 x 8   | 50        |
| GB121212 | 12 x 12 x 12  | 25        |
| GB13113* | 13 x 11 x 3   | 50        |
| GB1444   | 14 x 4 x 4  | 100       |
| GB1474   | 14 x 7 x 4  | 100       |
| GB1486   | 14 x 8 x 6  | 50        |
| GB14142  | 14 x 14 x 2   | 50        |

### Two Piece Lock Corner Gift Boxes

| Stock #  | Size LxWxH                                | Case Pack |
|----------|---|-----------|
| GB14143  | 14 <sup>1/2</sup> x 14 <sup>1/2</sup> x 3 | 50        |
| GB14145  | 14 x 14 x 5                               | 50        |
| GB14147  | 14 x 14 x 7                               | 25        |
| GB14149  | 14 x 14 x 9                               | 25        |
| GB1576   | 15 x 7 x 6 <sup>1/2</sup>                 | 50        |
| GB15102  | 15 x 10 x 2                               | 100       |
| GB15114  | 15 x 11 x 4                               | 50        |
| GB15153  | 15 x 15 x 3                               | 50        |
| GB15156  | 15 x 15 x 6 <sup>1/2</sup>                | 25        |
| GB1683*  | 16 x 8 x 3                                | 100       |
| GB16163  | 16 x 16 x 3                               | 50        |
| GB1732*  | 17 x 3 <sup>1/2</sup> x 2 <sup>1/4</sup>  | 100       |
| GB1788   | 17 x 8 <sup>1/2</sup> x 8                 | 25        |
| GB17112  | 17 x 11 x 2 <sup>1/2</sup>                | 50        |
| GB1855   | 18 x 5 <sup>1/2</sup> x 5 <sup>1/4</sup>  | 50        |
| GB18182  | 18 x 18 x 2                               | 50        |
| GB18185  | 18 x 18 x 5                               | 25        |
| GB19123  | 19 x 12 x 3                               | 50        |
| GB19155* | 19 x 15 x 5                               | 25        |
| GB20142  | 20 x 14 x 2                               | 50        |
| GB20204  | 20 x 20 x 4 <sup>1/2</sup>                | 25        |
| GB24162  | 24 x 16 x 2 <sup>1/2</sup>                | 25        |
| GB24246  | 24 x 24 x 6                               | 25        |
| GB2576   | 25 x 7 x 6                                | 25        |
| GB25155  | 25 x 15 x 5                               | 25        |
| GB26112* | 26 x 11 x 2 <sup>1/2</sup>                | 25        |

### One Piece Folders

| Stock #  | Size LxWxH                              | Case Pack |
|----------|---|-----------|
| FL881*   | 8 <sup>1/2</sup> x 8 <sup>1/2</sup> x 1 | 100       |
| FL1041*  | 10 x 4 <sup>1/2</sup> x 1               | 100       |
| FL12121* | 12 x 12 x 1                             | 100       |
| FL2013*  | 20 x 13 <sup>3/4</sup> x 3/4            | 50        |

**Note:** Standard colored boxes are made to order with a minimum of 500 boxes, assorted sizes and 2 case minimum per size.

\*Select sizes require a 200 box minimum (GB753, GB921, GB1072, GB1031, GB13113, GB1683, GB1732, GB19155, GB26112, FL881, FL1041, FL12121, FL2013)



All boxes are manufactured with 100% recycled materials. Our natural kraft boxes contain 100% post-consumer fibers. All boxes are tinted using water based inks and are recyclable.

## Two Piece Lock Corner Gift Boxes - SWIRLS & DOTS DESIGNS

No need for gift wrap! Add a designer's touch to your boxes with our elegant swirls or trendy dots pattern perfect for any season. Choose from our selection of featured colors in silver, merlot, black, emerald, champagne, aqua, bright chartreuse, honeysuckle or choose your own unique color. Choose from our standard box colors or use your brand color at an upcharge. Add a hot stamp for a personal touch to create a trendy ensemble!



**Featured Colors available:** Silver Swirls, Merlot Swirls, Black Swirls, Emerald Swirls, Champagne Swirls, White Swirls, Silver Swirls on White

All boxes are available made to order with a minimum of 500 boxes assorted sizes and 2 case minimum per size.

Refer to page 50 and available sizes in the Swirls pattern with the exception of GB121212, GB14149 and GB24246.

Refer to page 48 for a list of standard box colors - call for details.



**Featured Colors available:** Silver Dots, Merlot Dots, Black Dots, Emerald Dots, Champagne Dots, Aqua Dots, Bright Chartreuse Dots and Honeysuckle Dots

All boxes are available made to order with a minimum of 500 boxes assorted sizes and 2 case minimum per size.

Refer to page 50 for available sizes in the Dots pattern with the exception of GB121212, GB14149 and GB24246.

Refer to page 48 for a list of standard box colors - call for details.

One case minimum for imprinted boxes



Refer to page 48 for standard box color program

All boxes are manufactured with 100% recycled materials. Our natural kraft boxes contain 100% post-consumer fibers. All boxes are tinted using water based inks and are recyclable.

## Two Piece Lock Corner Gift Boxes - METALLIC COLLECTION

Upscale your packaging presentation with our elegant metallic two piece lock corner gift boxes available in rich metallic colors of gold, silver and copper. Create a more upscale packaging ensemble with hot stamp or emboss printing and coordinating shoppers.



### Two Piece Lock Corner Gift Boxes - METALLIC COLLECTION

| Stock # | Size LxWxH                                | Case Pack |
|---------|---|-----------|
| GB443   | 4 x 4 x 3                                 | 100       |
| GB664   | 6 x 6 x 4                                 | 100       |
| GB777   | 7 x 7 x 7                                 | 50        |
| GB886   | 8 x 8 x 6                                 | 100       |
| GB995   | 9 x 9 x 5 <sup>1/2</sup>                  | 50        |
| GB10105 | 10 <sup>1/2</sup> x 10 <sup>1/2</sup> x 5 | 50        |
| GB1266  | 12 x 6 x 6                                | 50        |
| GB12125 | 12 x 12 x 5 <sup>1/2</sup>                | 50        |
| GB15156 | 15 x 15 x 6 <sup>1/2</sup>                | 25        |
| GB18185 | 18 x 18 x 5                               | 25        |



**In Stock Colors available:** Special Gold, Special Silver

**Additional Colors (made to order):** Special Copper

**Note:** Special Copper Boxes available made to order with a minimum of 500 boxes assorted sizes and 2 case minimum per size.

Additional sizes available in Metallic Collection as made to order boxes with a 2500 box minimum, assorted sizes - call for a quote.

{ trend tip:  
add a contrasting  
colored interior }



One case minimum for imprinted boxes



Refer to page 48 for standard box color program

All boxes are manufactured with 100% recycled materials. Our natural kraft boxes contain 100% post-consumer fibers. All boxes are tinted using water based inks and are recyclable.

## One Piece Gift Boxes – WHITE AND NATURAL KRAFT

Made of recycled board for the environmentally conscious consumer, our many in-stock sizes of white gloss and natural kraft one piece boxes make gift packaging easier than ever. Boxes ship flat for easy storage.



### One Piece Gift Boxes - ECO WHITE

| Stock #   | Size LxWxH   | Case Pack |
|-----------|--|-----------|
| PX222     | 2 x 2 x 2  | 100       |
| PX332     | 3 x 3 x 2  | 100       |
| PX333     | 3 x 3 x 3  | 100       |
| PX424     | 4 x 2 <sup>3/4</sup> x 4                                 | 100       |
| PX442     | 4 x 4 x 2  | 100       |
| PX425     | 4 <sup>3/4</sup> x 2 <sup>3/4</sup> x 5 <sup>3/4</sup>   | 100       |
| PX444     | 4 x 4 x 4  | 100       |
| PX444W    | 4 x 4 x 4  | 100       |
| PX446     | 4 x 4 x 5 <sup>1/2</sup>                                 | 100       |
| PX447     | 4 x 4 x 7  | 100       |
| PX554     | 5 x 5 x 4  | 100       |
| PX637**   | 6 <sup>1/4</sup> x 3 <sup>3/4</sup> x 7 <sup>1/4</sup>   | 100       |
| PX644     | 6 x 4 <sup>1/2</sup> x 4 <sup>1/2</sup>                  | 100       |
| PX661*    | 6 <sup>1/2</sup> x 6 <sup>1/2</sup> x 1 <sup>5/8</sup>   | 100       |
| PX664     | 6 x 6 x 4  | 100       |
| PX666     | 6 x 6 x 6  | 100       |
| PX743     | 7 x 4 x 3  | 100       |
| PX743VOT• | 7 x 4 x 3  | 100       |
| PX777     | 7 x 7 x 7  | 100       |
| PX882*    | 8 <sup>1/2</sup> x 8 <sup>1/2</sup> x 2                  | 100       |
| PX883     | 8 <sup>1/2</sup> x 8 <sup>1/2</sup> x 2 <sup>1/4</sup>   | 100       |
| PXVOTIVE• | 8 <sup>1/2</sup> x 8 <sup>1/2</sup> x 2 <sup>1/4</sup>   | 50        |
| PX884     | 8 x 8 x 4  | 100       |
| PX886     | 8 x 8 x 6  | 100       |
| PX944     | 9 x 4 <sup>1/2</sup> x 4 <sup>1/2</sup>                  | 100       |
| PX996     | 9 x 9 x 5 <sup>1/2</sup>                                 | 50        |
| PX999     | 9 x 9 x 9  | 50        |
| PX1044    | 10 x 4 <sup>1/2</sup> x 4 <sup>1/2</sup>                 | 100       |
| PX10102*  | 10 <sup>1/2</sup> x 10 <sup>1/2</sup> x 2 <sup>1/2</sup> | 50        |
| PX10105   | 10 x 10 x 5  | 50        |
| PX1088    | 10 x 8 x 8   | 50        |
| PX11114   | 11 x 11 x 3 <sup>1/4</sup>                               | 50        |
| PX1233    | 12 x 3 x 3   | 100       |
| PX1256    | 12 x 5 <sup>1/2</sup> x 6                                | 50        |
| PX12123*  | 12 x 12 x 3  | 50        |
| PX12125*  | 12 x 12 x 5  | 50        |
| PX1466    | 14 x 6 x 6   | 50        |
| PX1486    | 14 x 7 <sup>1/2</sup> x 5 <sup>1/2</sup>                 | 50        |
| PX14145*  | 14 x 14 x 5  | 50        |
| PX1577    | 15 x 7 x 7   | 50        |

\*Denotes two piece pop-up style box.

PX444, PX444W, PX644, PX664, PX944 and PX884 are available in auto-bottom style and not tuck-it bottom style

\*\*PX637 made with heavy weight board. This is a made to order box only.

•PX743VOT includes insert to hold 6 votive candles. This is a made to order box only.

•PXVOTIVE includes insert to hold 12 votive candles. This is a made to order box only.

Note: PX424, PX425, PX446, PX637, PX11114, PX743VOT and PXVOTIVE box sizes are made to order with a 200 box minimum. Allow 3-4 weeks delivery.

One case minimum for imprinted boxes



### One Piece Gift Boxes - ECO NAT

| Stock #   | Size LxWxH   | Case Pack |
|-----------|--|-----------|
| PX222     | 2 x 2 x 2  | 100       |
| PX332     | 3 x 3 x 2  | 100       |
| PX333     | 3 x 3 x 3  | 100       |
| PX424     | 4 x 2 <sup>3/4</sup> x 4                                 | 100       |
| PX442     | 4 x 4 x 2  | 100       |
| PX425     | 4 <sup>3/4</sup> x 2 <sup>3/4</sup> x 5 <sup>3/4</sup>   | 100       |
| PX444     | 4 x 4 x 4  | 100       |
| PX446     | 4 x 4 x 5 <sup>1/2</sup>                                 | 100       |
| PX447     | 4 x 4 x 7  | 100       |
| PX554     | 5 x 5 x 4  | 100       |
| PX637**   | 6 <sup>1/4</sup> x 3 <sup>3/4</sup> x 7 <sup>1/4</sup>   | 100       |
| PX644     | 6 x 4 <sup>1/2</sup> x 4 <sup>1/2</sup>                  | 100       |
| PX661*    | 6 <sup>1/2</sup> x 6 <sup>1/2</sup> x 1 <sup>5/8</sup>   | 100       |
| PX664     | 6 x 6 x 4  | 100       |
| PX666     | 6 x 6 x 6  | 100       |
| PX743     | 7 x 4 x 3  | 100       |
| PX743VOT• | 7 x 4 x 3  | 100       |
| PX777     | 7 x 7 x 7  | 100       |
| PX882*    | 8 <sup>1/2</sup> x 8 <sup>1/2</sup> x 2                  | 100       |
| PX883     | 8 <sup>1/2</sup> x 8 <sup>1/2</sup> x 2 <sup>1/4</sup>   | 100       |
| PXVOTIVE• | 8 <sup>1/2</sup> x 8 <sup>1/2</sup> x 2 <sup>1/4</sup>   | 50        |
| PX884     | 8 x 8 x 4  | 100       |
| PX886     | 8 x 8 x 6  | 100       |
| PX944     | 9 x 4 <sup>1/2</sup> x 4 <sup>1/2</sup>                  | 100       |
| PX996     | 9 x 9 x 5 <sup>1/2</sup>                                 | 50        |
| PX999     | 9 x 9 x 9  | 50        |
| PX1044    | 10 x 4 <sup>1/2</sup> x 4 <sup>1/2</sup>                 | 100       |
| PX10102*  | 10 <sup>1/2</sup> x 10 <sup>1/2</sup> x 2 <sup>1/2</sup> | 50        |
| PX10105   | 10 x 10 x 5  | 50        |
| PX1088    | 10 x 8 x 8   | 50        |
| PX11114   | 11 x 11 x 3 <sup>1/4</sup>                               | 50        |
| PX1233    | 12 x 3 x 3   | 100       |
| PX1256    | 12 x 5 <sup>1/2</sup> x 6                                | 50        |
| PX12123*  | 12 x 12 x 3  | 50        |
| PX12125*  | 12 x 12 x 5  | 50        |
| PX1466    | 14 x 6 x 6   | 50        |
| PX1486    | 14 x 7 <sup>1/2</sup> x 5 <sup>1/2</sup>                 | 50        |
| PX14145*  | 14 x 14 x 5  | 50        |
| PX1577    | 15 x 7 x 7   | 50        |



All boxes are manufactured with 100% recycled materials. Our natural kraft boxes contain 100% post-consumer fibers. All boxes are tinted using water based inks and are recyclable.

## One Piece Gift Boxes – Colors

We make our boxes in beautiful colors to match our paper shopping bags and with an expansive selection of standard colors and sizes to choose from, coordinated gift packaging has never been easier. Select colors available in stock or made to order in any of our standard box colors.

### MATTE COLORS ON KRAFT

| Stock #  | Size LxWxH                               | Case Pack |
|----------|--|-----------|
| PX332**  | 3 x 3 x 2                                | 100       |
| PX444    | 4 x 4 x 4                                | 100       |
| PX644    | 6 x 4 <sup>1/2</sup> x 4 <sup>1/2</sup>  | 100       |
| PX664    | 6 x 6 x 4                                | 100       |
| PX777**  | 7 x 7 x 7                                | 100       |
| PX884    | 8 x 8 x 4                                | 100       |
| PX996**  | 9 x 9 x 5 <sup>1/2</sup>                 | 50        |
| PX1044   | 10 x 4 <sup>1/2</sup> x 4 <sup>1/2</sup> | 100       |
| PX1256   | 12 x 5 <sup>1/2</sup> x 6                | 50        |
| PX12123* | 12 x 12 x 3                              | 50        |
| PX12125* | 12 x 12 x 5 <sup>1/2</sup>               | 50        |
| PX1466   | 14 x 6 x 6                               | 50        |

\*Denotes two piece pop-up style box.

**In Stock Matte Colors on Kraft available:** Black, Burgundy, Chocolate, Dark Green, Navy, Purple, Sand, Teal

**Additional Matte Colors on Kraft (made to order):** Celery, Cerise, Gray, Olive, Rainforest Green, Red, Southwest Orange, Slate Gray, Shimmer Amethyst, Shimmer Avocado, Shimmer Honeysuckle, Shimmer Raspberry, Shimmer Turquoise, Storm Grey, Blue Gingham, Burgundy Gingham, Green Gingham, Red Gingham

**Note:** Made to order box colors available with a 500 box minimum, assorted sizes (sizes as listed) and 2 case minimum per size.

**Note:** Textured Groove Boxes are available made to order with a 500 box minimum, assorted sizes and with a 200 box minimum per size - call for details.

### GLOSS/MATTE COLORS ON WHITE

| Stock #  | Size LxWxH                               | Case Pack |
|----------|--|-----------|
| PX332**  | 3 x 3 x 2                                | 100       |
| PX444    | 4 x 4 x 4                                | 100       |
| PX644    | 6 x 4 <sup>1/2</sup> x 4 <sup>1/2</sup>  | 100       |
| PX664    | 6 x 6 x 4                                | 100       |
| PX777**  | 7 x 7 x 7                                | 100       |
| PX884    | 8 x 8 x 4                                | 100       |
| PX996**  | 9 x 9 x 5 <sup>1/2</sup>                 | 50        |
| PX1044   | 10 x 4 <sup>1/2</sup> x 4 <sup>1/2</sup> | 100       |
| PX1256   | 12 x 5 <sup>1/2</sup> x 6                | 50        |
| PX12123* | 12 x 12 x 3                              | 50        |
| PX12125* | 12 x 12 x 5 <sup>1/2</sup>               | 50        |
| PX1466   | 14 x 6 x 6                               | 50        |

\*Denotes two piece pop-up style box.

**In Stock Gloss Colors on White available:** Black, Burgundy, Dartmouth Green, Ivory, Metallic Bronze Platinum, Metallic Sage, Red, Silver

**Additional Gloss/Matte Colors on White (made to order):** Aqua, Bright Chartreuse, Cerise, Emerald, Lavender, Lemon, Matte Aloe Green, Matte Aqua, Matte Aqua Marine, Matte Burnt Orange, Matte Chartreuse, Matte Coco Brown, Matte Coral Chiffon, Matte Cream, Matte Ivory, Matte Khaki, Matte Lime Green, Matte Pastel Yellow, Matte Pearl Cream, Matte Pink, Matte Powder Blue, *Near!* Matte Sand, Matte Silver, Matte Tarnished Grey, Matte Turquoise, Merlot, Metallic Blue, Metallic Champagne, Mocha, Navy, Peach, Pearlized Cream, Pink, *Near!* Rose Gold, Sapphire, Shimmer Avocado, Shimmer Amethyst, Shimmer Honeysuckle, Shimmer Raspberry, Shimmer Turquoise, Slate Grey, *Near!* Stone White, Tangerine, Tuscany

**Note:** Made to order box colors available with a 500 box minimum assorted sizes (sizes as listed) and 2 case minimum per size.

**Note:** Textured Groove Boxes are available made to order with a 500 box minimum, assorted sizes and with a 200 box minimum per size - call for details.

PX444, PX644, PX664, and PX884 are available in auto-bottom style and not tuck-it bottom style

\*\*Note: PX332, PX777 and PX996 box sizes are made to order with a 200 box minimum.

Allow 3-4 weeks for delivery. Limited stock in select colors - call for color availability.



### METALLIC COLORS ON KRAFT

| Stock #  | Size LxWxH                               | Case Pack |
|----------|--|-----------|
| PX332**  | 3 x 3 x 2                                | 100       |
| PX444    | 4 x 4 x 4                                | 100       |
| PX644    | 6 x 4 <sup>1/2</sup> x 4 <sup>1/2</sup>  | 100       |
| PX664    | 6 x 6 x 4                                | 100       |
| PX777**  | 7 x 7 x 7                                | 100       |
| PX884    | 8 x 8 x 4                                | 100       |
| PX996**  | 9 x 9 x 5 <sup>1/2</sup>                 | 50        |
| PX1044   | 10 x 4 <sup>1/2</sup> x 4 <sup>1/2</sup> | 100       |
| PX1256   | 12 x 5 <sup>1/2</sup> x 6                | 50        |
| PX12123* | 12 x 12 x 3                              | 50        |
| PX12125* | 12 x 12 x 5 <sup>1/2</sup>               | 50        |
| PX1466   | 14 x 6 x 6                               | 50        |

\*Denotes two piece pop-up style box.

**In Stock Metallic Colors on Kraft available:** Copper, Gold, Sage, Silver

**Additional Metallic Colors on Kraft (made to order):** Blue

**Note:** Made to order box colors available with a 500 box minimum, assorted sizes (sizes as listed) and 2 case minimum per size.

**Note:** Textured Groove Boxes are available made to order with a 500 box minimum, assorted sizes and with a 200 box minimum per size. Call For Details

One case minimum for imprinted boxes



Refer to page 62 for standard box color program



All boxes are manufactured with 100% recycled materials. Our natural kraft boxes contain 100% post-consumer fibers. All boxes are tinted using water based inks and are recyclable

## Two Piece Lock Corner Gift Box Assortments

Two piece gift box assortments are perfect for a new business. We carry white and natural kraft box assortments in-stock and colored box assortments are available made to order.



## Flower Boxes

Who doesn't love to receive flowers? Our floral boxes can be easily imprinted to include your business name or logo, making them the perfect advertisement. Complete your look by choosing a coordinating color of floral dry waxed tissue.



### Floral Boxes - WHITE & NATURAL KRAFT

| Stock # | Size LxWxH                | Case Pack |
|---------|---------------------------|-----------|
| PX954   | 9 x 5 x 4                 | 100       |
| GB2453  | 24 x 5 x 3 <sup>1/2</sup> | 50        |
| GB3064  | 30 x 6 x 4                | 50        |

One case minimum for imprinted boxes



### Floral Boxes - COLORS

| Stock # | Size LxWxH                | Case Pack |
|---------|---------------------------|-----------|
| PX954   | 9 x 5 x 4                 | 100       |
| GB2453  | 24 x 5 x 3 <sup>1/2</sup> | 50        |
| GB3064  | 30 x 6 x 4                | 50        |

PX954 is a one piece gift box

GB2453 and GB3064 are two piece lock corner gift boxes

Standard box colors are available made to order with a 500 box minimum, assorted sizes and 2 case minimum per size.



All boxes are manufactured with 100% recycled materials. Our natural kraft boxes contain 100% post-consumer fibers. All boxes are tinted using water based inks and are recyclable.

## Two Piece Lock Corner Gift Boxes - SMALL ASSORTMENT

| Stock #            | Size LxWxH                                | Quantity   |
|--------------------|---|------------|
| GBAST10            | 5 x 5 x 3                                 | 50         |
|                    | 6 x 6 x 4                                 | 50         |
|                    | 8 x 8 x 3 <sup>1/2</sup>                  | 50         |
|                    | 9 x 9 x 5 <sup>1/2</sup>                  | 50         |
|                    | 10 <sup>1/2</sup> x 10 <sup>1/2</sup> x 2 | 50         |
|                    | 12 x 6 x 6                                | 50         |
|                    | 12 x 12 x 5 <sup>1/2</sup>                | 25         |
| <b>TOTAL BOXES</b> |   | <b>325</b> |

White or Natural Kraft

## Two Piece Lock Corner Gift Boxes - LARGE ASSORTMENT

| Stock # | Size LxWxH                                | Quantity |
|---------|---|----------|
| GBAST20 | 5 x 5 x 3                                 | 50       |
|         | 6 x 4 x 4                                 | 50       |
|         | 6 x 6 x 4                                 | 50       |
|         | 8 x 8 x 2                                 | 50       |
|         | 8 x 8 x 3 <sup>1/2</sup>                  | 50       |
|         | 8 x 8 x 6                                 | 50       |
|         | 9 x 4 <sup>1/2</sup> x 4 <sup>1/2</sup>   | 50       |
|         | 9 x 9 x 5 <sup>1/2</sup>                  | 50       |
|         | 10 <sup>1/2</sup> x 10 <sup>1/2</sup> x 2 | 50       |
|         | 11 x 11 x 3 <sup>3/4</sup>                | 50       |
|         | 12 x 6 x 6                                | 50       |
|         | 12 x 12 x 5 <sup>1/2</sup>                | 25       |
|         | 15 x 15 x 6 <sup>1/2</sup>                | 25       |
|         | <b>TOTAL BOXES</b>                        |          |

White or Natural Kraft





## One Piece Heavy Weight - WHITE GLOSS AND NATURAL KRAFT

For fragile items or when you need extra stability, we offer many sizes in our heavy weight white gloss one piece boxes. Made of a heavier paper board, these boxes will give you the added protection you require.

### Heavy Weight One Piece Gift Boxes - WHITE GLOSS AND NATURAL KRAFT

| Stock #     | Size LxWxH                               | Case Pack |
|-------------|--|-----------|
| PX332       | 3 x 3 x 2                                | 100       |
| PX333**     | 3 x 3 x 3                                | 100       |
| PX442       | 4 x 4 x 2                                | 100       |
| PX444       | 4 x 4 x 4                                | 100       |
| PX447       | 4 x 4 x 7                                | 100       |
| PX554       | 5 x 5 x 4                                | 100       |
| PX644       | 6 x 4 <sup>1/2</sup> x 4 <sup>1/2</sup>  | 100       |
| PX664       | 6 x 6 x 4                                | 100       |
| PX666       | 6 x 6 x 6                                | 100       |
| PX777       | 7 x 7 x 7                                | 100       |
| PX882* **   | 8 <sup>1/2</sup> x 8 <sup>1/2</sup> x 2  | 100       |
| PX884       | 8 x 8 x 4                                | 100       |
| PX944**     | 9 x 4 <sup>1/2</sup> x 4 <sup>1/2</sup>  | 100       |
| PX996**     | 9 x 9 x 5 <sup>1/2</sup>                 | 50        |
| PX999**     | 9 x 9 x 9                                | 50        |
| PX1044      | 10 x 4 <sup>1/2</sup> x 4 <sup>1/2</sup> | 100       |
| PX1088      | 10 x 8 x 8                               | 50        |
| PX1233**    | 12 x 3 x 3                               | 100       |
| PX1256      | 12 x 5 <sup>1/2</sup> x 6                | 50        |
| PX12123* ** | 12 x 12 x 3                              | 50        |
| PX12126* ** | 12 x 12 x 6                              | 25        |
| PX12129**   | 12 x 12 x 9                              | 50        |
| PX1466      | 14 x 6 x 6                               | 50        |
| PX1577**    | 15 x 7 x 7                               | 50        |

\*Denotes two piece pop-up style.

\*\*Not available in Natural Kraft.

PX444, PX644, PX664, PX884 and PX944 - available in auto-bottom style and not tuck-it bottom style.

Note: White Gloss in PX332, PX777, PX882, PX884, PX996, PX999, PX1044, PX1088, PX1256, PX12123, PX12126, PX1466 box sizes are made to order with a 200 box minimum.

Note: Natural Kraft in PX1088 box size is made to order with a 200 box minimum.

## One Piece Gift Box Assortment – WHITE AND NATURAL KRAFT

Whether you are just starting out or need a mix of box sizes, but not large quantities – our one piece gift box assortments are a perfect choice.

### One Piece Gift Box Assortment - ECO WHITE AND ECO NAT

| Stock #            | Size LxWxH                              | Quantity |
|--------------------|---|----------|
| <b>PXASST</b>      | 3 x 3 x 3                               | 25       |
|                    | 4 x 4 x 4                               | 25       |
|                    | 6 x 4 <sup>1/2</sup> x 4 <sup>1/2</sup> | 25       |
|                    | 6 x 6 x 4                               | 25       |
|                    | 6 x 6 x 6                               | 25       |
|                    | 8 x 8 x 4                               | 10       |
|                    | 9 x 4 <sup>1/2</sup> x 4 <sup>1/2</sup> | 25       |
|                    | 10 x 10 x 5                             | 15       |
|                    | 12 x 3 x 3                              | 5        |
|                    | 12 x 5 <sup>1/2</sup> x 6               | 10       |
|                    | 12 x 12 x 3                             | 5        |
|                    | 12 x 12 x 5 <sup>1/2</sup>              | 5        |
| <b>TOTAL BOXES</b> |   | 200      |

One case minimum for imprinted boxes



All boxes are manufactured with 100% recycled materials. Our natural kraft boxes contain 100% post-consumer fibers. All boxes are tinted using water based inks and are recyclable.

## Premier Line Boxes - RIGID SET UP

Upscale your presentation with our premier rigid set-up style gift boxes! Boxes are available in 4 of our most popular gift box sizes - 4", 6", 10" and 12" sizes. Each box can be nested into the next box size up. Boxes are constructed using heavy weight board and have a matte laminated finish. Each box is pre-assembled and individually poly wrapped. Box colors include luxurious gold and silver, and basic black and white and can be paired with our luxurious matte laminated european shoppers for an upscale look. Personalize with a beautiful hot stamp or a vibrant four color process print!



### Premier Line Gift Boxes - RIGID SET UP

| Stock #   | Size LxWxH                         | Case Pack |
|-----------|------------------------------------|-----------|
| ABRS444   | 4 x 4 x 4 + 1 <sup>1/2</sup> Lid   | 20        |
| ABRS664   | 6 x 6 x 4 + 1 <sup>1/2</sup> Lid   | 16        |
| ABRS10105 | 10 x 10 x 5 + 1 <sup>1/2</sup> Lid | 8         |
| ABRS12126 | 12 x 12 x 6 + 1 <sup>1/2</sup> Lid | 8         |



In-Stock Matte Colors available: Black, Gold, Silver, White  
 4 color process printing available - call for a quote  
 No ink printing available

One case minimum for imprinted boxes



{ mix&match:  
 coco brown &  
 pearl cream  
 collection }



# BOXES | Premier Line Boxes

## Premier Line Boxes - WHITE GLOSS

Our premier line of boxes are truly the very best in gift packaging. With the elegant look of their folding set-up lid and their sturdy matching base, these boxes will leave a lasting impression of genuine quality. Premier line boxes are available in a number of different sizes with lids and bases sold separately to allow you many packaging options. Choose from white gloss available in stock or combine with a colored lid or base. Colored lids and bases available with an added upcharge and applicable minimums. Boxes ship flat for easy storage.



### Premier Line Gift Boxes - WHITE GLOSS

| Stock #   | Size LxWxH   | Case Pack |
|-----------|--|-----------|
| ABFS442   | 4 <sup>1/2</sup> x 4 <sup>1/2</sup> x 1 <sup>1/2</sup> Lid   | 100       |
| PXB444    | 4 <sup>1/2</sup> x 4 <sup>1/2</sup> x 4 Base                 | 100       |
| PXB446    | 4 <sup>1/2</sup> x 4 <sup>1/2</sup> x 6 Base                 | 100       |
| PXB449    | 4 <sup>1/2</sup> x 4 <sup>1/2</sup> x 9 Base                 | 100       |
| ABFS642   | 6 x 4 <sup>1/2</sup> x 2 Lid                                 | 100       |
| PXB644    | 6 x 4 <sup>1/2</sup> x 4 <sup>1/2</sup> Base                 | 100       |
| ABFS662   | 6 x 6 x 2 Lid  | 100       |
| PXB664    | 6 x 6 x 4 Base   | 100       |
| PXB666    | 6 x 6 x 6 Base   | 100       |
| PXB669    | 6 x 6 x 9 Base   | 50        |
| ABFS882   | 8 x 8 x 2 Lid  | 100       |
| PXB884    | 8 x 8 x 4 Base   | 50        |
| PXB886    | 8 x 8 x 6 Base   | 50        |
| PXB889    | 8 x 8 x 9 Base   | 50        |
| ABFS942   | 9 x 4 <sup>1/2</sup> x 2 Lid                                 | 100       |
| GBB944    | 9 x 4 <sup>1/2</sup> x 4 <sup>1/2</sup> Base                 | 100       |
| ABFS992   | 9 x 9 x 1 <sup>3/4</sup> Lid                                 | 100       |
| GBB995    | 9 x 9 x 5 Base   | 50        |
| GBB999    | 9 x 9 x 9 Base   | 50        |
| ABFS10102 | 10 <sup>1/2</sup> x 10 <sup>1/2</sup> x 2 <sup>1/2</sup> Lid | 100       |
| GBB10105  | 10 <sup>1/2</sup> x 10 <sup>1/2</sup> x 5 Base               | 50        |
| GBB10108  | 10 <sup>1/2</sup> x 10 <sup>1/2</sup> x 8 Base               | 50        |
| ABFS11112 | 11 x 11 x 2 Lid  | 50        |
| GBB11114  | 11 x 11 x 3 <sup>3/4</sup> Base                              | 50        |
| GBB11119  | 11 x 11 x 9 Base   | 50        |
| ABFS1262  | 12 x 6 x 2 Lid   | 50        |
| GBB1266   | 12 x 6 x 6 Base  | 50        |
| ABFS12121 | 12 x 12 x 1 <sup>1/2</sup> Lid                               | 50        |
| GBB12122  | 12 x 12 x 2 Base   | 50        |

### Premier Line Gift Boxes - WHITE GLOSS

| Stock #    | Size LxWxH                                    | Case Pack |
|------------|---|-----------|
| ABFS12122  | 12 x 12 x 2 <sup>3/4</sup> Lid                | 50        |
| GBB12125   | 12 x 12 x 5 <sup>1/2</sup> Base               | 50        |
| GBB12128   | 12 x 12 x 8 Base                              | 50        |
| GBB121212  | 12 x 12 x 12 Base                             | 50        |
| ABFS14141  | 14 x 14 x 1 <sup>1/2</sup> Lid                | 50        |
| ABFS14142  | 14 x 14 x 2 <sup>3/4</sup> Lid                | 50        |
| GBB14142   | 14 x 14 x 2 Base                              | 50        |
| GBB14145   | 14 x 14 x 5 Base                              | 50        |
| GBB14147   | 14 x 14 x 7 Base                              | 50        |
| GBB14149   | 14 x 14 x 9 Base                              | 50        |
| ABFS15152  | 15 x 15 x 2 <sup>3/4</sup> Lid                | 50        |
| GBB15153   | 15 x 15 x 3 Base                              | 50        |
| GBB15156   | 15 x 15 x 6 Base                              | 50        |
| ABFS1572   | 15 x 7 x 2 <sup>3/4</sup> Lid                 | 50        |
| GBB1576    | 15 x 7 x 6 Base                               | 50        |
| ABFS1782   | 17 x 8 <sup>1/2</sup> x 2 <sup>3/4</sup> Lid  | 50        |
| GBB1788    | 17 x 8 <sup>1/2</sup> x 8 Base                | 50        |
| ABFS1852*  | 18 x 5 <sup>1/2</sup> x 2 <sup>3/4</sup> Lid  | 50        |
| GBB1855    | 18 x 5 <sup>1/2</sup> x 5 <sup>1/4</sup> Base | 50        |
| ABFS18182* | 18 x 18 x 2 <sup>3/4</sup> Lid                | 50        |
| GBB18185   | 18 x 18 x 5 Base                              | 50        |

\*ABFS1852 and ABFS18182 are made to order boxes with a 200 box minimum.


Note: Premier Line Boxes are available in-stock in White Gloss

PXB denotes a tuck-it style base

GBB denotes a lock corner style base

One case minimum for imprinted boxes



 All boxes are manufactured with 100% recycled materials. Our natural kraft boxes contain 100% post-consumer fibers. All boxes are tinted using water based inks and are recyclable.

## Premier Line Boxes - COLORS

Create a customized coordinated program with our upscale premier line colored gift boxes. Premier line boxes are available in a number of different sizes with the lids and bases sold separately to allow you many packaging options. The following pricing is for made to order boxes in either standard or custom colors. The minimum is 2500 pieces assorted sizes, 200 per size. You can order 1250 boxes with matching lids and bases or 2500 lids in one color and pair it with a stock white base.



### Premier Line Gift Boxes - COLORS

| Stock #   | Size LxWxH   | Case Pack |
|-----------|--|-----------|
| ABFS442   | 4 <sup>1/2</sup> x 4 <sup>1/2</sup> x 1 <sup>1/2</sup> Lid   | 100       |
| PXB444    | 4 <sup>1/2</sup> x 4 <sup>1/2</sup> x 4 Base                 | 100       |
| PXB446    | 4 <sup>1/2</sup> x 4 <sup>1/2</sup> x 6 Base                 | 100       |
| PXB449    | 4 <sup>1/2</sup> x 4 <sup>1/2</sup> x 9 Base                 | 100       |
| ABFS642   | 6 x 4 <sup>1/2</sup> x 2 Lid                                 | 100       |
| PXB644    | 6 x 4 <sup>1/2</sup> x 4 <sup>1/2</sup> Base                 | 100       |
| ABFS662   | 6 x 6 x 2 Lid  | 100       |
| PXB664    | 6 x 6 x 4 Base   | 100       |
| PXB666    | 6 x 6 x 6 Base   | 100       |
| PXB669    | 6 x 6 x 9 Base   | 50        |
| ABFS882   | 8 x 8 x 2 Lid  | 100       |
| PXB884    | 8 x 8 x 4 Base   | 50        |
| PXB886    | 8 x 8 x 6 Base   | 50        |
| PXB889    | 8 x 8 x 9 Base   | 50        |
| ABFS942   | 9 x 4 <sup>1/2</sup> x 2 Lid                                 | 100       |
| GBB944    | 9 x 4 <sup>1/2</sup> x 4 <sup>1/2</sup> Base                 | 100       |
| ABFS10102 | 10 <sup>1/2</sup> x 10 <sup>1/2</sup> x 2 <sup>1/2</sup> Lid | 100       |
| GBB10105  | 10 <sup>1/2</sup> x 10 <sup>1/2</sup> x 5 Base               | 50        |
| GBB10108  | 10 <sup>1/2</sup> x 10 <sup>1/2</sup> x 8 Base               | 50        |
| ABFS11112 | 11 x 11 x 2 Lid  | 50        |
| GBB11114  | 11 x 11 x 3 <sup>3/4</sup> Base                              | 50        |
| GBB11119  | 11 x 11 x 9 Base   | 50        |
| ABFS1262  | 12 x 6 x 2 Lid   | 50        |
| GBB1266   | 12 x 6 x 6 Base  | 50        |
| ABFS12121 | 12 x 12 x 1 <sup>1/2</sup> Lid                               | 50        |
| GBB12122  | 12 x 12 x 2 Base   | 50        |

### Premier Line Gift Boxes - COLORS

| Stock #   | Size LxWxH                                   | Case Pack |
|-----------|--|-----------|
| ABFS12122 | 12 x 12 x 2 <sup>3/4</sup> Lid               | 50        |
| GBB12125  | 12 x 12 x 5 <sup>1/2</sup> Base              | 50        |
| GBB12128  | 12 x 12 x 8 Base                             | 50        |
| GBB121212 | 12 x 12 x 12 Base                            | 50        |
| ABFS14141 | 14 x 14 x 1 <sup>1/2</sup> Lid               | 50        |
| ABFS14142 | 14 x 14 x 2 <sup>3/4</sup> Lid               | 50        |
| GBB14142  | 14 x 14 x 2 Base                             | 50        |
| GBB14145  | 14 x 14 x 5 Base                             | 50        |
| GBB14147  | 14 x 14 x 7 Base                             | 50        |
| GBB14149  | 14 x 14 x 9 Base                             | 50        |
| ABFS15152 | 15 x 15 x 2 <sup>3/4</sup> Lid               | 50        |
| GBB15153  | 15 x 15 x 3 Base                             | 50        |
| GBB15156  | 15 x 15 x 6 Base                             | 50        |
| ABFS1572  | 15 x 7 x 2 <sup>3/4</sup> Lid                | 50        |
| GBB1576   | 15 x 7 x 6 Base                              | 50        |
| ABFS1782  | 17 x 8 <sup>1/2</sup> x 2 <sup>3/4</sup> Lid | 50        |
| GBB1788   | 17 x 8 <sup>1/2</sup> x 8 Base               | 50        |

PXB denotes a tuck-it style base  
GBB denotes a lock corner style base

Standard and custom colors are available made to order with a 1250 box or 2500 piece minimum, assorted sizes and with a 200 box minimum per size.

One case minimum for imprinted boxes



Refer to page 48 for standard box color program

{ customized premier line style gift boxes }



All boxes are manufactured with 100% recycled materials. Our natural kraft boxes contain 100% post-consumer fibers. All boxes are tinted using water based inks and are recyclable.

## Premier Line Boxes – POLKA DOTS AND STRIPES COLLECTION

Polka dots and stripes are fun and hip. Add a splash of creativity to your packaging with these trendy gift boxes. Lids and bases are sold separately, allowing you to mix and match solids, dots and stripes. Coordinate with our paper or european shopping bags, hot stamp with your logo and you will create a fanciful look all your own.



### Premier Line Gift Boxes - POLKA DOTS & STRIPES

| Stock #   | Size LxWxH   | Case Pack |
|-----------|--|-----------|
| ABFS442   | 4 <sup>1/2</sup> x 4 <sup>1/2</sup> x 1 <sup>1/2</sup> Lid   | 100       |
| GBB444    | 4 <sup>1/2</sup> x 4 <sup>1/2</sup> x 4 Base                 | 100       |
| ABFS662   | 6 x 6 x 2 Lid  | 100       |
| GBB664    | 6 x 6 x 4 Base   | 100       |
| ABFS882   | 8 x 8 x 2 Lid  | 100       |
| GBB886    | 8 x 8 x 6 Base   | 50        |
| ABFS10102 | 10 <sup>1/2</sup> x 10 <sup>1/2</sup> x 2 <sup>1/2</sup> Lid | 100       |
| GBB10105  | 10 <sup>1/2</sup> x 10 <sup>1/2</sup> x 5 Base               | 50        |
| ABFS1262  | 12 x 6 x 2 Lid   | 50        |
| GBB1266   | 12 x 6 x 6 Base  | 50        |
| ABFS12122 | 12 x 12 x 2 <sup>3/4</sup> Lid                               | 50        |
| GBB12125  | 12 x 12 x 5 <sup>1/2</sup> Base                              | 50        |
| ABFS15152 | 15 x 15 x 2 <sup>3/4</sup> Lid                               | 50        |
| GBB15156  | 15 x 15 x 6 Base   | 50        |



One case minimum for imprinted boxes



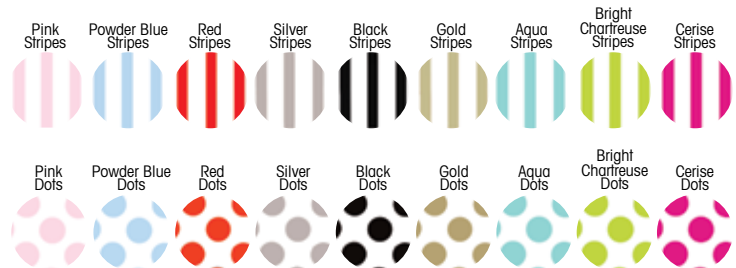
All boxes are manufactured with 100% recycled materials. Our natural kraft boxes contain 100% post-consumer fibers. All boxes are tinted using water based inks and are recyclable.

### Folding Set-Up Apparel Boxes

Polka dots and stripes apparel boxes feature a short lid over a deep base, giving you the look of a rigid apparel box. Boxes ship flat for easy storage.

### Premier Line Apparel Boxes - POLKA DOTS & STRIPES

| Stock #   | Size LxWxH                               | Case Pack |
|-----------|--|-----------|
| ABFS1592  | 15 x 9 <sup>1/2</sup> x 2 <sup>1/4</sup> | 100       |
| ABFS17113 | 17 x 11 x 3                              | 50        |
| ABFS19123 | 19 x 12 x 3                              | 50        |



Colors available (one case order minimum): Pink, Powder Blue, Red, Silver, Black, Gold, Aqua, Bright Chartreuse, Cerise

Solid colors available in this program are Matte Pink, Matte Powder Blue, Red Gloss, Special Silver, Black Gloss, Special Gold, Aqua Gloss, Bright Chartreuse Gloss and Cerise Gloss.

\*When ordering in Dots or Stripes, please specify color and style of lid and base. Styles include solid colored lid or base with a dots or stripes lid or base.

Standard and custom colored premier line gift boxes are available made to order with a 1250 box or 2500 piece minimum assorted sizes, 200 per size. In premier line folding set up apparel, standard and custom colored boxes are available made to order with a 500 box minimum assorted sizes, 200 per size.

Dots and stripes are available in non-premier line gift and apparel boxes - call for details.





1

trend tip:  
add dots or  
stripes to your  
packaging



2



3



4



5

- Coordinate polka dots in boxes, ribbons and tissue paper
- Match your euro shopper's handles to your striped or polka dotted boxes



6



7

1 Add some colored dots to your bakery packaging - featured are honeysuckle, black, bright chartreuse, aqua and pink dots in cupcake and pastry boxes 2 Coordinate dotted lids or bases, solid colored lids or bases with matte laminated colored grosgrain handle shoppers and metallic dots tissue paper 3 Red stripes and dots with colored grosgrain handle matte laminated shopper and coordinating holiday stripes tissue paper 4 Carryout made fun and easy with polka dotted tulip boxes in lavender, aqua and bright chartreuse 5 Emerald, a jewel toned hue, available in our matte laminated european shoppers and boxes paired with classic black & white stripes and dots 6 Upscale your everyday kraft boxes with red dots and coordinate with natural kraft european shoppers and crimson snowflake tissue paper for a seasonal look 7 Powder Blue striped premier line boxes are coordinated with a matching powder blue paper shopper and an eco-friendly white enviro shopper with a striped grosgrain ribbon handle

# BOXES | Premier Line Boxes

## Premier Line Boxes – METALLIC COLLECTION

Made in the same popular style of our premier line boxes, these gorgeous gold, silver and copper boxes have a luster that is beyond compare. The folding set-up lids and sturdy bases are sold separately, allowing you the ability to mix and match for a unique look. Imprint with your store name or logo and you will create a look of elegance like no other. Boxes ship flat for easy storage.

### Premier Line Gift Boxes - METALLIC COLLECTION

| Stock #   | Size LxWxH   | Case Pack |
|-----------|--|-----------|
| ABFS442   | 4 <sup>1/2</sup> x 4 <sup>1/2</sup> x 1 <sup>1/2</sup> Lid   | 100       |
| GBB444    | 4 <sup>1/2</sup> x 4 <sup>1/2</sup> x 4 Base                 | 100       |
| ABFS662   | 6 x 6 x 2 Lid  | 100       |
| GBB664    | 6 x 6 x 4 Base   | 100       |
| ABFS882   | 8 x 8 x 2 Lid  | 100       |
| GBB886    | 8 x 8 x 6 Base   | 50        |
| ABFS10102 | 10 <sup>1/2</sup> x 10 <sup>1/2</sup> x 2 <sup>1/2</sup> Lid | 100       |
| GBB10105  | 10 <sup>1/2</sup> x 10 <sup>1/2</sup> x 5 Base               | 50        |
| ABFS1262  | 12 x 6 x 2 Lid   | 50        |
| GBB1266   | 12 x 6 x 6 Base  | 50        |
| ABFS12122 | 12 x 12 x 2 <sup>3/4</sup> Lid                               | 50        |
| GBB12125  | 12 x 12 x 5 <sup>1/2</sup> Base                              | 50        |
| ABFS15152 | 15 x 15 x 2 <sup>3/4</sup> Lid                               | 50        |
| GBB15156  | 15 x 15 x 6 Base   | 50        |

GBB denotes a lock corner style base

In Stock Colors available: Special Gold, Special Silver

Additional Colors (made to order): Special Copper

Note: Special Copper boxes are available made to order with a 1250 box or 2500 piece assorted sizes, 200 per size.



## Hat Boxes - WHITE GLOSS

Our hat boxes have a folding set-up lid with a lock corner style base and white rope handle. The deep base sizes are perfect for hats, wreaths, and other larger gift items.



### Hat Boxes - WHITE GLOSS

| Stock # | Size LxWxH  | Case Pack |
|---------|-------------|-----------|
| HB12125 | 12 x 12 x 5 | 25        |
| HB14147 | 14 x 14 x 7 | 25        |
| HB17178 | 17 x 17 x 8 | 25        |

In Stock Colors available: White Gloss

Standard and custom colors available made to order with a 1000 box minimum.



## Premier Line Boxes – SWIRLS DESIGN

Upscale your packaging with our swirls patterned premier line boxes. Choose a solid lid or base with a complementing swirl patterned lid or base from our standard colors and two finishes - tone on tone swirl or a two colored swirl design. Add a hot stamp or four color process print for a beautiful presentation!

### Premier Line Gift Boxes - SWIRLS DESIGN

| Stock #   | Size LxWxH   | Case Pack |
|-----------|--|-----------|
| ABFS442   | 4 <sup>1/2</sup> x 4 <sup>1/2</sup> x 1 <sup>1/2</sup> Lid   | 100       |
| GBB444    | 4 <sup>1/2</sup> x 4 <sup>1/2</sup> x 4 Base                 | 100       |
| ABFS662   | 6 x 6 x 2 Lid  | 100       |
| GBB664    | 6 x 6 x 4 Base   | 100       |
| ABFS882   | 8 x 8 x 2 Lid  | 100       |
| GBB886    | 8 x 8 x 6 Base   | 50        |
| ABFS10102 | 10 <sup>1/2</sup> x 10 <sup>1/2</sup> x 2 <sup>1/2</sup> Lid | 100       |
| GBB10105  | 10 <sup>1/2</sup> x 10 <sup>1/2</sup> x 5 Base               | 50        |
| ABFS1262  | 12 x 6 x 2 Lid   | 50        |
| GBB1266   | 12 x 6 x 6 Base  | 50        |
| ABFS12122 | 12 x 12 x 2 <sup>3/4</sup> Lid                               | 50        |
| GBB12125  | 12 x 12 x 5 <sup>1/2</sup> Base                              | 50        |
| ABFS15152 | 15 x 15 x 2 <sup>3/4</sup> Lid                               | 50        |
| GBB15156  | 15 x 15 x 6 Base   | 50        |

Featured Colors available: Merlot Swirls on Cream, Silver Swirls on White

All boxes are available made to order with a minimum of 200 boxes per size

Refer to page 59 for additional box sizes available made to order - call for a quote

Refer to page 48 for a list of standard box colors - call for details

One case minimum for imprinted boxes



All boxes are manufactured with 100% recycled materials. Our natural kraft boxes contain 100% post-consumer fibers. All boxes are tinted using water based inks and are recyclable.

Pop Up Apparel Boxes –  
WHITE GLOSS, WHITE MATTE,  
WHITE GLOSS WITH GREY  
INTERIOR AND HEAVY WEIGHT  
WHITE GLOSS

With our numerous in-stock size and style options, we make it easy to find a pop up style box to fit any piece of apparel in your store. Styles include basic eco white - available in a gloss finish with a white or greyback interior, heavy weight white in gloss finish with a white interior, and our new eco white matte featuring a matte finish exterior with a white interior. Boxes fold flat for easy storage and quick assembly. Embellish boxes with your brand logo to reinforce your company image.



Pop Up Apparel Boxes -  
ECO WHITE GLOSS & ECO WHITE MATTE

| Stock #   | Size LxWxH  | Case Pack |
|-----------|---|-----------|
| ABPS1071  | 10 x 7 x 1 <sup>1/4</sup>                               | 100       |
| ABPS1151  | 11 <sup>1/2</sup> x 5 <sup>1/2</sup> x 1 <sup>5/8</sup> | 100       |
| ABPS1181  | 11 <sup>1/2</sup> x 8 <sup>1/2</sup> x 1 <sup>5/8</sup> | 100       |
| ABPS1441  | 14 x 4 <sup>1/2</sup> x 1 <sup>1/4</sup>                | 100       |
| ABPS12104 | 12 x 10 x 4   | 50        |
| ABPS1592  | 15 x 9 <sup>1/2</sup> x 2                               | 100       |
| ABPS15114 | 15 x 11 x 4   | 50        |
| ABPS17112 | 17 x 11 x 2 <sup>1/2</sup>                              | 50        |
| ABPS19123 | 19 x 12 x 3   | 50        |
| ABPS24144 | 24 x 14 x 4   | 25        |
| ABPS25155 | 25 x 15 x 5   | 25        |
| FL1441*   | 14 x 4 <sup>1/2</sup> x 5/8                             | 100       |

\*Denotes one piece folder style box. This is a made to order box with a 200 box minimum.

**Note:** Eco White Matte are made to order with a 5% upcharge to prices listed above and with a 1000 box minimum assorted sizes, with a 200 box minimum per size.

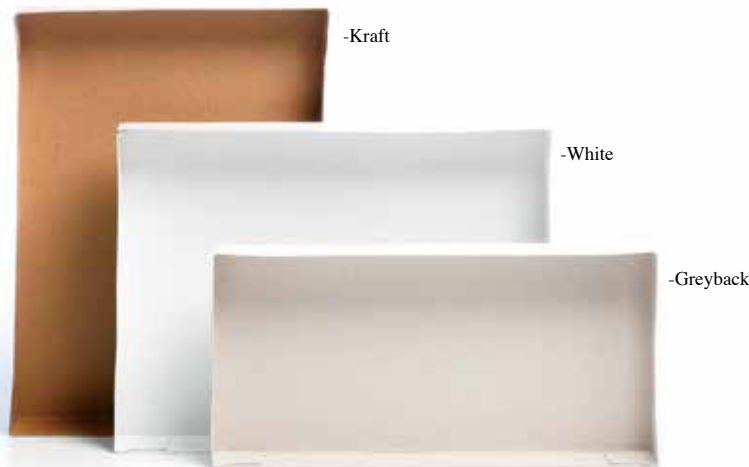
Pop Up Apparel Boxes -  
ECO WHITE GLOSS/GREYBACK

| Stock #   | Size LxWxH  | Case Pack |
|-----------|---|-----------|
| ABPS1071  | 10 x 7 x 1 <sup>1/4</sup>                               | 100       |
| ABPS1151  | 11 <sup>1/2</sup> x 5 <sup>1/2</sup> x 1 <sup>5/8</sup> | 100       |
| ABPS1181  | 11 <sup>1/2</sup> x 8 <sup>1/2</sup> x 1 <sup>5/8</sup> | 100       |
| ABPS1441  | 14 x 4 <sup>1/2</sup> x 1 <sup>1/4</sup>                | 100       |
| ABPS12104 | 12 x 10 x 4   | 50        |
| ABPS1592  | 15 x 9 <sup>1/2</sup> x 2                               | 100       |
| ABPS15114 | 15 x 11 x 4   | 50        |
| ABPS17112 | 17 x 11 x 2 <sup>1/2</sup>                              | 50        |
| ABPS19123 | 19 x 12 x 3   | 50        |
| ABPS24144 | 24 x 14 x 4   | 25        |

Pop Up Apparel Boxes - HEAVY WEIGHT WHITE GLOSS

| Stock #   | Size LxWxH  | Case Pack |
|-----------|---|-----------|
| ABPS1181  | 11 <sup>1/2</sup> x 8 <sup>1/2</sup> x 1 <sup>5/8</sup> | 100       |
| ABPS1592  | 15 x 9 <sup>1/2</sup> x 2                               | 50        |
| ABPS17112 | 17 x 11 x 2 <sup>1/2</sup>                              | 50        |
| ABPS19123 | 19 x 12 x 3   | 50        |
| ABPS24144 | 24 x 14 x 4   | 25        |

One case minimum for imprinted boxes



All boxes are manufactured with 100% recycled materials. Our natural kraft boxes contain 100% post-consumer fibers. All boxes are tinted using water based inks and are recyclable.



## Pop Up Apparel Boxes – DOUBLE KRAFT APPAREL BOXES

Upscale your kraft with our new eco-friendly Double Kraft Pop Up Apparel Boxes, now available in stock in 8 of our most popular box sizes! Boxes are made from 100% recycled natural kraft and are constructed with a heavy double kraft board. Coordinate boxes with our natural kraft paper shoppers or a kraft european style shopping bag. Embellish boxes with your brand logo and colors to make a statement. Boxes fold flat for easy storage and quick assembly.



### Pop Up Apparel Boxes - DOUBLE KRAFT

| Stock #   | Size LxWxH  | Case Pack |
|-----------|---|-----------|
| ABPS1071  | 10 x 7 x 1 <sup>1/4</sup>                               | 100       |
| ABPS1151  | 11 <sup>1/2</sup> x 5 <sup>1/2</sup> x 1 <sup>5/8</sup> | 100       |
| ABPS1181  | 11 <sup>1/2</sup> x 8 <sup>1/2</sup> x 1 <sup>5/8</sup> | 100       |
| ABPS1592  | 15 x 9 <sup>1/2</sup> x 2                               | 100       |
| ABPS15114 | 15 x 11 x 4   | 50        |
| ABPS17112 | 17 x 11 x 2 <sup>1/2</sup>                              | 50        |
| ABPS19123 | 19 x 12 x 3   | 50        |
| ABPS24144 | 24 x 14 x 4   | 25        |

One case minimum for imprinted boxes



All boxes are manufactured with 100% recycled materials. Our natural kraft boxes contain 100% post-consumer fibers. All boxes are tinted using water based inks and are recyclable.

## Pop Up Apparel Boxes – COLORS

Available in beautiful gloss or matte finish colors and a number of sizes, our colored pop-up apparel boxes coordinate beautifully with our paper shoppers. Boxes ship flat for easy storage.



### METALLIC COLORS ON KRAFT

| Stock #    | Size LxWxH  | Case Pack |
|------------|---|-----------|
| ABPS1071*  | 10 x 7 x 1 <sup>1/4</sup>                               | 100       |
| ABPS1181   | 11 <sup>1/2</sup> x 8 <sup>1/2</sup> x 1 <sup>5/8</sup> | 100       |
| ABPS1441** | 14 x 4 <sup>1/2</sup> x 1 <sup>1/4</sup>                | 100       |
| ABPS1592   | 15 x 9 <sup>1/2</sup> x 2                               | 100       |
| ABPS17112  | 17 x 11 x 2 <sup>1/2</sup>                              | 50        |
| ABPS19123  | 19 x 12 x 3   | 50        |
| ABPS24144  | 24 x 14 x 4   | 25        |

\*ABPS1071 is a made to order box with a 500 box minimum.

\*\*ABPS1441 is a made to order box with a 200 box minimum on In-Stock Metallic colors or 500 box minimum on standard colors.

**In Stock Metallic Colors on Kraft available:** Copper, Gold, Sage, Silver

**Additional Metallic Colors on Kraft (made to order):** Blue

### COLORS ON WHITE

| Stock #    | Size LxWxH  | Case Pack |
|------------|---|-----------|
| ABPS1071*  | 10 x 7 x 1 <sup>1/4</sup>                               | 100       |
| ABPS1151** | 11 <sup>1/2</sup> x 5 <sup>1/2</sup> x 1 <sup>5/8</sup> | 100       |
| ABPS1181   | 11 <sup>1/2</sup> x 8 <sup>1/2</sup> x 1 <sup>5/8</sup> | 100       |
| ABPS1441** | 14 x 4 <sup>1/2</sup> x 1 <sup>1/4</sup>                | 100       |
| ABPS1592   | 15 x 9 <sup>1/2</sup> x 2                               | 100       |
| ABPS17112  | 17 x 11 x 2 <sup>1/2</sup>                              | 50        |
| ABPS19123  | 19 x 12 x 3   | 50        |
| ABPS24144  | 24 x 14 x 4   | 25        |
| FL1441***  | 14 x 4 <sup>1/2</sup> x 5/8                             | 100       |

\*ABPS1071 is a made to order box with a 500 box minimum.

\*\*ABPS1151 and ABPS1441 are made to order box with a 200 box minimum on In-Stock Gloss colors or 500 box minimum on standard colors.

\*\*\*FL1441 is a one piece folder style box made to order with a 500 box minimum.

**In Stock Gloss Colors available:** Black, Burgundy, Dartmouth Green, Ivory, Metallic Bronze Platinum, Metallic Sage, Red, Silver

**Additional Gloss/Matte Colors on White (made to order):** Aqua, Bright Chartreuse, Cerise, Emerald, Lavender, Lemon, Matte Aloe Green, Matte Aqua, Matte Aqua Marine, Matte Burnt Orange, Matte Chartreuse, Matte Coco Brown, Matte Coral Chiffon, Matte Cream, Matte Ivory, Matte Khaki, Matte Lime Green, Matte Pastel Yellow, Matte Pearl Cream, Matte Pink, Matte Powder Blue, *Neat* Matte Sand, Matte Silver, Matte Tarnished Grey, Matte Turquoise, Merlot, Metallic Blue, Metallic Champagne, Mocha, Navy, Peach, Pearlized Cream, Pink, *Neat* Rose Gold, Sapphire, Shimmer Avocado, Shimmer Amethyst, Shimmer Honeysuckle, Shimmer Raspberry, Shimmer Turquoise, Slate Grey, *Neat* Stone White, Tangerine, Tuscany

### MATTE COLORS ON KRAFT

| Stock #    | Size LxWxH  | Case Pack |
|------------|---|-----------|
| ABPS1071*  | 10 x 7 x 1 <sup>1/4</sup>                               | 100       |
| ABPS1181   | 11 <sup>1/2</sup> x 8 <sup>1/2</sup> x 1 <sup>5/8</sup> | 100       |
| ABPS1441** | 14 x 4 <sup>1/2</sup> x 1 <sup>1/4</sup>                | 100       |
| ABPS1592   | 15 x 9 <sup>1/2</sup> x 2                               | 100       |
| ABPS17112  | 17 x 11 x 2 <sup>1/2</sup>                              | 50        |
| ABPS19123  | 19 x 12 x 3   | 50        |
| ABPS24144  | 24 x 14 x 4   | 25        |
| FL1441***  | 14 x 4 <sup>1/2</sup> x 5/8                             | 100       |

\*ABPS1071 is a made to order box with a 500 box minimum.

\*\*ABPS1441 is a made to order box with a 200 box minimum on In-Stock Matte colors or 500 box minimum on standard colors.

\*\*\*FL1441 is a one piece folder style box made to order with a 500 box minimum.

**In Stock Matte Colors on Kraft available:** Black, Burgundy, Chocolate, Dark Green, Purple, Navy, Sand, Teal

**Additional Matte Colors on Kraft (made to order):** Celery, Cerise, Gray, Olive, Rainforest Green, Red, Shimmer Amethyst, Shimmer Avocado, Shimmer Honeysuckle, Shimmer Raspberry, Shimmer Turquoise, Slate Grey, Storm Grey, Southwest Orange

### TEXTURED COLORS ON KRAFT

| Stock #   | Size LxWxH  | Case Pack |
|-----------|---|-----------|
| ABPS1181  | 11 <sup>1/2</sup> x 8 <sup>1/2</sup> x 1 <sup>5/8</sup> | 100       |
| ABPS1592  | 15 x 9 <sup>1/2</sup> x 2                               | 100       |
| ABPS17112 | 17 x 11 x 2 <sup>1/2</sup>                              | 50        |
| ABPS19123 | 19 x 12 x 3   | 50        |
| ABPS24144 | 24 x 14 x 4   | 25        |
| FL1441*   | 14 x 4 <sup>1/2</sup> x 5/8                             | 100       |

\*FL1441 is a one piece folder style box, made to order box with a 500 box minimum.

Textured colored apparel boxes are made to order with a 500 box minimum, assorted sizes and with a 200 box minimum per size.

All standard box colors (Matte/Gloss/Textured) are available made to order with a 500 box minimum per color, assorted sizes. Allow 4-6 weeks for delivery.

One case minimum for imprinted boxes



Refer to page 48 for standard box color program



All boxes are manufactured with 100% recycled materials. Our natural kraft boxes contain 100% post-consumer fibers. All boxes are tinted using water based inks and are recyclable.

# BOXES | Apparel Boxes

## Folding Set Up Apparel Boxes – WHITE GLOSS, NATURAL KRAFT AND COLORS

Our beautiful line of two piece folding set-up apparel boxes feature a short lid over a deep base, giving you the look of a rigid apparel box. Graced with your signature colors or store logo, their gift will not be the only thing to leave an impression. Boxes ship flat for easy storage.



### Folding Set Up Apparel Boxes - WHITE GLOSS

| Stock #    | Size LxWxH  | Case Pack |
|------------|---|-----------|
| ABFS1181   | 11 <sup>1/2</sup> x 8 <sup>1/2</sup> x 2 <sup>1/4</sup> | 100       |
| ABFS1441   | 14 x 4 <sup>1/2</sup> x 1 <sup>1/4</sup>                | 100       |
| ABFS1592   | 15 x 9 <sup>1/2</sup> x 2 <sup>1/4</sup>                | 100       |
| ABFS17113  | 17 x 11 x 3   | 50        |
| ABFS19123  | 19 x 12 x 3   | 50        |
| ABFS24144* | 24 x 14 x 4   | 25        |

\*ABFS24144 features a folding set-up lid with a lock corner style base. This box is made to order with a 200 box minimum.

All other bases are folding set-up style.

### Folding Set Up Apparel Boxes - COLORS

| Stock #    | Size LxWxH  | Case Pack |
|------------|---|-----------|
| ABFS1181   | 11 <sup>1/2</sup> x 8 <sup>1/2</sup> x 2 <sup>1/4</sup> | 100       |
| ABFS1441   | 14 x 4 <sup>1/2</sup> x 1 <sup>1/4</sup>                | 100       |
| ABFS1592   | 15 x 9 <sup>1/2</sup> x 2 <sup>1/4</sup>                | 100       |
| ABFS17113  | 17 x 11 x 3   | 50        |
| ABFS19123  | 19 x 12 x 3   | 50        |
| ABFS24144* | 24 x 14 x 4   | 25        |

\*ABFS24144 features a folding set-up lid with a lock corner style base.

All other bases are folding set-up style.

All standard box colors (Matte/Gloss/Textured) are available made to order with a 500 box minimum per color, assorted sizes and with a 200 box minimum per size.

Two toned lid-base color combinations in folding set-up apparel boxes are available with an upcharge - call for details

One case minimum for imprinted boxes



Refer to page 48 for standard box color program



All boxes are manufactured with 100% recycled materials. Our natural kraft boxes contain 100% post-consumer fibers. All boxes are tinted using water based inks and are recyclable.

### Folding Set Up Apparel Boxes - NATURAL KRAFT

| Stock #    | Size LxWxH  | Case Pack |
|------------|---|-----------|
| ABFS1181   | 11 <sup>1/2</sup> x 8 <sup>1/2</sup> x 2 <sup>1/4</sup> | 100       |
| ABFS1441** | 14 x 4 <sup>1/2</sup> x 1 <sup>1/4</sup>                | 100       |
| ABFS1592   | 15 x 9 <sup>1/2</sup> x 2 <sup>1/4</sup>                | 100       |
| ABFS17113  | 17 x 11 x 3   | 50        |
| ABFS19123  | 19 x 12 x 3   | 50        |
| ABFS24144* | 24 x 14 x 4   | 25        |

\*ABFS24144 features a folding set-up lid with a lock corner style base. This box is made to order with a 200 box minimum.

\*\*ABFS1441 available in Natural Kraft made to order with a 200 box minimum.

All other bases are folding set-up style.

## Folding Set-Up Ribbon Apparel Boxes

Upscale your boxes with a coordinating ribbon accent, plain or custom printed with your logo or branding message! Our folding set up apparel boxes can be manufactured with bottom slits (vertical or horizontal) allowing you to string ribbon through the box base. This box style coordinates perfectly with our grosgrain handle euro totes!



Horizontal or vertical slits fitting a 7/8" ribbon can be added to folding set up boxes. Ribbon is sold & priced separately.

## Folding Set Up Apparel Boxes – METALLIC COLORS

Our luxurious line of upscale two piece metallic folding set up apparel boxes feature a short lid over a deep base, giving you the look of a rigid apparel box. Choose from our most popular metallic colors – special gold and special silver available in stock, or special copper which is available as made to order. Boxes ship flat for easy storage and quick assembly. Pair these boxes with one of our european laminated shopping bags and add an elegant hot stamp for a sophisticated packaging ensemble.



### Folding Set Up Apparel Boxes - METALLIC COLORS

| Stock #    | Size LxWxH  | Case Pack |
|------------|---|-----------|
| ABFS1181   | 11 <sup>1/2</sup> x 8 <sup>1/2</sup> x 2 <sup>1/4</sup> | 100       |
| ABFS1592   | 15 x 9 <sup>1/2</sup> x 2 <sup>1/4</sup>                | 100       |
| ABFS17113  | 17 x 11 x 3   | 50        |
| ABFS19123  | 19 x 12 x 3   | 50        |
| ABFS24144* | 24 x 14 x 4   | 25        |

\*ABFS24144 features a folding set-up lid with a lock corner style base. This box is made to order with a 200 box minimum.

All other bases are folding set-up style.



In Stock Colors available: Special Gold, Special Silver

Additional Colors (made to order): Special Copper. Allow 4-6 weeks for delivery.



## One Piece Automatic Flip Top Apparel Boxes - WHITE GLOSS AND COLORS

With their unique flip-top design, our one piece apparel boxes offer you a fashionable packaging alternative. Available made to order in white gloss or in any of our beautiful standard colors, these boxes imprint easily for a distinctive look. Boxes ship flat for easy storage.

### Flip Top Apparel Boxes - WHITE GLOSS

| Stock #    | Size LxWxH  | Case Pack |
|------------|---|-----------|
| ABFT1182   | 11 <sup>1/2</sup> x 8 <sup>1/2</sup> x 1 <sup>3/4</sup> | 100       |
| ABFT15102  | 15 x 10 x 2   | 100       |
| ABFT17112* | 17 x 11 x 2 <sup>1/2</sup>                              | 50        |
| ABFT19123* | 19 x 12 x 3   | 50        |

\*ABFT17112 and ABFT19123 are made with heavy board.

White Gloss Flip Top Apparel boxes are made to order with a 200 box minimum per size.

### Flip Top Apparel Boxes - COLORS

| Stock #    | Size LxWxH  | Case Pack |
|------------|---|-----------|
| ABFT1182   | 11 <sup>1/2</sup> x 8 <sup>1/2</sup> x 1 <sup>3/4</sup> | 100       |
| ABFT15102  | 15 x 10 x 2   | 100       |
| ABFT17112* | 17 x 11 x 2 <sup>1/2</sup>                              | 50        |
| ABFT19123* | 19 x 12 x 3   | 50        |

\*ABFT17112 and ABFT19123 are made with heavy board. Colored Flip Top Apparel boxes are made to order with a 500 box minimum assorted sizes and with a 200 box minimum per size.

One case minimum for imprinted boxes



Refer to page 48 for standard box color program



All boxes are manufactured with 100% recycled materials. Our natural kraft boxes contain 100% post-consumer fibers. All boxes are tinted using water based inks and are recyclable.

# BOXES | Apparel Boxes

## Rigid Set Up Boxes - APPAREL & TIE BOXES

Our premier line of luxurious rigid set up style apparel and tie boxes feature a set up style box construction with pre-assembled tops and bottoms and provides for an upscale packaging presentation. Boxes have a white interior and feature a laminated paper exterior. Apparel boxes are available in stock in white gloss and matte white whereas tie boxes are available in an assortment of colors. Additional gloss, matte, metallic and even textured colors are available made to order. Elevate your brand with personalization available in elegant hot stamp, emboss print, ink print or vibrant four color process print.



### Rigid Set Up Apparel Boxes - WHITE GLOSS

| Stock #   | Size LxWxH   | Case Pack |
|-----------|--|-----------|
| ABRS1181  | 11 <sup>1/2</sup> x 8 <sup>1/2</sup> x 2 <sup>1/4</sup> + 1 <sup>1/4</sup> LID | 20        |
| ABRS1592  | 15 x 9 <sup>1/2</sup> x 2 <sup>1/4</sup> + 1 <sup>1/4</sup> LID                | 15        |
| ABRS17113 | 17 x 11 x 2 <sup>3/4</sup> + 1 <sup>1/2</sup> LID                              | 10        |
| ABRS19123 | 19 x 12 x 3 <sup>1/4</sup> + 1 <sup>1/2</sup> LID                              | 8         |
| ABRS24144 | 23 <sup>3/4</sup> x 14 x 4 + 2 LID   | 5         |

### Rigid Set Up Apparel Boxes - COLORS

| Stock #   | Size LxWxH   | Case Pack |
|-----------|--|-----------|
| ABRS1181  | 11 <sup>1/2</sup> x 8 <sup>1/2</sup> x 2 <sup>1/4</sup> + 1 <sup>1/4</sup> LID | 20        |
| ABRS1592  | 15 x 9 <sup>1/2</sup> x 2 <sup>1/4</sup> + 1 <sup>1/4</sup> LID                | 15        |
| ABRS17113 | 17 x 11 x 2 <sup>3/4</sup> + 1 <sup>1/2</sup> LID                              | 10        |
| ABRS19123 | 19 x 12 x 3 <sup>1/4</sup> + 1 <sup>1/2</sup> LID                              | 8         |
| ABRS24144 | 23 <sup>3/4</sup> x 14 x 4 + 2 LID   | 5         |

**Special Order Program:** Call for pricing.



### Rigid Set Up Boxes - TIE BOXES

| Stock #      | Size LxWxH                  | Case Pack |
|--------------|-----------------------------|-----------|
| TBSU WHT/KFT | 14 x 4 <sup>3/4</sup> x 3/4 | 100       |
| TBSU COLORS  | 14 x 4 <sup>3/4</sup> x 3/4 | 100       |

**In Stock Gloss Colors available:** Black, Dartmouth Green, Silver, White

**In Stock Matte Colors available:** Black, Dark Green, Metallic Copper, Metallic Gold, Metallic Silver, Natural Kraft

One case minimum for imprinted boxes



All boxes are manufactured with 100% recycled materials. Our natural kraft boxes contain 100% post-consumer fibers. All boxes are tinted using water based inks and are recyclable.



1



2



3

midtown shopping bags • luxe jewelry boxes • ribbon/bows • cotton fill boxes • premier

**MIX & MATCH**

pillow boxes • euro totes • gift card box • jute/canvas pouches • tissue • line boxes



4



5



6

1 Our new rose gold boxes coordinate with our white and tarnished grey midtown shoppers hot stamped in our new rose gold foil color and accented with rose gold metallic and grey dots tissue 2 Mix and match with color! Featured colors include aqua, champagne and peach. Our matte lam euros feature emboss branding and aqua dots tissue 3 Midtown shoppers featured in aloe and cream with our chartreuse dots tissue make for a tropical look. Coordinating products include luxe boxes, platform gift card boxes, tulip folders and canvas pouches 4 Our new stone white box color is the perfect neutral color accent to any packaging program. Featured items include our eco-friendly enviro silver euro tote, duet paper shoppers and canvas tote - all accented with grey dots tissue 5 Three colors, three looks! Featured items include our midtown shoppers in tarnished grey, aloe green and aqua marine with coordinating capri blossoms tissue and coordinating jewelry and gift boxes 6 Our celery and gold color combination is a perfect summery update and looks perfect with a four color process printed logo

# SPECIALTY BOXES | Jewelry Boxes

## Luxe Ribbon Jewelry Boxes

These upscale set up jewelry boxes feature an elegant matte laminated finish and luxurious color coordinated grosgrain ribbon. Available in 6 popular jewelry box sizes to fit many assorted jewelry styles. Jewelry boxes feature a black, cream or white velvet pad insert with slits to safely hold jewelry pieces. These colors coordinate perfectly with our line of matte laminated european shoppers and platform gift card boxes. Add an elegant hot stamp or four color process print.



### Luxe Ribbon Jewelry Boxes

| Stock # | Size LxWxH   | Slit Configurations                | Case Pack |
|---------|--|------------------------------------|-----------|
| JB221   | 2 <sup>3/4</sup> x 2 <sup>3/4</sup> x 1                | Bead Barb, Ring, Earring, Necklace | 100       |
| JB321   | 3 x 2 <sup>1/8</sup> x 1 <sup>1/4</sup>                | Bead Barb, Ring, Earring, Necklace | 100       |
| JB331   | 3 <sup>1/2</sup> x 3 <sup>1/2</sup> x 1 <sup>1/2</sup> | Bead Barb, Ring, Earring, Necklace | 100       |
| JB531   | 5 x 3 <sup>1/2</sup> x 1 <sup>1/2</sup>                | Necklace                           | 50        |
| JB751   | 7 x 5 <sup>1/2</sup> x 1 <sup>1/4</sup>                | Necklace                           | 50        |
| JB821   | 8 x 2 x 1 <sup>1/4</sup>                               | Bracelet Bands                     | 100       |

#### Print Charge

\*Please note the Grosgrain Ribbon Length on JB221, JB321, JB331 and JB531 is 8 inches, and the length on JB751 and JB821 is 9 inches.

\*\*Please note that the JB821 has bands for securing jewelry.



One case minimum for imprinted boxes



### Luxe Jewelry Box Bead Barbs

2<sup>1/2</sup>" long Bead Barbs for securing pendants or beads are available for JB221, JB321 and JB331 jewelry boxes at an upcharge. Barbs are packed and shipped separately.



**Note:** Barbs (JB BARB) for pendants or beads are available for JB221, JB321 and JB331 jewelry boxes. Barbs are packed and shipped separately. Call For Details.

### In Stock Colors Available

| Box Color     | Platform Color | Grosgrain Ribbon Color | Inside Velvet Pad Color |
|---------------|----------------|------------------------|-------------------------|
| Turquoise     | Turquoise      | Turquoise              | White                   |
| Gold          | Gold           | Gold                   | White                   |
| White         | Black          | Black                  | Black                   |
| White         | White          | White                  | White                   |
| Cream         | Cream          | Cream                  | Cream                   |
| Black         | Black          | Black                  | Black                   |
| Silver        | Silver         | Silver                 | White                   |
| Chocolate     | Chocolate      | Chocolate              | Cream                   |
| Navy          | Navy           | Navy                   | White                   |
| Champagne     | Champagne      | Champagne              | Cream                   |
| Natural Kraft | Natural Kraft  | Kraft                  | White                   |

**\*\*CUSTOM COLORS AND CONFIGURATIONS AVAILABLE ON BOXES - PLEASE CALL FOR MORE INFORMATION**



coordinate luxe ribbon jewelry boxes with european shoppers, platform gift card boxes, gift boxes, apparel boxes and more



1 Featured are navy matte laminated european shopping bags accessorized with sun gold striped tissue and coordinating luxe ribbon jewelry boxes with grosgrain ribbon closure 2 Luxurious packaging in matte laminated white - luxe ribbon jewelry boxes, rigid gift boxes and european shoppers with grey grosgrain handles hot stamped in light grey foil and topped with damask merlot tissue 3 The perfect coastal hue - turquoise! Coordinate european shoppers with luxe ribbon jewelry boxes and gift boxes too 4 Two color hot stamped grosgrain handle european shoppers coordinated with lemon gloss gift & apparel boxes and tissue accents in poppy floral and black stripes 5 Mix and match your packaging with contrasting colors and logos 6 A versatile hue, champagne in coordinated packaging - matte laminated european shoppers, luxe jewelry and platform boxes 7 Go neutral with our matte cream european shoppers and luxe ribbon jewelry boxes 8 Add a trendy leopard tissue to our elegant chocolate european shoppers and coordinate with luxe jewelry boxes in chocolate and gift card boxes in copper



# SPECIALTY BOXES | Jewelry Boxes

## Cotton Filled Jewelry Boxes

Our cotton filled jewelry boxes are filled with a white non-tarnishing cotton and are the perfect choice for all your jewelry packaging needs. Available in a range of popular jewelry box sizes and an assortment of over 40 colors from basic white gloss or matte and natural kraft to lustrous gloss hues, smooth finish matte colors, elegant metallic shades and even textured colors too. Add a hot stamp or four color process print for a personalized look!



### Cotton Filled Jewelry Boxes - WHITE GLOSS, WHITE SWIRL & NATURAL KRAFT

| Stock # | Size LxWxH   | Case Pack |
|---------|--|-----------|
| CF11    | 1 <sup>3/4</sup> x 1 <sup>1/8</sup> x 5/8              | 100       |
| CF21    | 2 <sup>1/2</sup> x 1 <sup>1/2</sup> x 1                | 100       |
| CF22D   | 2 <sup>3/8</sup> x 2 <sup>3/8</sup> x 1                | 100       |
| CF32    | 3 <sup>1/8</sup> x 2 <sup>1/8</sup> x 1                | 100       |
| CF33    | 3 <sup>1/2</sup> x 3 <sup>1/2</sup> x 1                | 100       |
| CF33D   | 3 <sup>1/2</sup> x 3 <sup>1/2</sup> x 1 <sup>1/2</sup> | 100       |
| CF34    | 3 <sup>1/2</sup> x 3 <sup>1/2</sup> x 2                | 100       |
| CF53    | 5 <sup>1/2</sup> x 3 <sup>1/2</sup> x 1                | 100       |
| CF65    | 6 x 5 x 1  | 50        |
| CF75    | 7 x 5 <sup>1/2</sup> x 1                               | 50        |
| CF75D** | 7 x 5 <sup>1/2</sup> x 2 <sup>1/4</sup>                | 50        |
| CF82A   | 8 x 2 x 1  | 100       |
| CF85    | 8 x 5 <sup>1/2</sup> x 1 <sup>1/4</sup>                | 50        |

### Cotton Filled Jewelry Boxes - WHITE GLOSS ASSORTMENT

| Stock # | Size LxWxH                              | Quantity |
|---------|---|----------|
| CFASST  | 2 <sup>1/2</sup> x 1 <sup>1/2</sup> x 1 | 50       |
|         | 3 <sup>1/8</sup> x 2 <sup>1/8</sup> x 1 | 30       |
|         | 3 <sup>1/2</sup> x 3 <sup>1/2</sup> x 1 | 40       |
|         | 5 <sup>1/2</sup> x 3 <sup>1/2</sup> x 1 | 15       |
|         | 7 x 5 <sup>1/2</sup> x 1                | 10       |
|         | 8 x 2 x 1                               | 10       |
| TOTAL   |   | 155      |



All boxes are manufactured with 100% recycled materials. Our natural kraft boxes contain 100% post-consumer fibers. All boxes are tinted using water based inks and are recyclable.

### Cotton Filled Jewelry Boxes - MATTE WHITE, COLORS

| Stock # | Size LxWxH   | Case Pack |
|---------|--|-----------|
| CF21    | 2 <sup>1/2</sup> x 1 <sup>1/2</sup> x 1                | 100       |
| CF32    | 3 <sup>1/8</sup> x 2 <sup>1/8</sup> x 1                | 100       |
| CF33    | 3 <sup>1/2</sup> x 3 <sup>1/2</sup> x 1                | 100       |
| CF33D   | 3 <sup>1/2</sup> x 3 <sup>1/2</sup> x 1 <sup>1/2</sup> | 100       |
| CF34    | 3 <sup>1/2</sup> x 3 <sup>1/2</sup> x 2                | 100       |
| CF53    | 5 <sup>1/2</sup> x 3 <sup>1/2</sup> x 1                | 100       |
| CF75    | 7 x 5 <sup>1/2</sup> x 1                               | 50        |
| CF75D** | 7 x 5 <sup>1/2</sup> x 2 <sup>1/4</sup>                | 50        |
| CF82A   | 8 x 2 x 1  | 100       |
| CF85    | 8 x 5 <sup>1/2</sup> x 1 <sup>1/4</sup>                | 50        |

**In Stock Gloss Colors available:** Black, Bronze Platinum, Champagne, Dark Green, Gray, Gold, Gold Linen Foil, Hot Pink, Ivory, Lime Green, Maroon, Metallic Blue, Navy, Red, Sage, Silver, Silver Linen Foil, White, White Swirl

**In Stock Matte Colors available:** Black, Burgundy, Burnt Orange, Celery, Chocolate, Cream, Dark Green, Gold, Metallic Turquoise, Navy, Natural Kraft, Powder Blue, Pink, Purple, Matte Red, Sand, Slate Gray, \*Tan Newsprint, Teal, White

\*\*CF75D size available made to order with a 500 box minimum and 6-8 weeks for delivery.

**Note:** Refer to page 9 for information on Tan Newsprint Cotton Filled Jewelry Boxes

**In Stock Metallic Colors on Kraft available:** Blue, Copper, Gold, Sage, Silver

**In Stock Textured Colors on Kraft available:** Black, Kraft, Oatmeal, Plum

\*Limited colors available in CF34, CF65 and CF85 - call for availability.

Allow 6-8 weeks for made to order colors with a 200 box minimum.

Custom colored or patterned cotton filled boxes available - call for details.



One case minimum for imprinted boxes





1



2



3



4

{ trend tip:  
add a custom  
printed ribbon }



5



6



7



8

1 Coordinate our new matte white finish jewelry boxes with our matte laminated european shopping bags and personalize with an elegant foil stamp, emboss print or four color process print 2 Coordinate matte finished pastel toned jewelry boxes with paper shoppers and brand with your logo for a personal touch 3 Trendy gloss jewelry boxes feature a lustrous shiny finish - featured colors include hot pink, lime green, white, red and black. Mix and match lids with bases for a unique presentation 4 Elevate your brand with foil stamped double face satin ribbon available in a wide assortment of colors and widths 5 Accessorize your jewelry boxes with custom printed dyna satin ribbon available in 4 widths - featured colors include sun, red, gold and chocolate 6 Rich metallic gloss finished jewelry boxes pair perfectly with our matte laminated european style shopping bags 7 Matte colored jewelry boxes look striking with a hot stamped foil logo - choose from a range of trendy shades 8 Metallic on kraft tinted jewelry boxes in copper, blue, silver, gold and sage coordinate perfectly with our metallic paper shoppers

# SPECIALTY BOXES | Jewelry Boxes

## Cotton Filled Jewelry Boxes - VELVET PAD INSERTS

For a unique look choose our velvet pad inserts that can be coordinated with our standard cotton fill jewelry boxes. Velvet pad inserts are available in three sizes to fit our CF32, CF33 and CF75 cotton fill jewelry box sizes. Choose from three velvet insert colors – black, cream or white.



### Velvet Pad Inserts for Cotton Filled Jewelry Boxes

| Box Size | Velvet Pad Insert Color | Case Pack |
|----------|-------------------------|-----------|
| CF32     | Black, Cream, White     | 100       |
| CF33     | Black, Cream, White     | 100       |
| CF75     | Black, Cream, White     | 50        |

\*Minimum order for velvet pad inserts is 100 per color or size except on the CF75 inserts where the minimum is 50.

\*Bead bars are available with an upcharge on the CF32 and CF33 velvet pad inserts.

**Note:** Velvet pad inserts sold as coordinate with our cotton fill jewelry boxes - not to be sold separately.

## Cotton Filled Jewelry Boxes - CLEAR ACETATE LID

Showcase your jewelry with our clear acetate lid jewelry boxes. Available as made to order in our most popular sizes. Choose a base color from over 40 standard cotton fill papers and personalize with a hot stamp!

### Cotton Filled Jewelry Boxes - CLEAR ACETATE LID

| Stock #     | Size LxWxH  | Case Pack |
|-------------|---|-----------|
| CF32 CLEAR  | 3 <sup>1</sup> / <sub>8</sub> x 2 <sup>1</sup> / <sub>8</sub> x 1 | 100       |
| CF33 CLEAR  | 3 <sup>1</sup> / <sub>2</sub> x 3 <sup>1</sup> / <sub>2</sub> x 1 | 100       |
| CF53 CLEAR  | 5 <sup>1</sup> / <sub>2</sub> x 3 <sup>1</sup> / <sub>2</sub> x 1 | 100       |
| CF75 CLEAR  | 7 x 5 <sup>1</sup> / <sub>2</sub> x 1                             | 50        |
| CF82A CLEAR | 8 x 2 x 1   | 100       |

Pricing includes clear acetate lid, cotton fill and jewelry box base. This box is available made to order only with 100 box minimum.

**Note:** Refer to page 72 for a list of standard cotton fill papers for jewelry box bases. Allow 6-8 weeks for delivery.



One case minimum for imprinted boxes



## Cotton Filled Jewelry Boxes - ONE PIECE FOLDING

These economical one piece folding jewelry boxes are available in white and kraft, and our most popular sizes. Finish with a hot stamp or an ink print.

### Cotton Filled Jewelry Boxes - ONE PIECE FOLDING

| Stock # | Size LxWxH  | Case Pack |
|---------|---|-----------|
| JF321   | 3 x 2 x 1   | 250       |
| JF331   | 3 <sup>1</sup> / <sub>2</sub> x 3 <sup>1</sup> / <sub>2</sub> x 1 | 250       |
| JF531   | 5 <sup>1</sup> / <sub>2</sub> x 3 <sup>1</sup> / <sub>2</sub> x 1 | 100       |
| JF751   | 7 x 5 <sup>1</sup> / <sub>4</sub> x 1                             | 100       |

**In Stock Colors available:** Natural Kraft, White Gloss

Cotton fill for the boxes packed separately.

Standard box colors are available made to order with a 1000 box minimum per size.

**Note:** Refer to page 48 for a list of standard box colors. Allow 6-8 weeks for delivery.

One case minimum for imprinted boxes



Refer to page 48 for standard box color program



All boxes are manufactured with 100% recycled materials. Our natural kraft boxes contain 100% post-consumer fibers. All boxes are tinted using water based inks and are recyclable.

## Cotton Filled Jewelry Boxes - TUSCANY

Showcase your jewelry in our vibrant earth toned tuscanly jewelry boxes. Boxes feature a two toned look with a matte burnt orange lid and matte chocolate base and contain a white non-tarnishing cotton insert. Personalize with a hot stamp or four color process print for a lasting impression.



### Cotton Filled Jewelry Boxes - TUSCANY

| Stock # | Size LxWxH   | Case Pack |
|---------|--|-----------|
| CF21    | 2 <sup>1/2</sup> x 1 <sup>1/2</sup> x 1                | 100       |
| CF32    | 3 <sup>1/8</sup> x 2 <sup>1/8</sup> x 1                | 100       |
| CF33    | 3 <sup>1/2</sup> x 3 <sup>1/2</sup> x 1                | 100       |
| CF33D   | 3 <sup>1/2</sup> x 3 <sup>1/2</sup> x 1 <sup>1/2</sup> | 100       |
| CF53    | 5 <sup>1/2</sup> x 3 <sup>1/2</sup> x 1                | 100       |
| CF75    | 7 x 5 <sup>1/2</sup> x 1                               | 50        |
| CF82A   | 8 x 2 x 1  | 100       |

**In Stock Colors available:** Tuscanly (matte burnt orange lid and matte chocolate base)

## Cotton Filled Jewelry Boxes - ZEBRA

Our trendy zebra cotton filled jewelry boxes are available as a zebra base and lid or mix it up with a two tone effect with your choice of a black gloss or zebra pattern lid or base. Boxes are filled with a white non-tarnishing cotton and are available in six of our most popular jewelry box sizes. Coordinate these boxes with our Black & White Zebra premier line gift and apparel boxes for an upscale look.



### Jewelry Boxes - ZEBRA STRIPE

| Stock # | Size LxWxH   | Case Pack |
|---------|--|-----------|
| CF32    | 3 <sup>1/8</sup> x 2 <sup>1/8</sup> x 1                | 100       |
| CF33    | 3 <sup>1/2</sup> x 3 <sup>1/2</sup> x 1                | 100       |
| CF33D   | 3 <sup>1/2</sup> x 3 <sup>1/2</sup> x 1 <sup>1/2</sup> | 100       |
| CF53    | 5 <sup>1/2</sup> x 3 <sup>1/2</sup> x 1                | 100       |
| CF75    | 7 x 5 <sup>1/2</sup> x 1                               | 50        |
| CF82A   | 8 x 2 x 1  | 100       |

**In-Stock Lid Colors available:** Black Gloss or Zebra Stripe

**In-Stock Base Colors available:** Black Gloss or Zebra Stripe

## Cotton Filled Jewelry Boxes - DUET SERIES

Our signature duet series jewelry boxes feature a 3 tiered box style construction and are made from our standard cotton filled jewelry boxes - choose from a large selection of colors available in matte, gloss or metallic finishes. Mix and match colors to create a unique and upscale look.



### Cotton Filled Jewelry Boxes - DUET SERIES

| Stock #   | Size LxWxH   | Case Pack |
|-----------|--|-----------|
| CF32DUET  | 3 <sup>1/8</sup> x 2 <sup>1/8</sup> x 1 <sup>3/8</sup> | 100       |
| CF33DUET  | 3 <sup>1/2</sup> x 3 <sup>1/2</sup> x 1 <sup>1/2</sup> | 100       |
| CF82ADUET | 8 x 2 x 1  | 100       |

\*This is a 3 piece box available made to order with a 500 box minimum per size. Any standard cotton filled paper combination can be used. Cotton fill is included in all boxes.

**Note:** Refer to page 72 for a list of standard cotton fill papers. Allow 6-8 weeks for delivery.

One case minimum for imprinted boxes



All boxes are manufactured with 100% recycled materials. Our natural kraft boxes contain 100% post-consumer fibers. All boxes are tinted using water based inks and are recyclable.

# SPECIALTY BOXES | Jewelry Boxes & Folders

## Cotton Filled Jewelry Boxes - DIAMOND SERIES

Our diamond series jewelry boxes feature a diamond cut lid to create an upscale presentation. Boxes are available in 7 sizes and each box is filled with white non-tarnishing cotton. Get a unique look by mixing and matching lid and base colors with our extensive selection of jewelry box colors from basics like white or kraft to lustrous gloss hues, smooth finish matte colors, elegant metallic shades and even textured colors too. Coordinate these boxes with our many styles of shopping bags and personalize with an elegant hot stamp or colorful four color process print for a lasting impression.




### Cotton Filled Jewelry Boxes - DIAMOND SERIES

| Stock # | Size LxWxH   | Case Pack |
|---------|--|-----------|
| CF21V   | 2 <sup>1/2</sup> x 1 <sup>1/2</sup> x 1                | 100       |
| CF32V   | 3 <sup>1/8</sup> x 2 <sup>1/8</sup> x 1                | 100       |
| CF33V   | 3 <sup>1/2</sup> x 3 <sup>1/2</sup> x 1                | 100       |
| CF33DV  | 3 <sup>1/2</sup> x 3 <sup>1/2</sup> x 1 <sup>1/2</sup> | 100       |
| CF53V   | 5 <sup>1/2</sup> x 3 <sup>1/2</sup> x 1                | 100       |
| CF75V   | 7 x 5 <sup>1/2</sup> x 1                               | 50        |
| CF82AV  | 8 x 2 x 1  | 100       |

Diamond series boxes are available made to order with a 500 box minimum per size. Any standard cotton filled paper combination can be used. Cotton fill is included in all boxes. **Note:** Refer to page 72 for a list of standard cotton fill papers. Allow 6-8 weeks for delivery.

One case minimum for imprinted boxes



 All boxes are manufactured with 100% recycled materials. Our natural kraft boxes contain 100% post-consumer fibers. All boxes are tinted using water based inks and are recyclable.

## Tulip Style Certificate Folders

Make a lasting impression with our stylish glossy white tulip style certificate folders. These unique square shaped folders unfold to a square insert that is pre-designed with a scroll pattern and has two notch slits to hold your gift card in place. Choose from several insert colors available - black, silver or gold scroll pattern design on a white card insert. Embellish these folders with an upscale hot stamp or vibrant four color process print for a personalized look.



### Tulip Certificate Folders


| Stock #     | Size LxWxH                          | Case Pack |
|-------------|-------------------------------------|-----------|
| FL55 WHITE  | 5 <sup>1/2</sup> x 5 <sup>1/2</sup> | 100       |
| FL55 COLORS | 5 <sup>1/2</sup> x 5 <sup>1/2</sup> | 100       |

**In Stock Colors available:** White Gloss

**In Stock Insert Colors available:** Black, Gold, Silver (Please specify insert color with order)

Folders and Inserts are available in standard colors as made to order with a 1000 folder/insert minimum.

**Note:** Refer to page 48 for a list of standard box colors. Allow 6-8 weeks for delivery.

 All boxes are manufactured with 100% recycled materials. Our natural kraft boxes contain 100% post-consumer fibers. All boxes are tinted using water based inks and are recyclable.

One case minimum for imprinted folders



Refer to page 48 for standard box color program

## Gift Certificates & Gift Certificate Boxes

Our gift certificates boxes are available in two sizes and in an assortment of box colors. Boxes contain a white gloss cardboard platform insert for a beautiful display. Coordinating gift certificates available in avon white, gray or ivory and are consecutively numbered. Boxes and certificates can be personalized with your branding for a personal touch!



### Gift Certificate Boxes

| Stock #       | Size LxWxH                                | Case Pack |
|---------------|---|-----------|
| CB WHT/KFT    | 6 <sup>3/4</sup> x 3 <sup>1/4</sup> x 5/8 | 100       |
| CB831 WHT/KFT | 8 <sup>1/2</sup> x 3 <sup>1/2</sup> x 5/8 | 100       |
| CB COLORS     | 6 <sup>3/4</sup> x 3 <sup>1/4</sup> x 5/8 | 100       |
| CB831 COLORS  | 8 <sup>1/2</sup> x 3 <sup>1/2</sup> x 5/8 | 100       |



**In Stock Gloss Colors available:** Black, Dark Green, Ivory, Gray, Gold, Gold Linen Foil, Maroon, Navy, Sage, Silver, Silver Linen Foil, White

**In Stock Matte Colors available:** Black, Burgundy, Dark Green, Natural Kraft, Purple, Sand, Teal

**In Stock Metallic Colors on Kraft available:** Copper, Gold, Sage, Silver

**In Stock Textured Colors on Kraft available:** Natural Kraft, Plum

### Gift Certificates

| Stock #            | Size LxWxH                          | Case Pack |
|--------------------|-------------------------------------|-----------|
| CERT PRINTED*      | 6 <sup>3/4</sup> x 3 <sup>1/4</sup> | 100       |
| CERTLARGE PRINTED* | 8 <sup>1/2</sup> x 3 <sup>1/2</sup> | 100       |



**In Stock Colors available:** Avon White, Gray and Ivory

\*Gift Certificate pricing includes a one color hot stamp, 200 minimum.

Imprint plates priced separately. Allow 3-4 weeks for delivery after proof approval.

Matching envelopes available - call for pricing.

Hot stamping is available for envelopes with a 200 minimum. Imprint plates priced separately.

## Gift Card & Gift Certificate Boxes

Package your gift cards or certificates in our stylish boxes. Our smaller gift card boxes are perfectly sized to fit your gift card and are available in stock in a range of our most popular colors. Our larger format box is available in two styles - gift card and gift certificate. The large gift card box features slits to hold a gift card securely in place and the large gift certificate box has an elevated platform to fit a 6<sup>1/2</sup> x 4<sup>5/8</sup> sized gift certificate.



### Gift Card/Certificate Boxes - LARGE

| Stock #         | Size LxWxH                 | Case Pack |
|-----------------|----------------------------|-----------|
| CB65 WHT        | 6 <sup>5/8</sup> x 5 x 5/8 | 100       |
| CB65 COLORS     | 6 <sup>5/8</sup> x 5 x 5/8 | 100       |
| CB65CARD WHT    | 6 <sup>5/8</sup> x 5 x 5/8 | 100       |
| CB65CARD COLORS | 6 <sup>5/8</sup> x 5 x 5/8 | 100       |

\*\*Large Gift Card box features a color coordinated die cut platform that can be printed in addition to the lid.

**Note:** These are made to order boxes. Standard cotton fill paper colors are available with a 200 box minimum per size. Refer to page 48 for a list of standard box colors.

One case minimum for imprinted boxes



### Gift Card Boxes - SMALL

| Stock #        | Size LxWxH                                | Case Pack |
|----------------|---|-----------|
| GCCARD WHT/KFT | 3 <sup>1/2</sup> x 2 <sup>1/4</sup> x 3/4 | 100       |
| GCCARD COLORS  | 3 <sup>1/2</sup> x 2 <sup>1/4</sup> x 3/4 | 100       |



**In Stock Colors available:** Matte Black, Matte Dark Green, Metallic Copper on Kraft, Metallic Gold on Kraft, Metallic Silver on Kraft, Natural Kraft, Silver Gloss, White Gloss

# SPECIALTY BOXES | Gift Card Boxes

## Platform Gift Card Boxes

Trendy new styling, these upscale platform gift card boxes feature an elegant matte laminated finish and a luxurious color coordinated grosgrain ribbon closure for that finishing touch. Boxes are designed with an insert to hold a 3<sup>3/8</sup>" x 2<sup>1/8</sup>" standard size gift card. Coordinate with one of our matte laminated european shoppers to complete your look. Personalize with a hot stamp or a four color process print to make a lasting impression!



### Platform Gift Card Boxes

| Stock #       | Size LxWxH                                | Case Pack |
|---------------|---|-----------|
| GC741PLATFORM | 7 <sup>1/4</sup> x 4 <sup>1/4</sup> x 5/8 | 50        |

### In Stock Colors Available

| Box Color             | Platform Color  | Grosgrain Ribbon Color | Insert Color    |
|-----------------------|-----------------|------------------------|-----------------|
| Matte Turquoise       | Turquoise       | Turquoise              | Turquoise       |
| Matte Gold            | Gold            | Gold                   | Gold            |
| Matte White           | Black           | Black                  | White           |
| Matte White           | White           | White                  | White           |
| Matte Cream           | Cream           | Cream                  | Cream           |
| Matte Black           | Black           | White                  | White           |
| Gloss Black           | Black           | Black                  | White           |
| Matte Silver          | Silver          | Silver                 | Silver          |
| Matte Chocolate       | Chocolate       | Copper                 | Copper          |
| Natural Kraft         | Natural Kraft   | Kraft                  | Natural Kraft   |
| Matte Copper          | Copper          | Copper                 | Copper          |
| Matte Bronze Platinum | Bronze Platinum | Bronze Platinum        | Bronze Platinum |
| Gloss Red             | Red             | Red                    | Red             |
| Champagne             | Champagne       | Champagne              | Champagne       |

All inserts match box exterior colors except the following:

Matte Chocolate gift card box has a Matte Copper insert

Matte Black gift card box has a Matte White insert

Black Gloss gift card box has a Matte White insert

Two case minimum for imprinted boxes



**\*\*CUSTOM COLORS AND CONFIGURATIONS AVAILABLE ON BOXES - PLEASE CALL FOR MORE INFORMATION**



## Gable Boxes

With their built in handle and distinctive shape, Gable Boxes are perfect for gifts and food items. Choose from many sizes and colors, including our window style gable boxes.



### Gable Boxes

| Stock #                 | Size LxWxH                                | Case Pack |
|-------------------------|---|-----------|
| LB422 White             | 4 x 2 <sup>1/2</sup> x 2 <sup>1/2</sup>   | 100       |
| LB422 Kraft             | 4 x 2 <sup>1/2</sup> x 2 <sup>1/2</sup>   | 100       |
| LB422 Matte             | 4 x 2 <sup>1/2</sup> x 2 <sup>1/2</sup>   | 100       |
| LB422 Gingham*          | 4 x 2 <sup>1/2</sup> x 2 <sup>1/2</sup>   | 100       |
| LB422 Gloss             | 4 x 2 <sup>1/2</sup> x 2 <sup>1/2</sup>   | 100       |
| LB843 White             | 8 x 4 x 3                                 | 50        |
| LB843 Kraft             | 8 x 4 x 3                                 | 50        |
| LB843 Matte*/Gingham*   | 8 x 4 x 3                                 | 50        |
| LB843 Gloss*            | 8 x 4 x 3                                 | 50        |
| LB845 White             | 8 x 4 <sup>7/8</sup> x 5 <sup>1/4</sup>   | 50        |
| LB845 Kraft             | 8 x 4 <sup>7/8</sup> x 5 <sup>1/4</sup>   | 50        |
| LB845 Matte             | 8 x 4 <sup>7/8</sup> x 5 <sup>1/4</sup>   | 50        |
| LB845 Gingham*          | 8 x 4 <sup>7/8</sup> x 5 <sup>1/4</sup>   | 50        |
| LB845 Tan Newsprint**   | 8 x 4 <sup>7/8</sup> x 5 <sup>1/4</sup>   | 50        |
| LB845 Gloss             | 8 x 4 <sup>7/8</sup> x 5 <sup>1/4</sup>   | 50        |
| LB953 White             | 9 <sup>1/2</sup> x 5 x 3                  | 100       |
| LB953 Kraft             | 9 <sup>1/2</sup> x 5 x 3                  | 100       |
| LB953 Matte*/Gingham*   | 9 <sup>1/2</sup> x 5 x 3                  | 100       |
| LB953 Gloss*            | 9 <sup>1/2</sup> x 5 x 3                  | 100       |
| LB966 White             | 9 x 6 x 6                                 | 50        |
| LB966 Kraft             | 9 x 6 x 6                                 | 50        |
| LB966 Matte             | 9 x 6 x 6                                 | 50        |
| LB966 Gingham*          | 9 x 6 x 6                                 | 50        |
| LB966 Gloss             | 9 x 6 x 6                                 | 50        |
| LB979 White             | 9 x 7 <sup>1/2</sup> x 9                  | 50        |
| LB979 Kraft             | 9 x 7 <sup>1/2</sup> x 9                  | 50        |
| LB979 Matte*/Gingham*   | 9 x 7 <sup>1/2</sup> x 9                  | 50        |
| LB979 Gloss*            | 9 x 7 <sup>1/2</sup> x 9                  | 50        |
| LB1033 White            | 10 x 3 <sup>1/2</sup> x 3 <sup>1/2</sup>  | 100       |
| LB1033 Kraft            | 10 x 3 <sup>1/2</sup> x 3 <sup>1/2</sup>  | 100       |
| LB1033 Matte*/Gingham*  | 10 x 3 <sup>1/2</sup> x 3 <sup>1/2</sup>  | 100       |
| LB1033 Gloss*           | 10 x 3 <sup>1/2</sup> x 3 <sup>1/2</sup>  | 100       |
| LB10103 White**         | 10 <sup>1/4</sup> x 10 <sup>1/4</sup> x 3 | 50        |
| LB10103 Kraft**         | 10 <sup>1/4</sup> x 10 <sup>1/4</sup> x 3 | 50        |
| LB10103 Matte*/Gingham* | 10 <sup>1/4</sup> x 10 <sup>1/4</sup> x 3 | 50        |
| LB10103 Gloss*          | 10 <sup>1/4</sup> x 10 <sup>1/4</sup> x 3 | 50        |

\*Denotes made to order boxes with a 500 box minimum per size.

\*\*Denotes made to order boxes with a 200 box minimum.

Note: Tan Newsprint available in 8 x 4<sup>7/8</sup> x 5<sup>1/4</sup> only as a made to order box with a 200 box minimum.

In Stock Gloss Colors on White available: Black, Ivory, Red

In Stock Matte Colors on Kraft available: Black, Burgundy, Dark Green, Navy, Purple

Gingham Colors on Kraft available: Blue, Burgundy, Green, Red

Standard colors are available made to order with a 500 box minimum per size.

Refer to page 48 for a list of standard box colors.

One case minimum for imprinted boxes



## Gable Boxes with Cup Holder

This isn't your ordinary lunch box! This lunch box has an insert to hold a soda can or beverage. Handles fold down flat giving you the ability to stack the boxes.



### Gable Boxes - CUP HOLDER

| Stock #             | Size LxWxH | Case Pack |
|---------------------|------------|-----------|
| LB965CH White/Kraft | 9 x 6 x 5  | 100       |
| LB965CH Colors      | 9 x 6 x 5  | 100       |

### Gable Boxes - FLAT LUNCH BOX

| Stock #             | Size LxWxH | Case Pack |
|---------------------|------------|-----------|
| LB965 White/Kraft   | 9 x 6 x 5  | 100       |
| LB965 Matte/Gingham | 9 x 6 x 5  | 100       |
| LB965 Gloss         | 9 x 6 x 5  | 100       |

Note: LB965CH and LB965 are made to order boxes.

\*LB965 Flat Lunch Box does not have a handle or an insert to hold soda cans or beverages. Standard colors are available made to order with a 500 box minimum per size. Refer to page 48 for a list of standard box colors.



### Gable Boxes - WINDOWED STYLE

| Stock #            | Size LxWxH                              | Case Pack |
|--------------------|---|-----------|
| LB422W White/Kraft | 4 x 2 <sup>1/2</sup> x 2 <sup>1/2</sup> | 100       |
| LB422W Colors*     | 4 x 2 <sup>1/2</sup> x 2 <sup>1/2</sup> | 100       |
| LB845W White/Kraft | 8 x 4 <sup>7/8</sup> x 5 <sup>1/4</sup> | 50        |
| LB845W Colors*     | 8 x 4 <sup>7/8</sup> x 5 <sup>1/4</sup> | 50        |
| LB966W White/Kraft | 9 x 6 x 6                               | 50        |
| LB966W Colors*     | 9 x 6 x 6                               | 50        |

In Stock Colors available: White Gloss

Standard colors are available made to order with a 1000 box minimum per size.

Refer to page 48 for a list of standard box colors.



All boxes are manufactured with 100% recycled materials. Our natural kraft boxes contain 100% post-consumer fibers. All boxes are tinted using water based inks and are recyclable.



# SPECIALTY BOXES | Pouches

## Pouches - White Gloss, Natural Kraft, and Colors

With or without handles, the distinctive pillow shape of our versatile pouch box is perfect for everything from gifts to garments. Boxes ship flat and are easily assembled – just tuck in ends for quick packaging. Add personalization with an elegant hot stamp, affordable ink print or vibrant four color process print to enhance your brand presentation.



### Pouches - NO HANDLES

| Stock #            | Size LxWxH                              | Case Pack |
|--------------------|---|-----------|
| FL431 White/Kraft  | 4 x 3 <sup>3/4</sup> x 1 <sup>1/2</sup> | 250       |
| FL431 Colors       | 4 x 3 <sup>3/4</sup> x 1 <sup>1/2</sup> | 250       |
| FL651 White/Kraft  | 6 x 5 x 1 <sup>1/2</sup>                | 100       |
| FL651 Colors       | 6 x 5 x 1 <sup>1/2</sup>                | 100       |
| FL752 White/Kraft  | 7 x 5 <sup>1/2</sup> x 2                | 100       |
| FL752 Colors       | 7 x 5 <sup>1/2</sup> x 2                | 100       |
| FL5210 White/Kraft | 5 x 9 x 2                               | 100       |
| FL5210 Colors      | 5 x 9 x 2                               | 100       |
| FL1571* White      | 15 x 7 x 1 <sup>1/2</sup>               | 100       |



**In Stock Colors available:** Black Gloss, Red Gloss, Natural Kraft, White Gloss  
 \*FL1571 available in White Gloss only with a 200 box order minimum.  
 Standard colors are available made to order with a 500 box minimum per size.  
 Refer to page 48 for a list of standard box colors.

### Pouches - WITH HANDLES

| Stock #              | Size LxWxH                 | Case Pack |
|----------------------|----------------------------|-----------|
| FL751H White/Kraft   | 7 x 5 x 1 <sup>1/4</sup>   | 100       |
| FL751H Colors        | 7 x 5 x 1 <sup>1/4</sup>   | 100       |
| FL1192H White/Kraft  | 11 <sup>1/2</sup> x 9 x 2  | 100       |
| FL1192H Colors       | 11 <sup>1/2</sup> x 9 x 2  | 100       |
| FL15102H White/Kraft | 15 x 10 x 2 <sup>1/2</sup> | 100       |
| FL15102H Colors      | 15 x 10 x 2 <sup>1/2</sup> | 100       |



**In Stock Colors available:** Black Gloss, Red Gloss, Natural Kraft, White Gloss  
 Standard colors are available made to order with a 500 box minimum per size.  
 Refer to page 48 for a list of standard box colors.



One case minimum for imprinted boxes



All boxes are manufactured with 100% recycled materials. Our natural kraft boxes contain 100% post-consumer fibers. All boxes are tinted using water based inks and are recyclable.

## Apparel Pouches

Available in 4 popular sizes, our pillow style apparel pouches offer a unique garment packaging solution. Boxes are available made to order with a 500 box minimum per size. Boxes ship flat and are easily assembled – just tuck in ends for quick packaging. Personalize with a brand logo available in hot stamp, ink print or four color process print.

### Pouches - APPAREL

| Stock #             | Size LxWxH  | Case Pack |
|---------------------|---|-----------|
| FL1181 White/Kraft  | 11 <sup>1/2</sup> x 8 <sup>1/2</sup> x 1 <sup>3/4</sup> | 100       |
| FL1181 Colors       | 11 <sup>1/2</sup> x 8 <sup>1/2</sup> x 1 <sup>3/4</sup> | 100       |
| FL1592 White/Kraft  | 15 x 9 <sup>1/2</sup> x 2 <sup>1/4</sup>                | 100       |
| FL1592 Colors       | 15 x 9 <sup>1/2</sup> x 2 <sup>1/4</sup>                | 100       |
| FL17112 White/Kraft | 17 x 11 x 2 <sup>1/2</sup>                              | 50        |
| FL17112 Colors      | 17 x 11 x 2 <sup>1/2</sup>                              | 50        |
| FL19123 White/Kraft | 19 x 12 x 3 <sup>1/4</sup>                              | 50        |
| FL19123 Colors      | 19 x 12 x 3 <sup>1/4</sup>                              | 50        |

**Note:** Apparel pouches are made to order boxes with a 500 box minimum per size. Refer to page 48 for a list of standard box colors.

## Tulip Boxes

Package your unique gift items, pastries and bakery treats in our specialty tulip boxes with a built in handle for convenience. Available in 6 sizes, boxes are available in stock in basic white gloss and natural kraft. Boxes can be manufactured with contrasting colors on front and back that when folded gives your tulip box a hint of color.

### Tulip Boxes - WHITE GLOSS, NATURAL KRAFT & COLORS

| Stock #           | Size LxWxH  | Case Pack |
|-------------------|---|-----------|
| TB111 White/Kraft | 1 <sup>1</sup> / <sub>2</sub> x 1 <sup>1</sup> / <sub>2</sub> x 1 <sup>1</sup> / <sub>2</sub> | 100       |
| TB111 Colors      | 1 <sup>1</sup> / <sub>2</sub> x 1 <sup>1</sup> / <sub>2</sub> x 1 <sup>1</sup> / <sub>2</sub> | 100       |
| TB222 White/Kraft | 2 x 2 x 2   | 100       |
| TB222 Colors      | 2 x 2 x 2   | 100       |
| TB333 White/Kraft | 3 x 3 x 3   | 100       |
| TB333 Colors      | 3 x 3 x 3   | 100       |
| TB444 White/Kraft | 4 <sup>1</sup> / <sub>2</sub> x 4 <sup>1</sup> / <sub>2</sub> x 4 <sup>1</sup> / <sub>2</sub> | 100       |
| TB444 Colors      | 4 <sup>1</sup> / <sub>2</sub> x 4 <sup>1</sup> / <sub>2</sub> x 4 <sup>1</sup> / <sub>2</sub> | 100       |
| TB555 White/Kraft | 5 <sup>1</sup> / <sub>2</sub> x 5 <sup>1</sup> / <sub>2</sub> x 5 <sup>1</sup> / <sub>2</sub> | 100       |
| TB555 Colors      | 5 <sup>1</sup> / <sub>2</sub> x 5 <sup>1</sup> / <sub>2</sub> x 5 <sup>1</sup> / <sub>2</sub> | 100       |
| TB777 White/Kraft | 7 x 7 x 7   | 100       |
| TB777 Colors      | 7 x 7 x 7   | 100       |



**In Stock Colors available:** Natural Kraft, White Gloss

Standard colors are available made to order with a 500 box minimum per size. Refer to page 48 for a list of standard box colors. Custom colors are available made to order with a 2500 box minimum assorted sizes, 500 per size.

## Wine Bottle Boxes – ONE PIECE STYLE AND TWO PIECE FOLDING SET-UP

We offer two wonderful styles of wine bottle boxes to choose from - our standard one piece style one bottle box, available in several colors or our folding set-up wine bottle boxes, available in sizes for one, two and three bottles. The folding set-up box is available in the same gorgeous gold and silver that we offer in our premier line boxes and include a white cardboard insert divider.

### Wine Boxes - ONE PIECE STYLE

| Stock #              | Size LxWxH   | Case Pack |
|----------------------|--|-----------|
| WB3313 White         | 3 <sup>1</sup> / <sub>2</sub> x 3 <sup>1</sup> / <sub>2</sub> x 13 <sup>1</sup> / <sub>2</sub> | 100       |
| WB3313 Natural       | 3 <sup>1</sup> / <sub>2</sub> x 3 <sup>1</sup> / <sub>2</sub> x 13 <sup>1</sup> / <sub>2</sub> | 100       |
| WB3313 Matte/Gingham | 3 <sup>1</sup> / <sub>2</sub> x 3 <sup>1</sup> / <sub>2</sub> x 13 <sup>1</sup> / <sub>2</sub> | 100       |
| WB3313 Gloss         | 3 <sup>1</sup> / <sub>2</sub> x 3 <sup>1</sup> / <sub>2</sub> x 13 <sup>1</sup> / <sub>2</sub> | 100       |
| WB3313W White*       | 3 <sup>1</sup> / <sub>2</sub> x 3 <sup>1</sup> / <sub>2</sub> x 13 <sup>1</sup> / <sub>2</sub> | 100       |
| WB3313W Colors*      | 3 <sup>1</sup> / <sub>2</sub> x 3 <sup>1</sup> / <sub>2</sub> x 13 <sup>1</sup> / <sub>2</sub> | 100       |

**In Stock Gloss Colors available:** Burgundy, Red, White

**In Stock Matte Colors available:** Black, Burgundy, Natural Kraft, Blue Gingham, Burgundy Gingham, Green Gingham, Red Gingham

Standard colors are available made to order with a 500 box minimum. Refer to page 48 for a list of standard box colors.

\*Wine Box with Windows (WB3313W) available in White as made to order with a 500 box minimum.

\*Wine Box with Windows (WB3313W) available in standard box colors as made to order with a 1000 box minimum.

### Wine Boxes - TWO PIECE FOLDING SET UP

| Stock #              | Size LxWxH  | Case Pack |
|----------------------|---|-----------|
| WBFSSINGLEWINE White | 13 x 3 <sup>1</sup> / <sub>2</sub> x 3 <sup>1</sup> / <sub>2</sub>  | 50        |
| WBFSSINGLEWINE Red   | 13 x 3 <sup>1</sup> / <sub>2</sub> x 3 <sup>1</sup> / <sub>2</sub>  | 50        |
| WBFSSINGLEWINE Met.  | 13 x 3 <sup>1</sup> / <sub>2</sub> x 3 <sup>1</sup> / <sub>2</sub>  | 50        |
| WBFSDOUBLEWINE White | 13 x 7 x 3 <sup>1</sup> / <sub>2</sub>                              | 50        |
| WBFSDOUBLEWINE Red   | 13 x 7 x 3 <sup>1</sup> / <sub>2</sub>                              | 50        |
| WBFSDOUBLEWINE Met.  | 13 x 7 x 3 <sup>1</sup> / <sub>2</sub>                              | 50        |
| WBFSTRIPLEWINE White | 13 x 10 <sup>1</sup> / <sub>2</sub> x 3 <sup>1</sup> / <sub>2</sub> | 25        |
| WBFSTRIPLEWINE Red   | 13 x 10 <sup>1</sup> / <sub>2</sub> x 3 <sup>1</sup> / <sub>2</sub> | 25        |
| WBFSTRIPLEWINE Met.  | 13 x 10 <sup>1</sup> / <sub>2</sub> x 3 <sup>1</sup> / <sub>2</sub> | 25        |



**In Stock Gloss Colors available:** Special Gold, Special Silver, Red, White

**Note:** Double and Triple bottle sizes include white cardboard insert divider. Standard colors are available made to order with a 500 box minimum per size. Refer to page 48 for a list of standard box colors.



One case minimum for imprinted boxes



All boxes are manufactured with 100% recycled materials. Our natural kraft boxes contain 100% post-consumer fibers. All boxes are tinted using water based inks and are recyclable.

# SPECIALTY BOXES | Bottle Packaging

## Corrugated Bottle Carriers

Available in natural kraft and white kraft, our sturdy corrugated bottle carriers are available in three sizes specially designed to fit wine, beer, olive oils and other gourmet bottled goods. Carriers have a convenient built in handle for easy carrying. Choose from 4 and 6 bottle sizes. The beer carrier is designed with a more compact styling specially designed to fit six bottles of beer. Ink print personalization is available.



50 box minimum for imprinted boxes



## Sampler Box

Our sampler box, designed to fit wine and beer bottles, features inserts to hold 6 bottles and a convenient built in handle for ease of carrying. This carrier has front window cut outs which allows you to display your bottles. Boxes are manufactured to your color requirements – choose one of our standard box colors or your very own. Personalize these boxes with an ink print, hot stamp or a four color process print for maximum branding impact.

### Sampler Box - WHITE GLOSS & COLORS

| Stock #      | Size LxWxH                              | Case Pack |
|--------------|---|-----------|
| WB974 White  | 9 <sup>1/4</sup> x 7 x 4 <sup>3/4</sup> | 100       |
| WB974 Colors | 9 <sup>1/4</sup> x 7 x 4 <sup>3/4</sup> | 100       |

\*Sampler Boxes are made to order in white gloss and standard box colors with a 500 box minimum. Refer to page 48 for a list of standard box colors.



One case minimum for imprinted boxes



## Corrugated Double Bottle Carryall

Our sturdy corrugated double bottle carriers are available in natural kraft and white kraft, and are specially designed to fit most 750ml wine bottles. Carriers have a convenient built in handle slot on the back for easy carrying, and a front window feature which stylishly exposes your wine labels. The built in divider separates the glass bottles for added protection. Ink print personalization is available on front and side gussets.

### Corrugated Double Bottle Carryall - WHITE & KRAFT

| Stock #                         | Size LxWxH                               | Case Pack |
|---------------------------------|--|-----------|
| BXDOUBLE CARRYALL KRAFT PLAIN   | 6 <sup>1/4</sup> x 3 <sup>1/4</sup> x 15 | 50        |
| BXDOUBLE CARRYALL KRAFT PRINTED | 6 <sup>1/4</sup> x 3 <sup>1/4</sup> x 15 | 50        |
| BXDOUBLE CARRYALL WHITE PLAIN   | 6 <sup>1/4</sup> x 3 <sup>1/4</sup> x 15 | 50        |
| BXDOUBLE CARRYALL WHITE PRINTED | 6 <sup>1/4</sup> x 3 <sup>1/4</sup> x 15 | 50        |

**In Stock Colors available:** Kraft, White

Corrugated Double Carryall Carrier holds 2 bottles of wine.

Printed pricing includes a one color front side print or one color left and right gusset side print.



50 box minimum for imprinted boxes



Sampler Boxes and Corrugated Beer/Wine Carriers are recyclable.

## Candy Boxes - CONTEMPORARY AND ONE PIECE AUTOMATIC STYLES

Available in two box styles and many popular colors, our candy boxes are available in many sizes to accommodate a range of confectionery sizes. From a petite two piece truffle size to a 3 lb. box size, we have a size to fit your packaging needs. Our contemporary ballotin style boxes feature a tapered bottom for a modern and distinctive look. Imprinted with your logo or tied with imprinted ribbon, these boxes make for a lovely presentation.



### Contemporary (Ballotin Style) Candy Boxes - WHITE GLOSS & NATURAL KRAFT

| Stock # |               | Size LxWxH   | Case Pack |
|---------|---------------|--|-----------|
| CB2TRUF | 2 pc Truffle. | 2 <sup>3/4</sup> x 1 <sup>3/8</sup> x 1 <sup>1/4</sup> | 100       |
| CB4TRUF | 4 pc Truffle  | 2 <sup>5/8</sup> x 2 <sup>1/2</sup> x 1 <sup>1/4</sup> | 100       |
| CB14BAL | 1/4 lb.       | 4 x 2 <sup>1/2</sup> x 1 <sup>7/8</sup>                | 100       |
| CB12BAL | 1/2 lb.       | 5 <sup>7/8</sup> x 3 <sup>1/4</sup> x 2 <sup>1/2</sup> | 100       |
| CB1BAL  | 1 lb.         | 6 <sup>5/8</sup> x 3 <sup>3/4</sup> x 3 <sup>1/2</sup> | 100       |

### One Piece Automatic Style Candy Boxes - WHITE GLOSS & NATURAL KRAFT

| Stock # |                      | Size LxWxH   | Case Pack |
|---------|----------------------|--|-----------|
| CB14    | 1/4 lb.              | 4 <sup>1/2</sup> x 2 <sup>1/2</sup> x 1 <sup>1/2</sup> | 100       |
| CB12    | 1/2 lb.              | 5 <sup>1/2</sup> x 2 <sup>3/4</sup> x 1 <sup>3/4</sup> | 100       |
| CB1     | 1 lb.                | 7 <sup>1/8</sup> x 3 <sup>1/4</sup> x 1 <sup>7/8</sup> | 100       |
| CB112*  | 1 <sup>1/2</sup> lb. | 7 x 4 <sup>1/2</sup> x 2                               | 100       |
| CB2     | 2 lb.                | 9 x 4 x 2 <sup>3/8</sup>                               | 100       |
| CB3**   | 3 lb.                | 10 x 5 x 2 <sup>3/4</sup>                              | 100       |

\*CB112 is available made to order with a 500 box minimum.

\*\*CB3 is available in stock in White Gloss only

### Contemporary (Ballotin Style) Candy Boxes - COLORS

| Stock #  |               | Size LxWxH   | Case Pack |
|----------|---------------|--|-----------|
| CB2TRUF  | 2 pc Truffle. | 2 <sup>3/4</sup> x 1 <sup>3/8</sup> x 1 <sup>1/4</sup> | 100       |
| CB4TRUF  | 4 pc Truffle  | 2 <sup>5/8</sup> x 2 <sup>1/2</sup> x 1 <sup>1/4</sup> | 100       |
| CB14BAL* | 1/4 lb.       | 4 x 2 <sup>1/2</sup> x 1 <sup>7/8</sup>                | 100       |
| CB12BAL* | 1/2 lb.       | 5 <sup>7/8</sup> x 3 <sup>1/4</sup> x 2 <sup>1/2</sup> | 100       |
| CB1BAL*  | 1 lb.         | 6 <sup>5/8</sup> x 3 <sup>3/4</sup> x 3 <sup>1/2</sup> | 100       |

**In Stock Gloss Colors on White available:** Black, Burgundy, Chocolate, Dartmouth Green, Ivory, Red  
**In Stock Matte Colors on Kraft available:** Matte Chocolate

**Note:** \*CB14BAL, \*CB12BAL, \*CB1BAL sizes available in White, Natural Kraft, Chocolate Gloss & Matte Chocolate only (limited stock available in select colors - Gloss Black, Gloss Chocolate, Gloss Dartmouth Green, Gloss Red, Matte Chocolate - call for availability).

### One Piece Automatic Style Candy Boxes - COLORS

| Stock # |                      | Size LxWxH   | Case Pack |
|---------|----------------------|--|-----------|
| CB14    | 1/4 lb.              | 4 <sup>1/2</sup> x 2 <sup>1/2</sup> x 1 <sup>1/2</sup> | 100       |
| CB12    | 1/2 lb.              | 5 <sup>1/2</sup> x 2 <sup>3/4</sup> x 1 <sup>3/4</sup> | 100       |
| CB1     | 1 lb.                | 7 <sup>1/8</sup> x 3 <sup>1/4</sup> x 1 <sup>7/8</sup> | 100       |
| CB112*  | 1 <sup>1/2</sup> lb. | 7 x 4 <sup>1/2</sup> x 2                               | 100       |
| CB2     | 2 lb.                | 9 x 4 x 2 <sup>3/8</sup>                               | 100       |
| CB3**   | 3 lb.                | 10 x 5 x 2 <sup>3/4</sup>                              | 100       |

**In Stock Gloss Colors on White available:** Black, Burgundy, Chocolate, Dartmouth Green, Ivory, Red

\*CB112 size is available made to order with a 500 box minimum

\*\*CB3 size is available made to order with a 500 box minimum



**Note:** Standard box colors available made to order with a 500 box minimum per size for all box sizes except CB2TRUF and CB4TRUF which require a 2500 box minimum per size. Custom colors are available made to order with a 2500 box minimum assorted sizes and with a 500 box minimum per size. Allow 4-6 weeks for delivery.

One case minimum for imprinted boxes



Refer to page 48 for standard box color program



All boxes are manufactured with 100% recycled materials. Our natural kraft boxes contain 100% post-consumer fibers. All boxes are tinted using water based inks and are recyclable.

# SPECIALTY BOXES | Candy Boxes



## Candy Boxes - WINDOW STYLE

Showcase your delicious truffles and fine chocolates in our candy boxes with windows. Add your name and logo and your customers will be left with a lasting impression long after the candy is gone.

### Window Style One Piece Automatic Candy Boxes - WHITE GLOSS

| Stock # |                      | Size LxWxH   | Case Pack |
|---------|----------------------|--|-----------|
| CB12W   | 1/2 lb.              | 5 <sup>1/2</sup> x 2 <sup>3/4</sup> x 1 <sup>3/4</sup> | 100       |
| CB1W    | 1 lb.                | 7 <sup>1/8</sup> x 3 <sup>1/4</sup> x 1 <sup>7/8</sup> | 100       |
| CB112W* | 1 <sup>1/2</sup> lb. | 7 x 4 <sup>1/2</sup> x 2                               | 100       |
| CB2W    | 2 lb.                | 9 x 4 x 2 <sup>3/8</sup>                               | 100       |

\*CB112W available made to order only with 500 box minimum.



**In Stock Gloss Colors available:** White  
 Limited stock in select colors - Gloss Burgundy, Gloss Dartmouth Green, Gloss Red - call for color availability.

### Window Style Candy Boxes - RECTANGULAR

| Stock #         | Size LxWxH   | Case Pack |
|-----------------|--|-----------|
| CBFL711W White  | 7 <sup>3/4</sup> x 1 <sup>5/8</sup> x 1 <sup>5/8</sup> | 100       |
| CBFL711W Colors | 7 <sup>3/4</sup> x 1 <sup>5/8</sup> x 1 <sup>5/8</sup> | 100       |



**In Stock Gloss Colors available:** White  
 Limited stock in select colors - Gloss Burgundy, Gloss Red - call for color availability.  
 Standard colors are available made to order with a 500 box minimum per size.  
 Custom colors are available made to order with a 2500 box minimum assorted sizes and with a 500 box minimum per size.

### Two Piece Sleeve Style Macaroon Boxes WHITE GLOSS/NATURAL KRAFT

| Stock #                          | Size LxWxH                              | Case Pack |
|----------------------------------|---|-----------|
| ABFSMACARON6/SLEEVE WHITE        | 6 <sup>1/4</sup> x 2 <sup>1/4</sup> x 2 | 100       |
| ABFSMACARON6/SLEEVE WHITE WINDOW | 6 <sup>1/4</sup> x 2 <sup>1/4</sup> x 2 | 100       |
| ABFSMACARON6/SLEEVE KRAFT        | 6 <sup>1/4</sup> x 2 <sup>1/4</sup> x 2 | 100       |
| ABFSMACARON6/SLEEVE KRAFT WINDOW | 6 <sup>1/4</sup> x 2 <sup>1/4</sup> x 2 | 100       |

### Two Piece Sleeve Style Macaroon Boxes COLORS

| Stock #                          | Size LxWxH                              | Case Pack |
|----------------------------------|---|-----------|
| ABFSMACARON6/SLEEVE COLOR        | 6 <sup>1/4</sup> x 2 <sup>1/4</sup> x 2 | 100       |
| ABFSMACARON6/SLEEVE COLOR WINDOW | 6 <sup>1/4</sup> x 2 <sup>1/4</sup> x 2 | 100       |



**In Stock Gloss Colors available:** Natural Kraft, White  
 Standard colors are available made to order with a 1000 box minimum per size.  
**Note:** Top and bottom color must be matching color. For contrasting lid/sleeve colors or colored box interiors - please call for pricing and minimums.  
 Allow 4-6 weeks for delivery.

All boxes are manufactured with 100% recycled materials. Our natural kraft boxes contain 100% post-consumer fibers. All boxes are tinted using water based inks and are recyclable.

## Macaroon Boxes

Showcase your colorful macaroons in our new drawer style macaroon boxes designed to hold six macaroons. Boxes feature a sleeve lid that is available plain or with a circular window to fancifully display treats. White gloss and natural kraft are available in stock or customize with color. Sleeves and bases can be made in matching or contrasting colors and interiors can be color tinted for an added upcharge. Customize with your brand messaging or logo!



One case minimum for imprinted boxes



# SPECIALTY BOXES | Candy Bags & Boxes

## Candy Boxes - FOLDING SET UP STYLE

Imprint our striking two piece folding set-up candy boxes with your store name or logo and you will add a touch of elegance and sophistication that your customers will be sure to think of each time they purchase candy for a special event.



### Candy Boxes - FOLDING SET UP

| Stock #       | Size LxWxH   | Case Pack |
|---------------|--|-----------|
| CBFS12 WHITE  | 1/2 lb. 7 <sup>1/8</sup> x 4 <sup>1/2</sup> x 1 <sup>1/4</sup> | 100       |
| CBFS12 COLORS | 1/2 lb. 7 <sup>1/8</sup> x 4 <sup>1/2</sup> x 1 <sup>1/4</sup> | 100       |
| CBFS1 WHITE   | 1 lb. 9 <sup>5/8</sup> x 6 x 1 <sup>1/4</sup>                  | 100       |
| CBFS1 COLORS  | 1 lb. 9 <sup>5/8</sup> x 6 x 1 <sup>1/4</sup>                  | 100       |
| CBFS2 WHITE   | 2 lb. 9 <sup>5/8</sup> x 6 x 2                                 | 100       |
| CBFS2 COLORS  | 2 lb. 9 <sup>5/8</sup> x 6 x 2                                 | 100       |



In Stock Gloss Colors available: White

Limited stock in select colors Gloss Burgundy, Gloss Dartmouth Green, Gloss Red - call for color availability.

Standard colors available made to order with a 500 box minimum per size. Custom colors are available made to order with a 2500 box minimum, assorted sizes and with a 500 box minimum per size.

One case minimum for imprinted boxes



### (Bandelette) Candy Bags - STRIPED HARD BOTTOM

| Stock # | Size LxWxH  | Case Pack |
|---------|---|-----------|
| CW2     | 1 <sup>3/4</sup> x 1 <sup>3/4</sup> x 8 <sup>1/2</sup>  | 100       |
| CW4     | 2 <sup>3/4</sup> x 1 <sup>7/8</sup> x 10 <sup>1/8</sup> | 100       |
| CW6     | 3 <sup>1/4</sup> x 2 x 12                               | 100       |

In Stock Colors available: \*Blue Stripe, \*Gold Stripe, Green Stripe, \*Red Stripe, Silver Stripe

\*Limited stock - call for availability

### Candy Bags - CLEAR HARD BOTTOM

| Stock # | Size LxWxH  | Case Pack |
|---------|---|-----------|
| CW2     | 1 <sup>3/4</sup> x 1 <sup>3/4</sup> x 8 <sup>1/2</sup>  | 100       |
| CW4     | 2 <sup>3/4</sup> x 1 <sup>7/8</sup> x 10 <sup>1/8</sup> | 100       |
| CW6     | 3 <sup>1/4</sup> x 2 x 12                               | 100       |
| CW8     | 4 x 2 <sup>1/2</sup> x 13                               | 100       |



All boxes are manufactured with 100% recycled materials. Our natural kraft boxes contain 100% post-consumer fibers. All boxes are tinted using water based inks and are recyclable.

## Candy Boxes - ONE PIECE FOLDING STYLE

Package your candy in our easy to assemble and stylish one piece folding style candy boxes. Featured below are metallic candy boxes produced using our exclusive gold and silver inks, lending a rich luster not found in foil covered boxes. By imprinting with your store logo, your name becomes the definition of good taste.



### Candy Boxes - ONE PIECE FOLDING

| Stock #          | Size LxWxH   | Case Pack |
|------------------|--|-----------|
| CBFL14 White     | 1/4 lb. 4 <sup>1/2</sup> x 3 <sup>1/2</sup> x 1 <sup>1/4</sup> | 100       |
| CBFL14 Colors    | 1/4 lb. 4 <sup>1/2</sup> x 3 <sup>1/2</sup> x 1 <sup>1/4</sup> | 100       |
| CBFL14 Metallics | 1/4 lb. 4 <sup>1/2</sup> x 3 <sup>1/2</sup> x 1 <sup>1/4</sup> | 100       |
| CBFL12 White     | 1/2 lb. 5 <sup>1/2</sup> x 2 <sup>3/4</sup> x 1 <sup>3/4</sup> | 100       |
| CBFL12 Colors    | 1/2 lb. 5 <sup>1/2</sup> x 2 <sup>3/4</sup> x 1 <sup>3/4</sup> | 100       |
| CBFL12 Metallics | 1/2 lb. 5 <sup>1/2</sup> x 2 <sup>3/4</sup> x 1 <sup>3/4</sup> | 100       |
| CBFL1 White      | 1 lb. 7 <sup>1/4</sup> x 3 <sup>1/4</sup> x 1 <sup>3/4</sup>   | 100       |
| CBFL1 Colors     | 1 lb. 7 <sup>1/4</sup> x 3 <sup>1/4</sup> x 1 <sup>3/4</sup>   | 100       |
| CBFL1 Metallics  | 1 lb. 7 <sup>1/4</sup> x 3 <sup>1/4</sup> x 1 <sup>3/4</sup>   | 100       |

In Stock Colors available: Special Gold, Special Silver

White Gloss One Piece Folding Candy boxes are available made to order with a 200 box minimum per size.

Standard colors are available made to order with a 500 box minimum per size.

Custom colors are available made to order with a 2500 box minimum, assorted sizes and with a 500 box minimum per size.



### Window Style Candy Boxes - ONE PIECE FOLDING

| Stock #        | Size LxWxH   | Case Pack |
|----------------|--|-----------|
| CBFL14W White  | 1/4 lb. 4 <sup>1/2</sup> x 3 <sup>1/2</sup> x 1 <sup>1/4</sup> | 100       |
| CBFL14W Colors | 1/4 lb. 4 <sup>1/2</sup> x 3 <sup>1/2</sup> x 1 <sup>1/4</sup> | 100       |

In Stock Colors available: White

Standard colors are available made to order with a 1000 box minimum.



### Candy Bags - METALLIC TWIST

| Stock #   | Size | Case Pack |
|-----------|------|-----------|
| TWISTTIE  | 4"   | 500       |
| TWISTBOWS | 3"   | 100       |

In Stock Colors available in 4" Ties: Gold, Green, Red, Silver

In Stock Colors available in Ties with Pre-Tied Bow: Burgundy, Gold, Silver

# ACCESSORIES | Tissue Paper

## Tissue Paper - WHITE, NATURAL KRAFT AND COLORS

No package is truly complete without adding tissue. With our vast assortment of colors, finding one, or combining several, to coordinate with your store's image will be a breeze.

### Tissue Paper - WHITE & KRAFT (PREMIUM)

| Stock #  | Size    | Type        |
|----------|---------|-------------|
| CTSW WHT | 20 x 30 | SINGLE REAM |
| CT20 WHT | 20 x 30 | DOUBLE REAM |
| SW KRAFT | 20 x 30 | DOUBLE REAM |

\*480 sheets per single ream - 20 x 30 sheets

\*960 sheets per double ream - 20 x 30 sheets

Tissue can be cut to 15 x 20 at no charge, additional slits will incur a \$5.00 slit charge, per slit.



### Tissue Paper - SATIN WRAP SOLID COLORS

| Stock # | Size    | Type        |
|---------|---------|-------------|
| SW      | 20 x 30 | SINGLE REAM |

**Colors available:** Aloe, Apple Green, Apricot, Aquamarine, Black, Blush, Boysenberry, Bright Turquoise, Brown, Buttercup, Burnt Orange, Cabernet, Caribbean Blue, Cerise, Cherry Red, Cinnamon, Citrus Green, Claret, \*Cobalt Blue, Cool Gray, Cool Mint, Coral, \*Cornflower, Dark Pink, Eggplant, Evergreen, Fiesta Blue, Flamingo, French Vanilla, Goldenrod, Green Tea, Harvest Gold, Holiday Green, Honeysuckle, Island Pink, Ivory, Kelly Green, Khaki, Lavender, Light Blue, Light Gray, Light Pink, Lilac, Limon, Mandarin Red, Midnight Blue, Mocha\*, Mulberry, Olive, Orange, Pansy, Pacific Blue, Parade Blue, Peach, Peacock, Pistachio, Plum, Purple, Raspberry, Raw Sienna, Recycled Kraft, Sandstone, Scarlet, Sky Blue, Slate Gray, Tan, Taupe, Teal, Turquoise, Willow, Yellow.

\*Note: Limited Quantities available. \*\*480 sheets per ream. Tissue can be cut to 15 x 20 at no charge.

### Tissue Paper - SOLID ASSORTMENT PACKS

| Stock #                  | Size    |
|--------------------------|---------|
| MEDLEY ASST./480 sheets  | 20 x 30 |
| POPULAR ASST./480 sheets | 20 x 30 |
| SPRING ASST./480 sheets  | 20 x 30 |

**Popular Pack - 24 Sheets/Color:** Scarlet, Holiday Green, Lavender, Purple, French Vanilla, Cerise, Black, Parade Blue, Dark Pink, Yellow, Buttercup, Evergreen, Cabernet, Light Blue, Citrus Green, Mandarin Red, Turquoise, White, Orange, and Tan

**Spring Pack - 96 Sheets/Color:** Light Pink, Light Blue, Yellow, Lavender, Peach

**Medley Mix - 480 Sheets:** 12 assorted colors.

### Tissue Paper - PATTERNED ASSORTMENT PACKS

| Stock #                          | Size    |
|----------------------------------|---------|
| SW BLACK/WHITE ASSTPK/240 sheets | 20 x 30 |
| SW ROSEGOLD ASSTPK/200 sheets    | 20 x 30 |

\*\*Black/White assortment includes 80 sheets each of Black Dots on White (#341), Black Stripes on White (#343) and White Dots on Black (#342)

\*\*Rose Gold assortment includes 50 sheets each of Rose Gold Gemstone on Blush, Rose Gold Metallic, Rose Gold Gemstone on White and Blush (solid colored tissue)

### Tissue Paper - NEWSPRINT

| Stock # | Size    |
|---------|---------|
| NPWHT   | 24 x 36 |

\*Newsprint Tissue can be slit at \$5.00 per package

### Tissue Paper - GRADE A WHITE (ECONOMY)

| Stock #  | Size    | Type        |
|----------|---------|-------------|
| GASR WHT | 20 x 30 | SINGLE REAM |
| GA30 WHT | 20 x 30 | DOUBLE REAM |

\*1000 sheets per double ream - 20 x 30 sheets



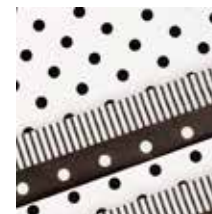
Medley Assortment



Popular Assortment



Spring Assortment



Black/White Assortment



Rose Gold Assortment



White and recycled kraft tissue contain 70% post-industrial fibers, 10% post consumer fibers and 20% virgin fibers. Satin Wrap colors contain recycled content that vary by color.

# FOOD SERVICE | Pastry Boxes

## Pastry Boxes - WHITE GLOSS AND NATURAL KRAFT

Available in one piece folding style and two piece premier line style, our pastry boxes are an ideal way to package your baked goods. Our premier line two piece folding set-up box is perfect for cakes - the base is a lock corner box that allows you to easily slide the cake in and out without ruining the decorative frosting. We also offer our one piece style with a window, allowing you to display your fine cakes, pies, and pastries.

### Premier Line Pastry Boxes - WHITE GLOSS

| Stock #   | Size LxWxH   | Case Pack |
|-----------|--|-----------|
| ABFS662   | 6 x 6 x 2 Lid  | 100       |
| PXB664    | 6 x 6 x 4 Base   | 100       |
| PXB666    | 6 x 6 x 6 Base   | 100       |
| PXB669    | 6 x 6 x 9 Base   | 50        |
| ABFS10102 | 10 <sup>1/2</sup> x 10 <sup>1/2</sup> x 2 <sup>1/2</sup> Lid | 100       |
| GBB10105  | 10 <sup>1/2</sup> x 10 <sup>1/2</sup> x 5 Base               | 50        |
| GBB10108  | 10 <sup>1/2</sup> x 10 <sup>1/2</sup> x 8 Base               | 50        |
| ABFS12122 | 12 x 12 x 2 <sup>3/4</sup> Lid                               | 50        |
| GBB12125  | 12 x 12 x 5 <sup>1/2</sup> Base                              | 50        |
| GBB12128  | 12 x 12 x 8 Base   | 50        |
| GBB121212 | 12 x 12 x 12 Base  | 50        |
| ABFS14141 | 14 x 14 x 1 <sup>1/2</sup> Lid                               | 50        |
| ABFS14142 | 14 x 14 x 2 <sup>3/4</sup> Lid                               | 50        |
| GBB14142  | 14 x 14 x 2 Base   | 50        |
| GBB14145  | 14 x 14 x 5 Base   | 50        |
| GBB14147  | 14 x 14 x 7 Base   | 50        |
| GBB14149  | 14 x 14 x 9 Base   | 50        |

PXB denotes a tuck-it style base

GBB denotes a lock corner style base

In Stock Colors available: White Gloss

Standard and custom colors are available made to order with a 1250 box or 2500 piece assorted sizes, 200 per size



### Window Style Pastry Boxes - WHITE GLOSS

| Stock #  | Size LxWxH                              | Case Pack |
|----------|---|-----------|
| BK664W   | 6 x 6 x 4                               | 100       |
| BK884W   | 8 <sup>1/2</sup> x 8 <sup>1/2</sup> x 4 | 100       |
| BK10104W | 10 x 10 x 4                             | 100       |
| BK12123W | 12 x 12 x 3 <sup>1/4</sup>              | 50        |

In Stock Colors available: White Gloss

All above boxes are One piece folding style

White bakery boxes have a white gloss exterior and matte white interior

One case minimum for imprinted boxes



### Pastry Boxes - WHITE GLOSS & NATURAL KRAFT

| Stock #  | Size LxWxH   | Case Pack |
|----------|--|-----------|
| BK663*   | 6 x 6 x 3  | 100       |
| BK664*   | 6 x 6 x 4  | 100       |
| BK853    | 8 x 5 x 3  | 100       |
| BK883*   | 8 <sup>1/2</sup> x 8 <sup>1/2</sup> x 3 <sup>1/4</sup> | 100       |
| BK884*   | 8 x 8 x 4  | 100       |
| BK885    | 8 x 8 x 5  | 100       |
| BK993    | 9 x 9 x 3 <sup>3/4</sup>                               | 100       |
| BK995    | 9 <sup>1/2</sup> x 9 <sup>1/2</sup> x 5                | 100       |
| BK1063   | 10 x 6 x 3 <sup>1/4</sup>                              | 100       |
| BK10103* | 10 x 10 x 3  | 100       |
| BK10104  | 10 x 10 x 4  | 100       |
| BK10105  | 10 x 10 x 4 <sup>1/2</sup>                             | 100       |
| BK10106  | 10 x 10 x 6  | 50        |
| BK12123  | 12 x 12 x 3 <sup>1/4</sup>                             | 50        |
| BK12125  | 12 x 12 x 5  | 50        |
| BK14104  | 14 x 10 x 4  | 50        |

In Stock Colors available: White Gloss and Natural Kraft\*

\*Natural Kraft available in limited sizes only - all other sizes available with a 500 box minimum

All above boxes are One piece folding style

White bakery boxes have a white gloss exterior and matte white interior

### One Piece Folding Pastry Boxes - WHITE GLOSS

| Stock #   | Size LxWxH  | Case Pack |
|-----------|-------------|-----------|
| BKFL19143 | 19 x 14 x 3 | 25        |
| BKFL19145 | 19 x 14 x 5 | 25        |

In Stock Colors available: White Gloss

**WE RECOMMEND USING FDA APPROVED WAXED TISSUE WITH PASTRY BOXES**



All boxes are manufactured with 100% recycled materials. Our natural kraft boxes contain 100% post-consumer fibers. All boxes are tinted using water based inks and are recyclable.



## Pastry Boxes - COLORS

Make your packaging stand out with a colored pastry box - branded with your logo. Whether you choose one of our standard box colors or your very own custom color - your packaging is sure to be noticed!



One case minimum for imprinted boxes



All boxes are manufactured with 100% recycled materials. Our natural kraft boxes contain 100% post-consumer fibers. All boxes are tinted using water based inks and are recyclable.

## Pastry Boxes - COLORS

| Stock # | Size LxWxH            | Case Pack |
|---------|-----------------------|-----------|
| BK663   | 6 x 6 x 3             | 100       |
| BK664   | 6 x 6 x 4             | 100       |
| BK853   | 8 x 5 x 3             | 100       |
| BK883   | 8 1/2 x 8 1/2 x 3 1/4 | 100       |
| BK884   | 8 x 8 x 4             | 100       |
| BK885   | 8 x 8 x 5             | 100       |
| BK993   | 9 x 9 x 3 3/4         | 100       |
| BK995   | 9 1/2 x 9 1/2 x 5     | 100       |
| BK1063  | 10 x 6 x 3 1/4        | 100       |
| BK10103 | 10 x 10 x 3           | 100       |
| BK10104 | 10 x 10 x 4           | 100       |
| BK10105 | 10 x 10 x 4 1/2       | 100       |
| BK10106 | 10 x 10 x 6           | 50        |
| BK12123 | 12 x 12 x 3 1/4       | 50        |
| BK12125 | 12 x 12 x 5           | 50        |
| BK14104 | 14 x 10 x 4           | 50        |

## One Piece Folding Pastry Boxes - COLORS

| Stock #   | Size LxWxH  | Case Pack |
|-----------|-------------|-----------|
| BKFL19143 | 19 x 14 x 3 | 25        |
| BKFL19145 | 19 x 14 x 5 | 25        |

All above boxes are One piece folding style. Standard colors available made to order with a 500 box minimum assorted sizes, 200 per size. Custom colors are available with a 2500 box minimum assorted sizes, 200 per size with an additional ink charge of \$185.00.

## FOOD SERVICE WAX TISSUE

Our high performance FDA approved waxed tissue is available in a 15/18# dry waxed grade and is perfect for lining food service boxes, baskets and trays. Choose from an assortment of colors or our new red lobster pattern. Our solid waxed tissues are conveniently packaged in an interfold dispenser box.

### FDA Approved Dry Waxed Tissue

| Stock #   | Sheet Size | Packaging     | Grade & Type                  | Sheets Per Disp. Box |
|-----------|------------|---------------|-------------------------------|----------------------|
| FSSW 1212 | 12 x 12    | Interfold Box | High Performance Colors Waxed | 1000                 |
| FSSW 1212 | 12 x 12    | Interfold Box | High Performance White Waxed  | 1000                 |
| FSSW 1212 | 12 x 12    | Interfold Box | Kraft Unwaxed Menu Tissue     | 1000                 |

| Stock #   | Sheet Size | Packaging    | Grade & Type                       | Sheets/Package |
|-----------|------------|--------------|------------------------------------|----------------|
| FSSW 1212 | 12 x 12    | Poly Wrapped | High Performance Red Lobster Waxed | 1000           |



**In Stock Colors available:** Bay Leaf, Caramel, Cherry, Cinnamon, Cream, Grape, Kraft, White

**In Stock Pattern available:** *New!* Red Lobster

**Note:** High Performance Colors and White tissue is a high performance 15/18# dry wax tissue. Kraft tissue is a 10.5# wet strength unwaxed menu tissue



**WE RECOMMEND USING FDA APPROVED WAXED TISSUE WITH PASTRY BOXES**



## Cupcake Boxes - WHITE GLOSS, NATURAL KRAFT AND COLORS

Package your cupcakes in our trendy cupcake boxes available in window and non-window styles. Boxes come in one, two, four, six and twelve piece styles. Select from our in-stock white and natural kraft or choose a colored box to create a complete coordinated bakery packaging program! All cupcake boxes include white or natural kraft inserts to safely hold your treats.

- CK444 - 1 CUPCAKE
- CK854 - 2 CUPCAKES
- CK884 - 4 CUPCAKES
- CK10104 - 6 CUPCAKES
- CK14104 - 12 CUPCAKES
- CK444H - 1 CUPCAKE W/HANDLE

Price includes White or Kraft insert.

**In Stock Colors available:** White and Natural Kraft boxes with and without a window  
Box window is made of 2 mil polypropylene film.

Standard colors are available made to order with a 500 box minimum assorted sizes, 200 per size.  
Custom colors are available made to order with a 2500 box minimum assorted sizes, 200 per size.  
Allow 4-6 weeks for delivery after proof approval.

Note: Board colors vary based on box color between white and natural kraft.

One case minimum for imprinted boxes



**WE RECOMMEND USING FDA APPROVED WAXED TISSUE WITH PASTRY BOXES**



All boxes are manufactured with 100% recycled materials. Our natural kraft boxes contain 100% post-consumer fibers. All boxes are tinted using water based inks and are recyclable.

## Cupcake Boxes - NON WINDOW STYLE

| Stock #         | Size LxWxH  | Case Pack |
|-----------------|-------------|-----------|
| CK444 WHT/NAT   | 4 x 4 x 4   | 100       |
| CK444 COLOR     | 4 x 4 x 4   | 100       |
| CK854 WHT/NAT   | 8 x 5 x 4   | 100       |
| CK854 COLOR     | 8 x 5 x 4   | 100       |
| CK884 WHT/NAT   | 8 x 8 x 4   | 100       |
| CK884 COLOR     | 8 x 8 x 4   | 100       |
| CK10104 WHT/NAT | 10 x 10 x 4 | 100       |
| CK10104 COLOR   | 10 x 10 x 4 | 100       |
| CK14104 WHT/NAT | 14 x 10 x 4 | 50        |
| CK14104 COLOR   | 14 x 10 x 4 | 50        |

## Cupcake Boxes - ROUND WINDOW STYLE

| Stock #        | Size LxWxH | Case Pack |
|----------------|------------|-----------|
| CK854W WHT/NAT | 8 x 5 x 4  | 100       |
| CK854W COLOR   | 8 x 5 x 4  | 100       |
| CK884W WHT/NAT | 8 x 8 x 4  | 100       |
| CK884W COLOR   | 8 x 8 x 4  | 100       |

## Cupcake Boxes - SQUARE WINDOW STYLE

| Stock #          | Size LxWxH  | Case Pack |
|------------------|-------------|-----------|
| CK444W WHT/NAT   | 4 x 4 x 4   | 100       |
| CK444W COLOR     | 4 x 4 x 4   | 100       |
| CK10104W WHT/NAT | 10 x 10 x 4 | 100       |
| CK10104W COLOR   | 10 x 10 x 4 | 100       |
| CK14104W WHT/NAT | 14 x 10 x 4 | 50        |
| CK14104W COLOR   | 14 x 10 x 4 | 50        |

\*CK444W has a window on the front of the box

## Cupcake Boxes - HANDLE STYLE

| Stock #         | Size LxWxH | Case Pack |
|-----------------|------------|-----------|
| CK444H WHT/NAT  | 4 x 4 x 4  | 100       |
| CK444H COLOR    | 4 x 4 x 4  | 100       |
| CK444HW WHT/NAT | 4 x 4 x 4  | 100       |
| CK444HW COLOR   | 4 x 4 x 4  | 100       |

\*CK444HW has a window on the front of the box



Choose from a wide selection of quality packaging products designed for the confectionary, gourmet food, gift basket and gift industries. We have an extensive selection of gourmet boxes such as gable boxes, tulip boxes, wine boxes and carriers, candy boxes, cupcake and bakery boxes and many other styles. Boxes are available in a range of in stock colors like basic white gloss, elegant metallic silver and gold or we can produce a custom color that is unique just to you. We can even add an elegant hot stamp foil or four color process print to enhance your brand presentation.



# FOOD SERVICE | Cups

## Cups - CLEAR PLASTIC

Reinforce your brand identity every time your customers reach for a beverage. With our low imprint quantity minimums, our clear plastic cups are an affordable and convenient way to promote your store, café or restaurant.

### Cups - CLEAR PLASTIC

| Stock #     | Size   | Case Pack |
|-------------|--------|-----------|
| FSC12 CLEAR | 12 oz. | 1000      |
| FSC16 CLEAR | 16 oz. | 1000      |
| FSC20 CLEAR | 20 oz. | 1000      |
| FSC24 CLEAR | 24 oz. | 600       |

\*Pricing includes a one color, one side ink imprint.

## Cups - WHITE HOT PAPER & INSULATED

With many sizes to choose from and our low imprint quantity minimums, our white hot and white insulated paper cups are a perfect walking advertisement for your business. Choose from several lid styles for your customer's convenience.



One case minimum for imprinted Cups



### Lids - CLEAR PLASTIC DOME & STRAW SLOT

| Stock #  | Style      | For Use With   | Case Pack |
|----------|------------|----------------|-----------|
| FSL662TS | STRAW SLOT | 12 oz.         | 1000      |
| FSL626TS | STRAW SLOT | 16, 20, 24 oz. | 1000      |
| FSLDL662 | DOME LID   | 12 oz.         | 1000      |
| FSLDL626 | DOME LID   | 16, 20, 24 oz. | 1000      |

Straw Slot Lid - clear lid with slot opening for straw.  
Dome Lid - clear dome shaped lid with hole.

### Cups - WHITE INSULATED

| Stock #      | Size   | Case Pack |
|--------------|--------|-----------|
| FSCSDR12 WHT | 12 oz. | 600       |
| FSCSDR16 WHT | 16 oz. | 600       |
| FSCSDR20 WHT | 20 oz. | 600       |

\*Pricing includes a one color, one side ink imprint.

### Lids - WHITE DOME SIP LID

| Stock #      | Style              | For Use With  | Case Pack |
|--------------|--------------------|---------------|-----------|
| FSLHDD16 WHT | White Dome Sip Lid | 12,16, 20 oz. | 1200      |

### Cups - WHITE HOT PAPER

| Stock #      | Size   | Case Pack |
|--------------|--------|-----------|
| FSCSMR4 WHT  | 4 oz.  | 1000      |
| FSCSMR8 WHT  | 8 oz.  | 1000      |
| FSCSMR10 WHT | 10 oz. | 1000      |
| FSCSMR12 WHT | 12 oz. | 1000      |
| FSCSMR16 WHT | 16 oz. | 1000      |
| FSCSMR20 WHT | 20 oz. | 800       |

\*Pricing includes a one color, one side ink imprint. Call for details.

### Lids - WHITE/BLACK DOME & LOCK BACK

| Stock #         | Style                   | For Use With  | Case Pack |
|-----------------|-------------------------|---------------|-----------|
| FSLHRDSB8 BLCK  | Black Dome Sip Lid      | 8 oz.         | 1000      |
| FSLHRDSB10 BLCK | Black Dome Sip Lid      | 10 oz.        | 1200      |
| FSLHRDSB16 BLCK | Black Dome Sip Lid      | 12,16, 20 oz. | 1200      |
| FSLHRDS8 WHT    | White Dome Sip Lid      | 8 oz.         | 1000      |
| FSLHRDS10 WHT   | White Dome Sip Lid      | 10 oz.        | 1200      |
| FSLHRDS16 WHT   | White Dome Sip Lid      | 12,16, 20 oz. | 1200      |
| FSLHRL10 WHT    | White Lock Back Sip Lid | 10 oz.        | 1000      |
| FSLHRL16 WHT    | White Lock Back Sip Lid | 12,16, 20 oz. | 1000      |

## Cups - FOAM

Keep several sizes of foam cups on hand and with each cup of coffee served, you strengthen your business image.

### Cups - FOAM

| Stock #    | Size   | Case Pack |
|------------|--------|-----------|
| FSC8 FOAM  | 8 oz.  | 1000      |
| FSC10 FOAM | 10 oz. | 1000      |
| FSC12 FOAM | 12 oz. | 1000      |
| FSC16 FOAM | 16 oz. | 1000      |
| FSC20 FOAM | 20 oz. | 500       |

\*Pricing includes a one color, one side ink imprint.

### Lids - WHITE LOCK BACK

| Stock #        | For Use With  | Case Pack |
|----------------|---------------|-----------|
| FSL8FTL WHITE  | 8 oz.         | 1000      |
| FSL10FTL WHITE | 10 oz.        | 1000      |
| FSL16FTL WHITE | 12,16, 20 oz. | 1000      |

## Bowls - WHITE PAPER

These paper containers are terrific for either hot or cold food and can be imprinted in low quantity minimums. Lids are included with the paper bowls.



### Bowls - WHITE PAPER

| Stock #     | Size   | Case Pack |
|-------------|--------|-----------|
| FSB8 PAPER  | 8 oz.  | 250       |
| FSB12 PAPER | 12 oz. | 250       |
| FSB16 PAPER | 16 oz. | 250       |
| FSB32 PAPER | 32 oz. | 250       |

\*Pricing includes steam vent lids and a one color, one side ink imprint.



## Beverage Accessories - COFFEE CLUTCHES AND BOXES

Slip on a coffee clutch to safely carry your hot beverage or use a beverage on the move coffee box to carry 96 oz. to 160 oz. of hot coffee anywhere. Imprint with a café, store or restaurant logo to spread the word!



### Coffee Clutches - WHITE & KRAFT

| Stock # | Size  | Case Pack |
|---------|-------|-----------|
| CLUTCH  | KRAFT | 1200      |
| CLUTCH  | WHITE | 1200      |

\*Pricing includes a one color, one side ink imprint.

Note: Kraft Coffee Clutches have a groove texture.

### Beverage on the Move - KRAFT

| Stock # | Size   | Case Pack |
|---------|--------|-----------|
| FS96    | 96 oz. | 25        |

\*Pricing includes a one color, two side ink imprint. Call for details.

One case minimum for imprinted Food Service products



# FOOD SERVICE | Carry Out Boxes

## Carry Out Boxes - SLEEVE LUNCH

Package boxed lunches or bakery treats in our unique sleeve style lunch box. This two piece box style features a box sleeve which slides out revealing a box tray of goodies.



### Carry Out Boxes - SLEEVE LUNCH

| Stock #     | Size                      | Case Pack |
|-------------|---------------------------|-----------|
| LB1073 NKFT | 10 x 7 x 3 <sup>1/2</sup> | 250       |
| LB1073 WHT  | 10 x 7 x 3 <sup>1/2</sup> | 250       |

**Note:** White Gloss and Natural Kraft boxes are available made to order with a 250 box minimum. Standard colors are available made to order with a 500 box minimum. Custom colors are also available made to order - call for more information.

## Carry Out Boxes - TULIP

Perfect for bakery treats or other unique items, these specialty handle pouches have a unique shape that is sure to make them stand out no matter what's inside.



### Carry Out Boxes - TULIP

| Stock #           | Size LxWxH   | Case Pack |
|-------------------|--|-----------|
| TB111 White/Kraft | 1 <sup>1/2</sup> x 1 <sup>1/2</sup> x 1 <sup>1/2</sup> | 100       |
| TB111 Colors      | 1 <sup>1/2</sup> x 1 <sup>1/2</sup> x 1 <sup>1/2</sup> | 100       |
| TB222 White/Kraft | 2 x 2 x 2  | 100       |
| TB222 Colors      | 2 x 2 x 2  | 100       |
| TB333 White/Kraft | 3 x 3 x 3  | 100       |
| TB333 Colors      | 3 x 3 x 3  | 100       |
| TB444 White/Kraft | 4 <sup>1/2</sup> x 4 <sup>1/2</sup> x 4 <sup>1/2</sup> | 100       |
| TB444 Colors      | 4 <sup>1/2</sup> x 4 <sup>1/2</sup> x 4 <sup>1/2</sup> | 100       |
| TB555 White/Kraft | 5 <sup>1/2</sup> x 5 <sup>1/2</sup> x 5 <sup>1/2</sup> | 100       |
| TB555 Colors      | 5 <sup>1/2</sup> x 5 <sup>1/2</sup> x 5 <sup>1/2</sup> | 100       |
| TB777 White/Kraft | 7 x 7 x 7  | 100       |
| TB777 Colors      | 7 x 7 x 7  | 100       |

**In Stock Colors available:** Natural Kraft, White Gloss  
Standard colors are available made to order with a 500 box minimum per size.  
Custom colors are available made to order with a 2500 box minimum assorted sizes, 500 per size.

## Carry Out Boxes - T BOXES

Great for catering and meals on the go, the sleeve of the T-Box holds a 48 oz. Take out container while the box on the bottom holds cutlery, chips and a drink making any meal to go perfect.



### Carry Out Boxes - T BOXES

| Stock #      | Size   | Case Pack |
|--------------|--|-----------|
| TBOX WHT     | 9 x 3 <sup>1/8</sup> x 6 <sup>7/8</sup> x 10 | 100       |
| TBOX NAT     | 9 x 3 <sup>1/8</sup> x 6 <sup>7/8</sup> x 10 | 100       |
| TBOX COLORS* | 9 x 3 <sup>1/8</sup> x 6 <sup>7/8</sup> x 10 | 100       |

**Note:** Sleeve dimension measures 6<sup>7/8</sup> x 3<sup>1/8</sup>  
This is a made to order box with a 500 box minimum.  
Standard colors are available made to order with a 500 box minimum.

## Carry Out Boxes - GABLE

With their unique built in handle and many sizes to choose from, our Gable boxes are perfect for take outs, lunches or special occasion meals.



\*\*Please refer to page 79 for information on colors and pricing for Gable Boxes

One case minimum for imprinted boxes



All boxes are manufactured with 100% recycled materials. Our natural kraft boxes contain 100% post-consumer fibers. All boxes are tinted using water based inks and are recyclable.