



RETAIL PRICE LIST



JEWELRY BOXES • GIFT BOXES • APPAREL BOXES • BAKERY BOXES • FOOD SERVICE BOXES • CANDY BOXES

TABLE OF CONTENTS

RETAIL BOXES

Jewelry Boxes.....	3-7
Jewelry Boxes with Peachboard Platforms.....	6
Cotton	6
Set-up Mailing Boxes	6
VIEWit™ Boxes	7
Set-up Apparel Boxes	8
Pillow Packs	9
Pop-up Hat Boxes	9
Silverware Boxes	9
Gift Certificates	10
BOXit® Two-Piece Gift Boxes.....	11-13
TUCKit® Folding Gift Boxes	13-14
Two-Piece Pop-up Apparel Boxes	15
Lock Corner Gift Boxes.....	16
Pharmaceutical Boxes	17

BAKERY & FOOD SERVICE BOXES

Cake, Pastry, and Pie Boxes.....	19-20
Two Piece Lock Corner Boxes.....	20
Donut Boxes & Trays.....	20
Color Bakery Boxes	21-23
Cupcake Boxes & Inserts.....	23-25
Cake Pads and Circles.....	26
Windowed Bakery Boxes	27-28
Pizza Boxes	28
Cup Carriers & Trays	29
Stackable Meal Boxes	29
Gable Boxes	29
Deli Boxes	30
Catering Boxes.....	30

CANDY BOXES

Setup Lid Candy Boxes	31
Clear Vinyl Lid Candy Boxes	32-33
Holiday Packaging	34
Conversation Boxes.....	34
Macaron Boxes & Tray.....	35
Jumbo Strawberry Inserts.....	35
Candy Trays.....	35-36
Tray Assortment & Die Cut Platforms	37
Candy Pads	37
Folding Candy Boxes	37
Candy Cups & Stretch Bows.....	37-38

IMPORTANT INFORMATION

Imprinting Information	39
------------------------------	----

RETAIL BOXES



In-stock Jewelry Boxes

Your choice of exteriors: # 5 White Krome, # 8 Swirl and #326 Brown Kraft*.
*#326 Brown Kraft available in **BOLD** sizes only.

SEE PAGE 4
OF PRODUCT CATALOG

RESALE PRICE PER 100

STOCK NUMBER	SIZE	SUGGESTED USES	CASE PACK	WEIGHT PER CASE	UNDER 1000 PRICE	1000 PRICE	2500 PRICE
11	1-3/4 x 1-1/8 x 5/8	charms	100	2	\$103.20	\$76.30	\$62.20
21	2-1/2 x 1-1/2 x 7/8	earrings	100	3	\$103.20	\$76.30	\$62.20
22**	1-7/8 x 1-7/8 x 7/8	earrings	100	3	\$121.60	\$89.90	\$73.60
25	3-1/2 x 2-1/2 x 3/4	earrings	100	4	\$158.00	\$115.90	\$95.40
31	3-1/16 x 2-1/8 x 5/8	pendant	100	4	\$105.50	\$78.50	\$64.80
32	3-1/16 x 2-1/8 x 1	pins, earrings	100	4	\$110.70	\$81.90	\$68.00
33	3-1/2 x 3-1/2 x 1	bracelet, compact	100	6	\$133.70	\$98.30	\$81.20
33D	3-1/2 x 3-1/2 x 1-1/2	wide bracelet	100	7	\$146.50	\$109.20	\$90.00
34	3-1/2 x 3-1/2 x 2	very wide bracelet	100	8	\$185.20	\$137.00	\$112.50
35	3-5/8 x 2-5/8 x 1-1/4	large pin	100	6	\$145.80	\$109.10	\$88.40
43D	4-3/8 x 3-1/4 x 1-7/16	bracelet	100	8	\$182.80	\$135.50	\$111.60
53	5-1/4 x 3-3/4 x 7/8	necklace, earring set	100	8	\$153.20	\$112.80	\$95.00
53D	5-1/4 x 3-3/4 x 1-3/4	necklace, earring set	100	11	\$180.50	\$133.90	\$111.60
65	6 x 5 x 1	necklace, earring set	50	7	\$239.20	\$176.10	\$146.40
75	7 x 5-1/2 x 1	earring and necklace set	50	8	\$286.40	\$211.20	\$174.40
82A	8 x 2 x 7/8	necklace, bracelet	100	8	\$148.30	\$109.90	\$90.90
85	8 x 5-1/2 x 1-1/4	large beads, necklace	50	9	\$290.50	\$215.40	\$178.30
85D	8 x 5-1/2 x 2	large beads, necklace	50	10	\$331.50	\$247.30	\$203.40
ADD FOR IMPRINTING					\$40.40	\$32.20	\$26.90

Minimum imprinting charge per STYLE is \$200.00

*#326 Brown Kraft available in bold sizes only.

**Available in 8 White Swirl & 326 Brown Kraft only.



In-stock Ring Boxes

102 Ring Boxes have white flocked polyfoam insert except #11 Black has black flocked polyfoam insert.

5 White Krome, # 8 Swirl and #326 Brown Kraft

STOCK NUMBER	SIZE	SUGGESTED USES	CASE PACK	WEIGHT PER CASE	UNDER 1000 PRICE	1000 PRICE	2500 PRICE
102	1-1/2 x 1-1/4 x 1-1/2		100	3	\$243.20	\$178.90	\$148.10

#011 Black, #315 Gold Linen, #316 Silver Linen

102	1-1/2 x 1-1/4 x 1-1/2		100	3	\$275.40	\$190.20	\$156.00
-----	-----------------------	--	-----	---	----------	----------	----------

102 Ring Boxes have white flocked polyfoam insert except #11 Black has black flocked polyfoam insert.

In-stock Jewelry Boxes - Assorted Colors

Made with rigid white lined board.

Available in the following colors: #011 Black, #131 Oatmeal Groove, #135 Black Pinstripe, #315 Gold Linen, #2045 Black Onyx

SEE PAGE 5
OF PRODUCT CATALOG

RESALE PRICE PER 100



STOCK NUMBER	SIZE	SUGGESTED USES	CASE PACK	WEIGHT PER CASE	UNDER 1000 PRICE	1000 PRICE	2500 PRICE
11	1-3/4 x 1-1/8 x 5/8	charms	100	2	\$120.20	\$83.50	\$68.20
21	2-1/2 x 1-1/2 x 7/8	earrings	100	3	\$120.20	\$83.50	\$68.20
32	3-1/16 x 2-1/8 x 1	pins, earrings	100	4	\$134.20	\$93.20	\$77.00
33	3-1/2 x 3-1/2 x 1	bracelet, compact	100	6	\$161.80	\$112.30	\$92.50
33D	3-1/2 x 3-1/2 x 1-1/2	wide bracelet	100	7	\$183.40	\$127.00	\$105.20
34	3-1/2 x 3-1/2 x 2	very wide bracelet	100	8	\$220.50	\$153.10	\$126.90
53	5-1/4 x 3-3/4 x 7/8	necklace, earring set	100	8	\$197.30	\$135.80	\$111.80
65	6 x 5 x 1	necklace, earring set	50	7	\$294.80	\$204.80	\$167.60
82A	8 x 2 x 7/8	necklace, bracelet	100	8	\$182.50	\$125.30	\$104.40
85*	8 x 5-1/2 x 1-1/4	large beads, necklace	50	9	\$367.20	\$254.40	\$210.40

ADD FOR IMPRINTING

\$40.40 \$32.20 \$26.90

Minimum imprinting charge per STYLE is \$200.00

In-stock Jewelry Boxes - Assorted Colors

SEE PAGE 5
OF PRODUCT CATALOG

Made with rigid white lined board.

Available in the following colors: #316 Silver Linen, #643 Deep Purple, #2094 Black Swirl



RESALE PRICE PER 100

STOCK NUMBER	SIZE	SUGGESTED USES	CASE PACK	WEIGHT PER CASE	UNDER 1000 PRICE	1000 PRICE	2500 PRICE
21	2-1/2 x 1-1/2 x 7/8	earrings	100	3	\$120.20	\$83.50	\$68.20
32	3-1/16 x 2-1/8 x 1	pins, earrings	100	4	\$134.20	\$93.20	\$77.00
33	3-1/2 x 3-1/2 x 1	bracelet, compact	100	6	\$161.80	\$112.30	\$92.50
33D**	3-1/2 x 3-1/2 x 1-1/2	wide bracelet	100	7	\$183.40	\$127.00	\$105.20
34	3-1/2 x 3-1/2 x 2	very wide bracelet	100	8	\$220.50	\$153.10	\$126.90
53	5-1/4 x 3-3/4 x 7/8	necklace, earring set	100	8	\$197.30	\$135.80	\$111.80
65	6 x 5 x 1	necklace, earring set	50	7	\$294.80	\$204.80	\$167.60
82A	8 x 2 x 7/8	necklace, bracelet	100	8	\$182.50	\$125.30	\$104.40
85*	8 x 5-1/2 x 1-1/4	large beads, necklace	50	9	\$367.20	\$254.40	\$210.40

ADD FOR IMPRINTING

\$40.40 \$32.20 \$26.90

Minimum imprinting charge per STYLE is \$200.00

*Available in #316 Silver Linen ONLY

**Available in #643 Deep Purple ONLY

In-stock Jewelry Boxes - Assorted Colors

SEE PAGE 5
OF PRODUCT CATALOG

Made with rigid white lined board.

Available in the following colors: #611 Deep Woods Green, #2057 Cocoa, #2330 Slate Gray, #2354 Fuchsia

RESALE PRICE PER 100

STOCK NUMBER	SIZE	SUGGESTED USES	CASE PACK	WEIGHT PER CASE	UNDER 1000 PRICE	1000 PRICE	2500 PRICE
21	2-1/2 x 1-1/2 x 7/8	earrings	100	3	\$120.20	\$83.50	\$68.20
32	3-1/16 x 2-1/8 x 1	pins, earrings	100	4	\$134.20	\$93.20	\$77.00
33	3-1/2 x 3-1/2 x 1	bracelet, compact	100	6	\$161.80	\$112.30	\$92.50
53	5-1/4 x 3-3/4 x 7/8	necklace, earring set	100	8	\$197.30	\$135.80	\$111.80
65	6 x 5 x 1	necklace, earring set	50	7	\$294.80	\$204.80	\$167.60
82A	8 x 2 x 7/8	necklace, bracelet	100	8	\$182.50	\$125.30	\$104.40

ADD FOR IMPRINTING

\$40.40 \$32.20 \$26.90

Minimum imprinting charge per STYLE is \$200.00

In-stock Jewelry Boxes - Assorted Colors

SEE PAGE 5
OF PRODUCT CATALOG

Made with rigid white lined board.

Available in the following colors:

- #586 Cherry Red #2056 / 570 Coffee & Cream #2333 Cobalt Blue
- #606 Brick Red #2106 French Floral #2334 Tropical Blue
- #641 Jade #2148 White Sand #2353 Blue Ice
- #642 Navy Blue #2332 Lilac #2045/2284 Black Onyx / White Canvas



RESALE PRICE PER 100

STOCK NUMBER	SIZE	SUGGESTED USES	CASE PACK	WEIGHT PER CASE	UNDER 1000 PRICE	1000 PRICE	2500 PRICE
21	2-1/2 x 1-1/2 x 7/8	earrings	100	3	\$120.20	\$83.50	\$68.20
32	3-1/16 x 2-1/8 x 1	pins, earrings	100	4	\$134.20	\$93.20	\$77.00
33	3-1/2 x 3-1/2 x 1	bracelet, compact	100	6	\$161.80	\$112.30	\$92.50
53	5-1/4 x 3-3/4 x 7/8	necklace, earring set	100	8	\$197.30	\$135.80	\$111.80
65*	6 x 5 x 1	necklace, earring set	50	7	\$294.80	\$204.80	\$167.60

ADD FOR IMPRINTING

\$40.40 \$32.20 \$26.90

Minimum imprinting charge per STYLE is \$200.00

*NOT available in #641 Jade, 2106 French Floral, #2148 White Sands, #2332 Lilac & 2353 Ice Blue

RETAIL PRICE LIST



Jewelry Boxes Custom & Lagniappe

Your choice of BOXit swatchbook papers for lids and bases. Boxes are made with rigid white lined board; filled with non-tarnishing jeweler's cotton.

SEE PAGE 6
OF PRODUCT CATALOG

RESALE PRICE PER 100

STOCK NUMBER	SIZE	SUGGESTED USES	CASE PACK	WEIGHT PER CASE	UNDER 1000 PRICE	1000 PRICE	2500 PRICE
11	1-3/4 x 1-1/8 x 5/8	charms	100	2	\$166.10	\$131.40	\$96.50
21	2-1/2 x 1-1/2 x 7/8	earrings	200	6	\$166.10	\$131.40	\$96.50
22	1-7/8 x 1-7/8 x 7/8	earrings	100	3	\$195.90	\$155.30	\$114.20
25	3-1/2 x 2-1/2 x 3/4	earrings	100	4	\$300.50	\$218.70	\$178.90
31	3-1/16 x 2-1/8 x 5/8	pendant	100	4	\$170.20	\$134.80	\$101.00
32	3-1/16 x 2-1/8 x 1	pins, earrings	200	8	\$179.30	\$142.50	\$104.70
33	3-1/2 x 3-1/2 x 1	bracelet, compact	100	6	\$212.20	\$168.00	\$124.70
33D	3-1/2 x 3-1/2 x 1-1/2	wide bracelet	100	7	\$235.60	\$186.90	\$137.90
34	3-1/2 x 3-1/2 x 2	very wide bracelet	100	8	\$289.70	\$231.80	\$169.90
35	3-5/8 x 2-5/8 x 1-1/4	large pin	100	6	\$220.60	\$174.90	\$128.90
43D	4-3/8 x 3-1/4 x 1-7/16	bracelet	100	8	\$289.70	\$231.80	\$169.90
53	5-1/4 x 3-3/4 x 7/8	necklace, earring set	100	8	\$235.60	\$186.90	\$137.90
53D	5-1/4 x 3-3/4 x 1-3/4	necklace, earring set	100	11	\$282.60	\$225.30	\$166.10
64	6 x 4-1/2 x 1	necklace	100	10	\$394.00	\$287.30	\$235.60
65	6 x 5 x 1	necklace, earring set	50	7	\$361.60	\$289.10	\$211.50
75	7 x 5-1/2 x 1	earring & necklace	50	8	\$430.70	\$344.30	\$253.60
82A	8 x 2 x 7/8	necklace, bracelet	100	8	\$249.20	\$198.70	\$146.50
85	8 x 5-1/2 x 1-1/4	large beads, necklace	50	9	\$430.70	\$344.30	\$253.60
85D	8 x 5-1/2 x 2	large beads, necklace	50	10	\$479.50	\$355.60	\$293.50
102	1-1/2 x 1-1/4 x 1-1/2	large ring (Polyfoam Insert)	100	3	\$361.60	\$289.10	\$211.50
ADD FOR LAGNIAPPE PAPERS:					20%	20%	20%
ADD FOR IMPRINTING					\$40.40	\$32.20	\$26.90

Minimum imprinting charge per STYLE is \$200.00

Minimum order for custom jewelry boxes is 200 of a size and color. Sizes may be combined for quantity pricing.

For larger quantities, please request a quotation. 102's available with white flocked polyfoam or black flocked polyfoam.

Jewelry Box Assortments

Includes 78 cotton filled jewelry boxes in five popular sizes
Can be shipped UPS.

SEE PAGE 7
OF PRODUCT CATALOG

RESALE PRICE PER CASE

STOCK NUMBER	DESCRIPTION	SUGGESTED USES	CASE PACK	WEIGHT PER CASE	UNDER 1000 PRICE	1000 PRICE	2500 PRICE
78A	008 White Swirl		78	4	\$173.40	\$128.70	\$106.40
78A	326 Brown Kraft		78	4	\$173.40	\$128.70	\$106.40
78A	315 Gold Linen		78	4	\$195.80	\$145.70	\$120.60
78A	316 Silver Linen		78	4	\$195.80	\$145.70	\$120.60
78A	131 Oatmeal Groove		78	4	\$195.80	\$145.70	\$120.60
78A	135 Black Pinstripe		78	4	\$195.80	\$145.70	\$120.60
78A	611 Deep Woods Green		78	4	\$195.80	\$145.70	\$120.60
78A	011 Black		78	4	\$195.80	\$145.70	\$120.60

IMPRINTING NOT AVAILABLE

Case contains: 18 - #11; 18 - #21; 18 - #32; 12 - #33 & 12 - #53

Jewelry Box Assortments

Includes 78 cotton filled jewelry boxes in four popular sizes
Can be shipped UPS.

SEE PAGE 7
OF PRODUCT CATALOG

RESALE PRICE PER CASE

STOCK NUMBER	DESCRIPTION	SUGGESTED USES	CASE PACK	WEIGHT PER CASE	UNDER 1000 PRICE	1000 PRICE	2500 PRICE
78B	606 Brick Red		78	4	\$195.80	\$145.70	\$120.60
78B	641 Jade		78	4	\$195.80	\$145.70	\$120.60
78B	642 Navy		78	4	\$195.80	\$145.70	\$120.60
78B	643 Purple		78	4	\$195.80	\$145.70	\$120.60
78B	2045 Black Onyx		78	4	\$195.80	\$145.70	\$120.60
78B	2106 French Floral		78	4	\$195.80	\$145.70	\$120.60
78B	2330 Slate Gray		78	4	\$195.80	\$145.70	\$120.60
78B	2332 Lilac		78	4	\$195.80	\$145.70	\$120.60
78B	2333 Cobalt Blue		78	4	\$195.80	\$145.70	\$120.60
78B	2334 Tropical Blue		78	4	\$195.80	\$145.70	\$120.60

IMPRINTING NOT AVAILABLE

Case contains: 36 - 21; 18 - 32; 12 - 33 & 12 - 53

In-stock Peachboard Platform

Peachboard platforms only

#150 White & #151 Black

SEE PAGE 8
OF PRODUCT CATALOG

RESALE PRICE PER 100

STOCK NUMBER	SIZE	SUGGESTED USES	CASE PACK	WEIGHT PER CASE	UNDER 1000 PRICE	1000 PRICE	2500 PRICE
PL21	2-1/2 x 1-1/2		100	0.7	\$52.80	\$37.80	\$29.10
PL32	3-1/16 x 2-1/8		100	1.1	\$67.40	\$48.00	\$37.10
PL33	3-1/2 x 3-1/2		100	1.4	\$84.40	\$60.20	\$46.50
PL53	5-1/4 x 3-3/4		100	2.5	\$124.10	\$88.50	\$68.20



Peachboard Platforms inserted into boxes

#326 Brown Kraft jewelry boxes with black peachboard inserts

RESALE PRICE PER 100

STOCK NUMBER	DESCRIPTION	CASE PACK	WEIGHT PER CASE	UNDER 1000 PRICE	1000 PRICE	2500 PRICE
21PL	2-1/2 x 1-1/2 x 7/8	100	3.0	\$116.30	\$89.30	\$75.40
32PL	3-1/16 x 2-1/8 x 1	100	4.5	\$128.70	\$99.90	\$86.00
33PL	3-1/2 x 3-1/2 x 1	100	7.5	\$156.80	\$121.50	\$104.50
ADD FOR IMPRINTING				\$40.40	\$32.20	\$26.90

In-stock Cotton

SEE PAGE 9
OF PRODUCT CATALOG

RESALE PRICE PER 100

STOCK NUMBER	SIZE	CASE PACK	WEIGHT PER CASE	UNDER 1000 PRICE	1000 PRICE	2500 PRICE
21	2-1/2 x 1-1/2	100	0.2	\$37.20	\$26.40	\$20.30
32	3-1/16 x 2-1/8	100	0.2	\$39.40	\$28.20	\$22.40
33	3-1/2 x 3-1/2	100	0.5	\$40.30	\$29.00	\$22.70
33D	3-1/2 x 3-1/2	100	0.5	\$40.30	\$29.00	\$22.70
34	3-1/2 x 3-1/2	100	0.5	\$40.30	\$29.00	\$22.70
53	5-1/4 x 3-3/4	100	0.8	\$65.50	\$46.70	\$36.60
75	7 x 5-1/2	50	1.3	\$103.40	\$79.10	\$62.70
82A	8 x 2	100	0.6	\$46.70	\$36.60	\$28.20

If ordering extra cotton with stock boxes, cotton will be packed separately.

If ordering extra cotton with imprinted or custom boxes, cotton will be inserted.

In-stock Set-up Mailing Boxes

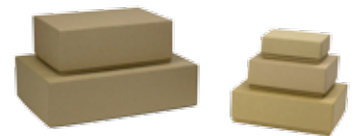
#326 Brown Kraft

Made of extra heavy board to meet US Postal regulations.

SEE PAGE 9
OF PRODUCT CATALOG

RESALE PRICE PER 100

STOCK NUMBER	SIZE	CASE PACK	WEIGHT PER CASE	UNDER 1000 PRICE	1000 PRICE	2500 PRICE
43M	4-1/2 x 3-1/2 x 1-3/4	60	8	\$211.40	\$131.40	\$116.00
64M	6 x 4-1/2 x 2	120	22	\$273.50	\$169.00	\$149.20
75M	7-1/2 x 5 x 2-3/4	72	21	\$387.90	\$240.50	\$212.50
11M	10 x 7 x 2-3/4	36	17	\$459.50	\$284.40	\$250.90
ADD FOR IMPRINTING				\$40.40	\$32.20	\$26.90



RETAIL PRICE LIST



In-stock VIEWit Jewelry Boxes

SEE PAGE 10

Boxes are made with rigid white lined board; filled with non-tarnishing jeweler's cotton. OF PRODUCT CATALOG
Clear Vinyl lids with #8 White Swirl bases

RESALE PRICE PER 100

STOCK NUMBER	SIZE	SUGGESTED USES	CASE PACK	WEIGHT PER CASE	UNDER 1000 PRICE	1000 PRICE	2500 PRICE
#8 WHITE SWIRL BASES							
V21	2-1/2 x 1-1/2 x 7/8	earrings	100	2	\$139.80	\$104.40	\$88.50
V32	3-1/16 x 2-1/8 x 1	pins, earrings	100	3	\$123.40	\$91.40	\$76.20
V33	3-1/2 x 3-1/2 x 1	bracelet, compact	100	5	\$148.70	\$110.50	\$92.30
V53	5-1/4 x 3-3/4 x 7/8	necklace, earring set	100	7	\$174.40	\$129.60	\$109.10
V75	7 x 5-1/2 x 1	earring & necklace set	50	6	\$309.30	\$229.50	\$191.30
V82A	8 x 2 x 7/8	necklace, bracelet	100	6	\$165.80	\$122.90	\$102.20
ADD FOR HOT STAMPING (Printing Not Available)					\$40.40	\$32.20	\$26.90

Minimum imprinting charge per STYLE is \$200.00

Custom VIEWit Jewelry Boxes

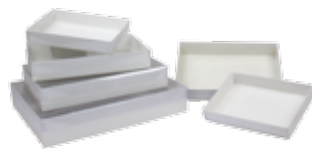
SEE PAGE 10

Boxes are made with rigid white lined board; filled with non-tarnishing jeweler's cotton. OF PRODUCT CATALOG
Clear Vinyl lids with your choice of BOXit swatchbook papers for bases.

RESALE PRICE PER 100

STOCK NUMBER	SIZE	SUGGESTED USES	CASE PACK	WEIGHT PER CASE	UNDER 1000 PRICE	1000 PRICE	2500 PRICE
V21	2-1/2 x 1-1/2 x 7/8	earrings	100	2	\$178.20	\$133.00	\$112.80
V32	3-1/16 x 2-1/8 x 1	pins, earrings	100	3	\$155.40	\$115.70	\$96.30
V33	3-1/2 x 3-1/2 x 1	bracelet, compact	100	5	\$188.10	\$139.20	\$116.00
V53	5-1/4 x 3-3/4 x 7/8	necklace, earring set	100	7	\$221.00	\$163.40	\$136.60
V75	7 x 5-1/2 x 1	earring & necklace set	50	6	\$390.60	\$289.70	\$240.90
V82A	8 x 2 x 7/8	necklace, bracelet	100	6	\$207.90	\$154.10	\$128.70
ADD FOR LAGNIAPPE PAPERS:					10%	10%	10%
ADD FOR HOT STAMPING (Printing Not Available)					\$40.40	\$32.20	\$26.90

Minimum imprinting charge per STYLE is \$200.00. Minimum order for custom jewelry boxes is 200 of a size and color.



In-stock VIEWit Stationery Boxes

SEE PAGE 11

Boxes are made with rigid white lined board. Clear Vinyl lids with your choice of OF PRODUCT CATALOG
#8 White Swirl or #315 Gold Linen Foil bases.

RESALE PRICE PER 100

STOCK NUMBER	SIZE	SUGGESTED USES	CASE PACK	WEIGHT PER CASE	UNDER 1000 PRICE	1000 PRICE	2500 PRICE
V641	6-9/16 x 4-13/16 x 1		100	10	\$232.30	\$172.60	\$144.20
V738	7-3/8 x 5-3/8 x 1		50	6	\$283.60	\$210.40	\$175.30
V858	8-5/8 x 5-5/8 x 1-3/8		50	8	\$306.50	\$227.60	\$190.20
V968	9-5/8 x 6-3/8 x 1-5/8		50	10	\$321.50	\$238.10	\$199.10
V1072	10 x 7 x 2		50	12	\$344.10	\$255.80	\$212.70
V118	11-1/4 x 8-3/4 x 2		20	6	\$401.70	\$298.10	\$249.50
ADD FOR HOT STAMPING (Printing Not Available)					\$40.40	\$32.20	\$26.90

Minimum imprinting charge per STYLE is \$200.00

Custom VIEWit Stationery Boxes

SEE PAGE 11

Boxes are made with rigid white lined board. Clear Vinyl lids with your choice of OF PRODUCT CATALOG
BOXit swatchbook papers for bases.

RESALE PRICE PER 100

STOCK NUMBER	SIZE	SUGGESTED USES	CASE PACK	WEIGHT PER CASE	UNDER 1000 PRICE	1000 PRICE	2500 PRICE
V641	6-9/16 x 4-13/16 x 1		100	10	\$294.80	\$218.60	\$183.20
V738	7-3/8 x 5-3/8 x 1		50	6	\$360.20	\$266.50	\$223.00
V858	8-5/8 x 5-5/8 x 1-3/8		50	8	\$390.30	\$289.50	\$242.30
V968	9-5/8 x 6-3/8 x 1-5/8		50	10	\$409.10	\$303.00	\$252.70
V1072	10 x 7 x 2		50	12	\$438.10	\$324.80	\$270.70
V118	11-1/4 x 8-3/4 x 2		20	6	\$510.50	\$379.10	\$317.40
ADD FOR LAGNIAPPE PAPERS:					10%	10%	10%
ADD FOR HOT STAMPING (Printing Not Available)					\$40.40	\$32.20	\$26.90

Minimum imprinting charge per STYLE is \$200.00

Sizes may be combined for quantity pricing. For larger quantities, please request a quotation.

Custom sizes are also available - minimum is 500 of a size & color. Please request a quotation.

Minimum order for custom VIEWit boxes is 200 of a size and color

In-stock Two Piece Set-Up Apparel Boxes

Boxes are made with rigid white lined board; white interior. Bases are white litho.
Full telescope lids are available in #5 White Krome and #8 White Swirl.

SEE PAGE 12
OF PRODUCT CATALOG

RESALE PRICE PER 100

STOCK NUMBER	SIZE	SUGGESTED USES	CASE PACK	WEIGHT PER CASE	UNDER 1000 PRICE	1000 PRICE	2500 PRICE
270*	8 x 8 x 5/8	handkerchief	100	17	\$170.20	\$124.70	\$106.90
271*	9-1/2 x 7 x 5/8	hosiery	100	18	\$182.30	\$133.10	\$115.70
273A*	14 x 3-3/4 x 3/4	ties	100	18	\$170.20	\$124.70	\$106.90
273	14 x 4-1/2 x 3/4	ties, gloves	100	19	\$178.20	\$129.60	\$111.80
ADD FOR IMPRINTING					\$40.40	\$32.20	\$26.90

Minimum imprinting charge per STYLE is \$200.00

* Only available in #5 White Krome



Custom Two Piece Set-Up Apparel Boxes

Boxes are made with rigid white lined board; white interior. Bases are white litho.
Lids are available in your choice of BOXit swatchbook papers.

RESALE PRICE PER 100

STOCK NUMBER	DESCRIPTION	SUGGESTED USES	CASE PACK	WEIGHT PER CASE	UNDER 1000 PRICE	1000 PRICE	2500 PRICE
270	8 x 8 x 5/8	handkerchief	100	17	\$407.10	\$305.60	\$268.20
271	9-1/2 x 7 x 5/8	hosiery	100	18	\$435.50	\$326.10	\$289.50
272	11 x 4-1/2 x 3/4	gloves	36	7	\$415.40	\$311.90	\$273.50
273A	14 x 3-3/4 x 3/4	ties	100	18	\$396.90	\$306.70	\$270.80
273	14 x 4-1/2 x 3/4	ties, gloves	100	19	\$435.50	\$326.10	\$289.50
ADD FOR COLOR BASES instead of white litho:					10%	10%	10%
ADD FOR LAGNIAPPE LIDS:					10%	10%	10%
ADD FOR LAGNIAPPE LIDS & BASES:					30%	30%	30%
ADD FOR IMPRINTING					\$40.40	\$32.20	\$26.90

Minimum imprinting charge per STYLE is \$200.00

Minimum order for custom two piece set-up boxes is 300 of a size and color. For larger quantities, please request a quotation.

Custom Two Piece Set-Up Apparel Boxes

Your choice of BOXit swatch book papers for lids. Made with rigid white lined board; white interior. Bases are white litho or are available in your choice of BOXit swatch book papers for a nominal charge

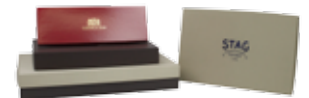
SEE PAGE 13
OF PRODUCT CATALOG

RESALE PRICE PER 100

STOCK NUMBER	SIZE	SUGGESTED USES	CASE PACK	WEIGHT PER CASE	UNDER 1000 PRICE	1000 PRICE	2500 PRICE
SET-UP APPAREL BOXES WITH FULL TELESCOPE LIDS							
274	11 x 8 x 1	lingerie	72	15	\$585.00	\$453.70	\$397.70
275	13-1/2 x 9 x 1-3/4	sweater	30	17	\$742.30	\$579.70	\$503.60
276	15 x 9-1/2 x 2	shirt	24	17	\$853.90	\$668.90	\$578.60
282	17 x 11 x 2-1/2	robe, jacket	16	15	\$1,072.50	\$838.40	\$728.20
283	19 x 12 x 3	coat, comforter	8	11	\$1,287.30	\$1,008.50	\$875.00
281	19-1/2 x 14-1/2 x 3/4	placemats	29	29	\$1,187.80	\$948.80	\$821.40
284	24 x 14 x 4	suit, coat	5	9	\$7,477.80	\$5,899.10	\$5,204.90
SET-UP APPAREL BOXES WITH SHALLOW LIDS							
275S	13-1/2 x 9 x 1-3/4 - 7/8	sweater	30	17	\$665.30	\$520.00	\$451.40
276S	15 x 9-1/2 x 2 - 1	shirt	24	17	\$765.60	\$599.20	\$519.30
282S	17 x 11 x 2-1/2 - 1-1/4	robe, jacket	16	15	\$963.10	\$752.50	\$654.00
283S	19 x 12 x 3 - 1-1/2	coat, comforter	8	11	\$1,156.40	\$905.60	\$785.90
284S	24 x 14 x 4 - 2	suit, coat	5	9	\$6,750.80	\$5,358.00	\$4,699.90
ADD FOR COLOR BASES instead of white litho:					10%	10%	10%
ADD FOR LAGNIAPPE LIDS:					10%	10%	10%
ADD FOR LAGNIAPPE LIDS & BASES:					30%	30%	30%
ADD FOR IMPRINTING					\$40.40	\$32.20	\$26.90

Minimum imprinting charge per STYLE is \$200.00

Minimum order for custom two piece set-up boxes is 300 of a size and color. For larger quantities, please request a quotation.



RETAIL PRICE LIST

In-stock Pillow Puff Packs

SEE PAGE 14
OF PRODUCT CATALOG

One-piece puff pillow packs available in White Gloss. Puff pillow packs make great gift certificate holders.

RESALE PRICE PER 100

STOCK NUMBER	SIZE	CASE PACK	WEIGHT PER CASE	UNDER 1000 PRICE	1000 PRICE	2500 PRICE
105-000	5 x 2 x 10-7/8	250	15	\$59.60	\$49.40	\$40.10
ADD FOR HOT STAMPING (Printing Not Available)				\$40.40	\$32.20	\$26.90

Minimum imprinting charge per STYLE is \$200.00



In-stock Two Piece Pop-up Hat Boxes

SEE PAGE 14
OF PRODUCT CATALOG

White Gloss Pop-Up Hat Boxes with gray interior. Pop-up boxes are perfect for hats, wreaths, balloons and display windows. Includes polished white cord handle.

RESALE PRICE PER 100

STOCK NUMBER	SIZE	CASE PACK	WEIGHT PER CASE	UNDER 1000 PRICE	1000 PRICE	2500 PRICE
12126-000	12 x 12 x 6	50	34	\$490.00	\$400.70	\$330.20
14147-000	14 x 14 x 7	25	23	\$630.20	\$514.80	\$425.50
16167-000	16 x 16 x 7	25	27	\$744.70	\$609.90	\$502.90
18187-000	18 x 18 x 7	25	30	\$839.80	\$687.70	\$567.20
ADD FOR HOT STAMPING (Printing Not Available)				\$40.40	\$32.20	\$26.90

Minimum imprinting charge per STYLE is \$200.00.



In-stock Silverware Boxes

SEE PAGE 15
OF PRODUCT CATALOG

Boxes are made with rigid white lined board; filled with non-tarnishing jeweler's cotton. #8 White Swirl

RESALE PRICE PER 100

STOCK NUMBER	SIZE	SUGGESTED USES	CASE PACK	WEIGHT PER CASE	UNDER 1000 PRICE	1000 PRICE	2500 PRICE
61	6-1/2 x 1-3/8 x 7/8	teaspoon	100	5	\$178.10	\$131.10	\$109.10
91	9-3/4 x 1-7/8 x 1-1/4	tablespoon	50	5	\$286.70	\$212.20	\$175.30
93	9-3/4 x 3 x 2	place setting	50	8	\$383.90	\$283.40	\$233.30

IMPRINTING NOT AVAILABLE - For imprinted boxes, see Custom pricing below



Custom & Lagniappe Silverware Boxes

SEE PAGE 15
OF PRODUCT CATALOG

Boxes are made with rigid white lined board; filled with non-tarnishing jeweler's cotton. Your choice of BOXit swatchbook papers for lids and bases.

RESALE PRICE PER 100

STOCK NUMBER	SIZE	SUGGESTED USES	CASE PACK	WEIGHT PER CASE	UNDER 1000 PRICE	1000 PRICE	2500 PRICE
61	6-1/2 x 1-3/8 x 7/8	teaspoon	100	5	\$412.00	\$327.40	\$243.10
83	8-1/2 x 3 x 2-1/2	gravity ladle	50	8	\$807.40	\$647.10	\$478.50
91	9-3/4 x 1-7/8 x 1-1/4	tablespoon	50	5	\$644.20	\$516.50	\$383.00
93	9-3/4 x 3 x 2	place setting	50	8	\$782.20	\$628.90	\$465.60
112	11 x 2-1/2 x 1-1/4	knife	50	7	\$743.00	\$597.30	\$442.40
143*	14 x 3-1/2 x 2	large setting	50	11	\$695.90	\$559.70	\$414.50
ADD FOR LAGNIAPPE PAPERS:					20%	20%	20%
ADD FOR HOT STAMPING					\$40.40	\$32.20	\$26.90

Minimum imprinting charge per STYLE is \$200.00

*No Cotton

Minimum order for custom silverware boxes is 250 of a size and color. Sizes may be combined for quantity pricing. For larger quantities, please request a quotation.

In-stock Metallic Gift Certificate Folders

Shiny #431 Gold and #351 Silver Gift Certificate folders available either plain or with an embossed front cover. Folders can be hot stamped.

SEE PAGE 16
OF PRODUCT CATALOG

RESALE PRICE PER 100

STOCK NUMBER	SIZE	DESCRIPTION	CASE PACK	WEIGHT PER CASE	UNDER 1000 PRICE	1000 PRICE	2500 PRICE
63F	6-1/2 x 3-1/4	plain folders	200	4	\$183.40	\$102.00	\$74.80
63FE	6-1/2 x 3-1/4	embossed with pictured design	200	4	\$183.40	\$102.00	\$74.80
ADD FOR IMPRINTING					\$40.40	\$32.20	\$26.90

Minimum imprinting charge per STYLE is \$200.00

Minimum order for custom gift certificate folders is 200 of a size and color.



In-stock Gift Certificate and Smart Card Boxes

Boxes are made with white rigid-lined board with white platforms.

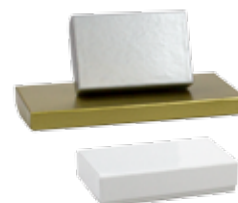
#323 Smart Card has the same paper for the lids and bases, and are available in #5 White Krome, #115 Gold or #37 Silver.

#631 Gift Certificate Boxes are available in #5 White Krome, #115 Gold or #37 Silver with White Litho Bases.

SEE PAGE 17
OF PRODUCT CATALOG

RESALE PRICE PER 100

STOCK NUMBER	SIZE	DESCRIPTION	CASE PACK	WEIGHT PER CASE	UNDER 1000 PRICE	1000 PRICE	2500 PRICE
323	3-1/2 x 2-1/4 x 3/4	Smart Cards	100	5	\$230.60	\$173.40	\$138.80
631	6-5/8 x 3-1/4 x 1/2	Certificates	100	9	\$260.30	\$194.30	\$155.70



Custom Gift Certificate Boxes

Your choice of BOXit swatch book papers for lids. Platforms, bases and lids have white interiors. #323 available in same paper for lids and bases.

SEE PAGE 17
OF PRODUCT CATALOG

RESALE PRICE PER 100

STOCK NUMBER	SIZE	DESCRIPTION	CASE PACK	WEIGHT PER CASE	UNDER 1000 PRICE	1000 PRICE	2500 PRICE
323	3-1/2 x 2-1/4 x 3/4	Smart Cards	100	5	\$290.50	\$220.50	\$176.10
631	6-5/8 x 3-1/4 x 1/2	Certificates	100	9	\$298.90	\$224.90	\$179.70
ADD FOR LAGNIAPPE PAPERS:					10%	10%	10%
ADD FOR IMPRINTING					\$40.40	\$32.20	\$26.90

Minimum imprinting charge per STYLE is \$200.00

Minimum order for custom gift certificate boxes is 200 of a size and color.



Custom Gift Certificate Boxes

Your choice of BOXit swatch book papers for lids & bases. Platforms, bases and lids have white interiors.

Platforms and interiors available in #11 Black, #115 Gold or #37 Silver.

SEE PAGE 17
OF PRODUCT CATALOG

RESALE PRICE PER 100

STOCK NUMBER	SIZE	DESCRIPTION	CASE PACK	WEIGHT PER CASE	200 TO 499	500 TO 999	1000 OR MORE
323D	3-1/2 x 2-1/4 x 3/4	Smart Cards	100	4	\$423.80	\$321.40	\$255.90
631D	6-5/8 x 3-1/4 x 1/2	Certificates	100	9	\$449.00	\$338.10	\$270.20
ADD FOR LAGNIAPPE PAPERS:					10%	10%	10%
ADD FOR IMPRINTING					\$35.90	\$28.60	\$23.90

Minimum imprinting charge per STYLE is \$200.00

MINIMUM ORDER FOR CUSTOM GIFT CERTIFICATE BOXES IS 200 OF A SIZE AND COLOR.



RETAIL PRICE LIST

SEE PAGE 18-19
OF PRODUCT CATALOG

In-stock Two-Piece Giftware Boxes

#5 White Krome Lids & White Gloss Hi-Walls Boxes.

Complete box consists of a set-up lid and folding hi-wall. Unique hi-wall construction with gray interior board snaps into shape in seconds forming a strong, rigid, protective unit with all the appearance and strength of a set-up box, with the convenience and economy of a folding box. Lids and hi-wall priced separately.



RESALE PRICE PER 100

STOCK NUMBER	SIZE	DESCRIPTION	CASE PACK	WEIGHT PER CASE	UNDER 1000 PRICE	1000 PRICE	2500 PRICE
L4	4 x 4	lid	50	3	\$123.40	\$98.70	\$83.70
H43	4 x 4 x 3	hi-wall	50	4	\$138.80	\$114.70	\$93.50
H46	4 x 4 x 6	hi-wall	50	5	\$168.20	\$138.30	\$114.40
H49	4 x 4 x 9	hi-wall	50	8	\$195.60	\$159.90	\$130.30
H412	4 x 4 x 12	hi-wall	50	9	\$222.30	\$182.50	\$150.00
L5	5 x 5	lid	50	4	\$134.30	\$108.20	\$91.20
H53	5 x 5 x 3	hi-wall	50	5	\$171.30	\$140.90	\$114.90
L6	6 x 6	lid	50	5	\$145.70	\$117.20	\$98.30
H63	6 x 6 x 3	hi-wall	50	7	\$203.80	\$166.60	\$136.70
H66	6 x 6 x 6	hi-wall	50	9	\$234.90	\$192.60	\$158.70
H69	6 x 6 x 9	hi-wall	50	12	\$277.10	\$226.90	\$185.20
H612	6 x 6 x 12	hi-wall	50	15	\$322.50	\$265.50	\$217.20
L8	8 x 8	lid	50	8	\$178.40	\$142.50	\$120.70
H83	8 x 8 x 3	hi-wall	50	10	\$270.30	\$220.00	\$180.50
H86	8 x 8 x 6	hi-wall	50	14	\$325.50	\$265.40	\$217.20
H89	8 x 8 x 9	hi-wall	50	17	\$359.40	\$295.80	\$242.70
H812	8 x 8 x 12	hi-wall	50	21	\$436.10	\$357.30	\$292.10
L10	10 x 10	lid	50	11	\$214.40	\$172.60	\$145.80
H103	10 x 10 x 3	hi-wall	50	17	\$365.50	\$300.70	\$245.20
H106	10 x 10 x 6	hi-wall	50	22	\$449.90	\$368.80	\$301.90
H109	10 x 10 x 9	hi-wall	50	28	\$517.10	\$424.70	\$348.00
H1012	10 x 10 x 12	hi-wall	50	34	\$641.00	\$527.20	\$430.40
L12	12 x 12	lid	50	15	\$297.00	\$240.30	\$202.40
H123	12 x 12 x 3	hi-wall	50	24	\$502.60	\$413.00	\$337.70
H126	12 x 12 x 6	hi-wall	50	29	\$598.00	\$492.10	\$401.80
H129	12 x 12 x 9	hi-wall	50	37	\$699.40	\$573.70	\$469.50
H1212	12 x 12 x 12	hi-wall	50	44	\$849.40	\$697.20	\$568.60
L14	14 x 14	lid	50	19	\$379.10	\$303.00	\$256.50
H143	14 x 14 x 3	hi-wall	50	29	\$622.80	\$511.90	\$419.20
H146	14 x 14 x 6	hi-wall	50	37	\$722.60	\$591.60	\$484.40
H149	14 x 14 x 9	hi-wall	50	45	\$883.60	\$724.30	\$592.70
H1412	14 x 14 x 12	hi-wall	50	51	\$989.00	\$811.30	\$663.60
L105	10 x 5	lid	50	6	\$155.80	\$125.40	\$104.50
H1053	10 x 5 x 3	hi-wall	50	8	\$256.10	\$210.50	\$171.50
H1056	10 x 5 x 6	hi-wall	50	11	\$295.70	\$243.50	\$198.90
L138	13 x 8	lid	50	12	\$249.80	\$202.40	\$169.00
H1383	13 x 8 x 3	hi-wall	50	14	\$381.70	\$313.20	\$257.20
H1386	13 x 8 x 6	hi-wall	50	22	\$464.70	\$381.80	\$313.10
H1389	13 x 8 x 9	hi-wall	50	25	\$553.40	\$453.40	\$370.90
L1912	19 x 12	lid	50	21	\$419.00	\$336.90	\$284.30
H19123	19 x 12 x 3	hi-wall	50	33	\$869.50	\$713.70	\$583.80
H19126	19 x 12 x 6	hi-wall	50	39	\$910.00	\$746.30	\$611.40
ADD FOR HOT STAMPING					\$40.40	\$32.20	\$26.90

Minimum imprinting charge per STYLE is \$200.00. * PRINTED LIDS ARE PRICED FROM THE CUSTOM LID AND HI-WALL PAGE.

Custom Two-Piece Giftware Boxes

Your choice of BOXit swatch book papers for Lids and/or Bases.

Lids and hi-walls priced separately.

SEE PAGE 20-21
OF PRODUCT CATALOG



RESALE PRICE PER 100

STOCK NUMBER	SIZE	DESCRIPTION	CASE PACK	WEIGHT PER CASE	UNDER 1000 PRICE	1000 PRICE	2500 PRICE
L4	4 x 4	lid	50	3	\$180.50	\$136.90	\$108.50
H43	4 x 4 x 3	hi-wall	50	4	\$198.80	\$165.20	\$137.50
H46	4 x 4 x 6	hi-wall	50	5	\$257.20	\$212.00	\$179.10
H49	4 x 4 x 9	hi-wall	50	8	\$310.10	\$256.90	\$216.80
H412	4 x 4 x 12	hi-wall	50	9	\$366.40	\$302.40	\$255.10
L6	6 x 6	lid	50	5	\$215.40	\$156.00	\$131.50
H63	6 x 6 x 3	hi-wall	50	7	\$311.10	\$256.90	\$218.10
H66	6 x 6 x 6	hi-wall	50	9	\$399.60	\$330.40	\$277.40
H69	6 x 6 x 9	hi-wall	50	12	\$491.20	\$405.10	\$341.90
H612	6 x 6 x 12	hi-wall	50	15	\$589.80	\$490.00	\$412.00
L8	8 x 8	lid	50	8	\$265.80	\$189.80	\$159.90
H83	8 x 8 x 3	hi-wall	50	10	\$410.10	\$339.30	\$285.60
H86	8 x 8 x 6	hi-wall	50	14	\$537.70	\$444.50	\$373.00
H89	8 x 8 x 9	hi-wall	50	17	\$646.70	\$533.50	\$449.50
H812	8 x 8 x 12	hi-wall	50	21	\$765.80	\$650.60	\$547.60
L10	10 x 10	lid	50	11	\$316.80	\$225.90	\$183.20
H103	10 x 10 x 3	hi-wall	50	17	\$616.40	\$510.50	\$429.40
H106	10 x 10 x 6	hi-wall	50	22	\$761.70	\$629.00	\$528.80
H109	10 x 10 x 9	hi-wall	50	28	\$964.00	\$797.60	\$669.20
H1012	10 x 10 x 12	hi-wall	50	34	\$1,135.00	\$938.10	\$789.90
L12	12 x 12	lid	50	15	\$423.50	\$303.00	\$254.50
H123	12 x 12 x 3	hi-wall	50	24	\$896.60	\$742.20	\$623.60
H126	12 x 12 x 6	hi-wall	50	29	\$1,067.90	\$884.50	\$742.80
H129	12 x 12 x 9	hi-wall	50	37	\$1,341.10	\$1,109.70	\$933.70
H1212	12 x 12 x 12	hi-wall	50	44	\$1,552.80	\$1,286.10	\$1,081.00
L14	14 x 14	lid	50	19	\$529.40	\$376.10	\$317.30
H143	14 x 14 x 3	hi-wall	50	29	\$1,051.50	\$870.00	\$731.50
H146	14 x 14 x 6	hi-wall	50	37	\$1,379.30	\$1,142.00	\$959.20
H149	14 x 14 x 9	hi-wall	50	45	\$1,617.50	\$1,338.80	\$1,125.50
H1412	14 x 14 x 12	hi-wall	50	51	\$1,810.90	\$1,499.20	\$1,259.60
L105	10 x 5	lid	50	6	\$235.60	\$163.40	\$141.20
H1053	10 x 5 x 3	hi-wall	50	8	\$483.70	\$400.10	\$335.10
H1056	10 x 5 x 6	hi-wall	50	11	\$579.70	\$478.20	\$402.70
L138	13 x 8	lid	50	12	\$358.20	\$255.30	\$216.10
H1383	13 x 8 x 3	hi-wall	50	14	\$618.60	\$511.90	\$429.90
H1386	13 x 8 x 6	hi-wall	50	22	\$767.80	\$635.90	\$534.90
H1389	13 x 8 x 9	hi-wall	50	25	\$919.20	\$761.60	\$640.10
L1610	16 x 10	lid	50	16	\$448.80	\$319.70	\$269.80
H16103	16 x 10 x 3	hi-wall	50	23	\$903.90	\$748.20	\$628.50
H16106	16 x 10 x 6	hi-wall	50	29	\$1,087.50	\$899.40	\$756.20
H16109	16 x 10 x 9	hi-wall	50	36	\$1,293.30	\$1,071.40	\$899.50
L1912	19 x 12	lid	50	21	\$591.90	\$421.30	\$355.10
ADD FOR IMPRINTING					\$40.40	\$32.20	\$26.90

Minimum imprinting charge per STYLE is \$200.00 (Printing Not Available*)

MINIMUM ORDER FOR CUSTOM TWO-PIECE GIFTWARE BOXES IS 200 OF A SIZE AND COLOR.

SEE PRICE LIST FOR SEMIANNUAL CUSTOM HI-WALL SCHEDULE

CUSTOM HI-WALL RUN SCHEDULE

APPROVED ORDER RECEIVED BY

June 15

February 1

SHIPMENT BY

October 1

May 1



In-stock Color Two-Piece Giftware Boxes

Color lids and hi-walls. #586 Red and #2094 Black Swirl.

Complete box consists of a set-up lid and folding hi-wall. Unique hi-wall construction with gray interior board snaps into shape in seconds forming a strong, rigid, protective unit with all the appearance and strength of a set-up box, with the convenience and economy of a folding box. Lids and hi-wall priced separately.

SEE PAGE 22
OF PRODUCT CATALOG

RESALE PRICE PER 100

STOCK NUMBER	SIZE	DESCRIPTION	CASE PACK	WEIGHT PER CASE	UNDER 1000 PRICE	1000 PRICE	2500 PRICE
L4	4 x 4	lid	50	3	\$141.80	\$113.50	\$96.30
H43	4 x 4 x 3	hi-wall	50	4	\$187.00	\$154.70	\$126.10
H46	4 x 4 x 6	hi-wall	50	5	\$227.30	\$186.50	\$154.40
H49	4 x 4 x 9	hi-wall	50	8	\$303.00	\$247.70	\$201.60
L6	6 x 6	lid	50	5	\$167.60	\$134.60	\$113.20
H63	6 x 6 x 3	hi-wall	50	7	\$275.30	\$224.90	\$184.60
H66	6 x 6 x 6	hi-wall	50	9	\$317.10	\$260.00	\$214.20
H69	6 x 6 x 9	hi-wall	50	13	\$429.00	\$351.80	\$286.70
L8	8 x 8	lid	50	8	\$205.20	\$164.10	\$138.50
H83	8 x 8 x 3	hi-wall	50	10	\$364.90	\$297.50	\$243.70
H86	8 x 8 x 6	hi-wall	50	14	\$439.60	\$358.10	\$293.40
H89	8 x 8 x 9	hi-wall	50	18	\$556.90	\$459.00	\$376.30
L10	10 x 10	lid	50	11	\$246.80	\$198.60	\$167.90
H103	10 x 10 x 3	hi-wall	50	17	\$492.90	\$405.90	\$330.80
H106	10 x 10 x 6	hi-wall	50	22	\$607.20	\$498.00	\$407.70
H109	10 x 10 x 9	hi-wall	50	29	\$801.50	\$658.60	\$539.10
ADD FOR IMPRINTING					\$40.40	\$32.20	\$26.90

Minimum imprinting charge per STYLE is \$200.00 (Printing Not Available*)

*PRINTED LIDS ARE PRICED FROM THE CUSTOM LID AND HI-WALL PAGE



In-stock White Gloss TUCKit® Gift Boxes

Folding gift boxes are made with heavy white gloss board;

with gray interior. Boxes fold flat for easy storage and assemble in seconds.

SEE PAGE 23
OF PRODUCT CATALOG

RESALE PRICE PER 100

STOCK NUMBER	SIZE	DESCRIPTION	CASE PACK	WEIGHT PER CASE	UNDER 1000 PRICE	1000 PRICE	2500 PRICE
54102-000	2 x 2 x 2		200	5	\$46.90	\$38.50	\$31.80
54103-000	3 x 3 x 2		100	4	\$56.60	\$47.00	\$38.10
54180-000	3 x 3 x 3		100	5	\$62.50	\$51.70	\$42.00
54181-000	4 x 4 x 2		100	7	\$69.30	\$56.40	\$46.30
54111-000	4 x 4 x 4		100	9	\$75.70	\$62.20	\$51.40
54112-000	5 x 5 x 3		100	11	\$79.80	\$64.70	\$53.20
54115-000	6 x 4-1/2 x 4-1/2		100	15	\$98.50	\$79.90	\$66.00
54113-000	6 x 6 x 4		100	15	\$114.90	\$94.50	\$77.00
54114-000	6 x 6 x 6		100	18	\$122.40	\$101.30	\$82.80
54110-000	6-1/2 x 6-1/2 x 1-5/8	two piece pop-up	100	12	\$94.70	\$77.80	\$63.90
54107-000	7 x 7 x 7		100	28	\$162.00	\$134.10	\$109.70
54120-000	8 x 8 x 3-1/2		100	24	\$168.70	\$139.70	\$114.30
54121-000	8 x 8 x 6		50	17	\$205.70	\$166.60	\$133.60
54122-000	8 x 8 x 8-1/2		50	20	\$252.60	\$207.60	\$170.10
54116-000	8-1/2 x 8-1/2 x 2	two piece pop-up	100	20	\$147.30	\$120.50	\$98.50
54119-000	9 x 4-1/2 x 4-1/2		100	19	\$113.60	\$93.50	\$76.10
54135-000	9 x 9 x 5-1/2		50	18	\$207.90	\$171.30	\$139.60
54183-000	10 x 5 x 4		100	21	\$124.70	\$101.90	\$83.50
54143-000	10-1/2 x 10-1/2 x 2-1/2	two piece pop-up	50	19	\$201.00	\$164.90	\$134.80
54124-000	10 x 10 x 6		50	23	\$287.40	\$234.90	\$192.60
54130-000	12 x 3 x 3		100	17	\$101.30	\$83.50	\$68.00
54131-000	12 x 6 x 6		50	17	\$210.40	\$172.50	\$141.20
54125-000	12 x 12 x 2-1/2	two piece pop-up	50	23	\$266.20	\$218.20	\$179.10
54136-000*	12 x 12 x 5-1/2	two piece pop-up	50	39	\$470.80	\$385.20	\$315.20
54186-000	14 x 6 x 6		50	20	\$218.90	\$178.50	\$146.70
54128-000	14 x 14 x 3	two piece pop-up	25	17	\$328.00	\$263.80	\$216.20
54145-000	14 x 14 x 5	two piece pop-up	25	25	\$558.00	\$454.30	\$373.30
54132-000	15 x 7 x 7		50	27	\$287.40	\$235.90	\$193.50
54150-000	16 x 16 x 3	two piece pop-up	25	19	\$452.60	\$370.70	\$304.10
ADD FOR IMPRINTING					\$40.40	\$32.20	\$26.90

Minimum imprinting charge per STYLE is \$200.00

In-stock 100% Recycled Kraft TUCKit® Gift Boxes



Folding gift boxes are made with recycled natural kraft board; kraft interior. Boxes fold flat for easy storage; assemble in seconds.

SEE PAGE 24
OF PRODUCT CATALOG

RESALE PRICE PER 100

STOCK NUMBER	SIZE	DESCRIPTION	CASE PACK	WEIGHT PER CASE	UNDER 1000 PRICE	1000 PRICE	2500 PRICE
54102-197	2 x 2 x 2		200	4	\$46.90	\$38.50	\$31.80
54103-197	3 x 3 x 2		100	3	\$56.60	\$47.00	\$38.10
54180-197	3 x 3 x 3		100	4	\$62.50	\$51.70	\$42.00
54181-197	4 x 4 x 2		100	6	\$69.30	\$56.40	\$46.30
54111-197	4 x 4 x 4		100	8	\$75.70	\$62.20	\$51.40
54112-197	5 x 5 x 3		100	10	\$79.80	\$64.70	\$53.20
54115-197	6 x 4-1/2 x 4-1/2		100	13	\$98.50	\$79.90	\$66.00
54113-197	6 x 6 x 4		100	14	\$114.90	\$94.50	\$77.00
54114-197	6 x 6 x 6		100	17	\$122.40	\$101.30	\$82.80
54110-197	6-1/2 x 6-1/2 x 1-5/8	two piece pop-up	100	9	\$94.70	\$77.80	\$63.90
54107-197	7 x 7 x 7		100	25	\$162.00	\$134.10	\$109.70
54116-197	8-1/2 x 8-1/2 x 2	two piece pop-up	100	17	\$147.30	\$120.50	\$98.50
54120-197	8 x 8 x 3-1/2		100	22	\$168.70	\$139.70	\$114.30
54119-197	9 x 4-1/2 x 4-1/2		100	17	\$113.60	\$93.50	\$76.10
54183-197	10 x 5 x 4		100	19	\$124.70	\$101.90	\$83.50
54124-197	10 x 10 x 6		50	20	\$287.40	\$234.90	\$192.60
54143-197	10-1/2 x 10-1/2 x 2-1/2	two piece pop-up	50	15	\$251.20	\$164.30	\$134.80
54131-197	12 x 6 x 6		50	14	\$210.40	\$172.50	\$141.20
54125-197	12 x 12 x 2-1/2	two piece pop-up	50	19	\$266.20	\$218.20	\$179.10
54136-197*	12 x 12 x 5-1/2	two piece pop-up	50	34	\$470.80	\$385.20	\$315.20
54186-197	14 x 6 x 6		50	17	\$218.90	\$178.50	\$146.70
ADD FOR IMPRINTING					\$40.40	\$32.20	\$26.90

Minimum imprinting charge per STYLE is \$200.00 (Printing Not Available*)



In-stock Tinted Gloss TUCKit® Gift Boxes

#960 Black Gloss, #2004 Holiday Red Tinted white board with gray interior. Boxes fold flat for easy storage; assemble in seconds.

SEE PAGE 25
OF PRODUCT CATALOG

RESALE PRICE PER 100

STOCK NUMBER	SIZE	DESCRIPTION	CASE PACK	WEIGHT PER CASE	UNDER 1000 PRICE	1000 PRICE	2500 PRICE
54181*	4 x 4 x 2		100	7	\$114.90	\$93.20	\$77.00
54111	4 x 4 x 4		100	9	\$125.00	\$102.00	\$84.50
54115	6 x 4-1/2 x 4-1/2		100	15	\$162.40	\$132.40	\$108.60
54113	6 x 6 x 4		100	15	\$190.40	\$156.00	\$128.30
54114	6 x 6 x 6		100	18	\$202.30	\$167.10	\$136.80
54120	8 x 8 x 3-1/2		100	24	\$282.30	\$230.80	\$189.50
54119	9 x 4-1/2 x 4-1/2		100	19	\$188.10	\$153.90	\$125.50
54131	12 x 6 x 6		50	16	\$348.10	\$285.60	\$234.40
ADD FOR IMPRINTING					\$40.40	\$32.20	\$26.90

Minimum imprinting charge per STYLE is \$200.00 (Printing Not Available*)

* NOT Available in #960 Black Gloss



RETAIL PRICE LIST

In-stock Two Piece Pop-up Apparel Boxes

Folding apparel boxes have matching lids and bases
Boxes fold flat for easy storage; assemble in seconds.

SEE PAGE 27
OF PRODUCT CATALOG



White Gloss with gray interiors

RESALE PRICE PER 100

STOCK NUMBER	SIZE	CASE PACK	WEIGHT PER CASE	UNDER 1000 PRICE	1000 PRICE	2500 PRICE
610-000	10 x 7 x 1-1/4	100	15	\$95.70	\$79.20	\$63.40
605-000	11-1/2 x 5-1/2 x 1-1/2	100	15	\$105.10	\$85.80	\$70.90
611-000	11-1/2 x 8-1/2 x 1-5/8	100	21	\$124.00	\$103.00	\$84.40
615-000	15 x 9-1/2 x 2	100	31	\$174.30	\$143.30	\$118.50
616-000	15 x 11 x 4	50	26	\$319.20	\$259.20	\$214.70
617-000	17 x 11 x 2-1/2	50	23	\$256.70	\$210.80	\$172.60
619-000	19 x 12 x 3	50	29	\$329.50	\$270.40	\$221.20
624-000	24 x 14 x 4	25	23	\$506.60	\$417.80	\$341.80
ADD FOR IMPRINTING				\$40.40	\$32.20	\$26.90

Minimum imprinting charge per STYLE is \$200.00

Kraft - recycled kraft with pinstripe design

RESALE PRICE PER 100

STOCK NUMBER	SIZE	CASE PACK	WEIGHT PER CASE	UNDER 1000 PRICE	1000 PRICE	2500 PRICE
610-197	10 x 7 x 1-1/4	100	12	\$95.70	\$79.20	\$63.40
605-197	11-1/2 x 5-1/2 x 1-1/2	100	13	\$105.10	\$85.80	\$70.90
611-197	11-1/2 x 8-1/2 x 1-5/8	100	17	\$124.00	\$103.00	\$84.40
615-197	15 x 9-1/2 x 2	100	25	\$174.30	\$143.30	\$118.50
617-197	17 x 11 x 2-1/2	50	19	\$256.70	\$210.80	\$172.60
619-197	19 x 12 x 3	50	24	\$329.50	\$270.40	\$221.20
624-197	24 x 14 x 4	25	20	\$506.60	\$417.80	\$341.80
ADD FOR IMPRINTING				\$40.40	\$32.20	\$26.90

Minimum imprinting charge per STYLE is \$200.00

Tinted Gloss - Your choice of colors: #2004 Holiday Red & #960 Black

SEE PAGE 28
OF PRODUCT CATALOG
RESALE PRICE PER 100



STOCK NUMBER	SIZE	CASE PACK	WEIGHT PER CASE	UNDER 1000 PRICE	1000 PRICE	2500 PRICE
611	11-1/2 x 8-1/2 x 1-5/8	100	21	\$187.60	\$155.60	\$128.00
615	15 x 9-1/2 x 2	100	31	\$263.80	\$216.80	\$178.50
617	17 x 11 x 2-1/2	50	22	\$388.30	\$319.20	\$262.00
619	19 x 12 x 3	50	29	\$499.60	\$410.00	\$335.60
ADD FOR IMPRINTING				\$40.40	\$32.20	\$26.90

Minimum imprinting charge per STYLE is \$200.00

In-stock Two Piece Lock Corner Gift Boxes

Your Choice WHITE GLOSS (000) or KRAFT (501)

Folding boxes made with heavy board; telescoping lids.

White Gloss boxes have gray interiors.

SEE PAGE 29
OF PRODUCT CATALOG



RESALE PRICE PER 100

STOCK NUMBER	SIZE		CASE PACK	WEIGHT PER CASE	UNDER 1000 PRICE	1000 PRICE	2500 PRICE
LC43	4 x 4 x 3		100	11	\$58.70	\$47.90	\$38.80
LC53	5 x 5 x 3		100	16	\$72.30	\$59.00	\$48.20
LC64	6 x 4 x 4		100	17	\$68.60	\$55.90	\$45.60
LC61	6-1/2 x 6-1/2 x 1-1/2		100	13	\$64.70	\$52.90	\$43.10
LC66	6-1/2 x 6-1/2 x 4	WHITE GLOSS ONLY	100	25	\$107.20	\$87.50	\$71.50
LC6	6 x 6 x 6		100	30	\$157.30	\$128.40	\$104.70
LC7	7 x 7 x 7		100	45	\$185.20	\$151.10	\$123.30
LC82	8 x 8 x 2		100	20	\$75.70	\$61.80	\$50.50
LC83	8 x 8 x 3-1/2		100	29	\$124.00	\$101.20	\$82.70
LC94	9 x 4 x 4		100	23	\$109.30	\$89.30	\$72.80
LC95	9 x 9 x 5		50	26	\$231.70	\$189.00	\$154.30
LC9	9 x 9 x 9		50	30	\$364.20	\$297.50	\$242.80
LC105	10 x 5 x 5	WHITE GLOSS ONLY	100	34	\$162.30	\$132.40	\$108.10
LC107	10 x 7 x 2	WHITE GLOSS ONLY	100	20	\$113.00	\$92.40	\$75.20
LC108	10 x 8 x 1-1/4		100	21	\$99.50	\$81.20	\$66.20
LC10	10-1/2 x 10-1/2 x 5-1/2		50	35	\$312.60	\$255.30	\$208.40
LC118	11-1/4 x 8-1/2 x 2		125	32	\$97.50	\$79.40	\$64.80
LC112	11 x 11 x 2		100	36	\$137.10	\$111.90	\$91.30
LC113	11 x 11 x 3-3/4		50	26	\$247.30	\$201.90	\$164.90
LC126	12 x 6 x 6		50	26	\$220.60	\$180.00	\$146.80
LC122	12 x 12 x 2-1/2		50	23	\$193.20	\$157.70	\$128.70
LC125	12 x 12 x 5-1/2		50	40	\$320.80	\$261.90	\$213.60
LC128	12 x 12 x 8	KRAFT ONLY	25	26	\$507.40	\$414.30	\$338.10
LC12*	12 x 12 x 10	WHITE GLOSS ONLY	25	37	\$509.70	\$416.20	\$339.70
LC133	13 x 3-3/4 x 3-3/4	WHITE GLOSS ONLY	100	29	\$130.80	\$106.90	\$87.30
LC137	13 x 7 x 3-3/4		100	46	\$187.60	\$153.00	\$125.00
LC146	14 x 6-1/2 x 6-1/2	WHITE GLOSS ONLY	50	32	\$220.90	\$180.30	\$147.20
LC142	14 x 14 x 2		50	35	\$438.60	\$358.00	\$292.20
LC145	14 x 14 x 5	WHITE GLOSS ONLY	25	23	\$874.10	\$713.50	\$582.40
LC14*	14 x 14 x 10	WHITE GLOSS ONLY	25	37	\$301.40	\$246.20	\$200.80
LC157	15 x 7 x 7		50	36	\$133.90	\$109.30	\$89.30
LC15	15 x 10 x 2		100	36	\$535.00	\$436.90	\$356.50
LC156	15 x 15 x 6-1/2	KRAFT ONLY	25	30	\$551.70	\$450.50	\$367.60
LC163	16 x 16 x 3	WHITE GLOSS ONLY	50	40	\$627.50	\$512.20	\$417.90
LC178	17 x 8-1/2 x 8-1/2	WHITE GLOSS ONLY	25	27	\$250.00	\$204.10	\$166.60
LC17	17 x 11 x 2-1/2	KRAFT ONLY	50	27	\$327.00	\$267.00	\$218.10
LC182	18 x 14 x 2	WHITE GLOSS ONLY	25	29	\$558.70	\$456.10	\$372.30
LC184	18-1/2 x 18-1/2 x 4-1/2	WHITE GLOSS ONLY	25	30	\$292.50	\$238.70	\$194.90
LC193	19 x 12 x 3	WHITE GLOSS ONLY	50	29	\$544.30	\$444.50	\$362.80
LC25	25 x 15 x 5	KRAFT ONLY	25	36	\$387.70	\$316.60	\$258.40
ADD FOR IMPRINTING					\$59.80	\$47.60	\$39.80

Minimum imprinting charge per STYLE is \$200.00 (Printing Not Available*)

* Hot Stamping not available

In-stock Pharmaceutical Boxes

SEE PAGE 30
OF PRODUCT CATALOG



White Slide Boxes

(Matchboxes) ideal for storing Pharmaceuticals

RESALE PRICE PER 100

STOCK NUMBER	SIZE	CASE PACK	WEIGHT PER CASE	UNDER 1000 PRICE	1000 PRICE	2500 PRICE
47	2-1/8 x 1-1/8 x 5/8	72	1	\$87.30	\$70.80	\$57.40
48	2-5/16 x 1-5/16 x 13/16	72	1.5	\$87.50	\$65.90	\$57.50
49	2-9/16 x 1-9/16 x 1	72	2	\$110.30	\$89.70	\$72.00
49X	2-7/8 x 1-7/8 x 1-1/8	72	2	\$115.70	\$93.30	\$75.40
49XX	3-1/8 x 2-1/16 x 1-1/4	72	2.5	\$133.40	\$107.40	\$86.90
49XXX	3-1/2 x 2-3/8 x 1-3/8	72	3.5	\$154.10	\$124.70	\$100.60
126	3 x 1-3/4 x 3/4	72	2	\$103.40	\$83.30	\$67.50
126X	3-1/4 x 2 x 7/8	72	2	\$136.20	\$110.00	\$88.50
126XX	3-7/16 x 2-5/16 x 1-1/8	72	3	\$150.50	\$121.50	\$98.00
127	2-1/2 x 1-1/2 x 5/8	72	1.5	\$104.40	\$84.20	\$68.00
128	2 x 1-1/4 x 7/16	72	1	\$109.10	\$87.50	\$71.30



Telescope Boxes - White bases and covers. Several styles are available with thumb-holes for easy opening.

RESALE PRICE PER 100

STOCK NUMBER	SIZE	CASE PACK	WEIGHT PER CASE	UNDER 1000 PRICE	1000 PRICE	2500 PRICE
31XX	2 x 2 x 7/8	144	4	\$107.90	\$87.60	\$71.30
706	2-3/4 x 1-3/4 x 1-1/16	72	4	\$121.60	\$99.00	\$80.30
707	3 x 2 x 1-1/4	72	3	\$147.20	\$119.60	\$97.20
709	3-5/8 x 2-1/2 x 1-1/2	72	5	\$201.70	\$163.90	\$133.40



Suppository Boxes

Contains partitions: 6, 12 or 24.

RESALE PRICE PER 100

STOCK NUMBER	SIZE	CASE PACK	WEIGHT PER CASE	UNDER 1000 PRICE	1000 PRICE	2500 PRICE
6R	1-11/16 x 1-1/8 x 1-7/16	36	1	\$371.70	\$299.60	\$241.90
12R	2-1/4 x 1-11/16 x 1-7/16	36	2	\$377.80	\$304.70	\$246.20
24R	3-3/8 x 2-1/4 x 1-7/16	36	3	\$449.00	\$362.30	\$292.50

Folding Pill Cartons

RESALE PRICE PER 100



STOCK NUMBER	SIZE	CASE PACK	WEIGHT PER CASE	UNDER 1000 PRICE	1000 PRICE	2500 PRICE
3	1-1/4 x 9/16 x 2-1/4	500	4	\$26.80	\$21.70	\$17.70
5	1-1/2 x 3/4 x 2-9/16	500	5	\$32.60	\$26.80	\$21.70



Ointment Tube Telescope Boxes

RESALE PRICE PER 100

STOCK NUMBER	SIZE	CASE PACK	WEIGHT PER CASE	UNDER 1000 PRICE	1000 PRICE	2500 PRICE
1-OZ	4-13/16 x 1-5/8 x 1-1/8	72	4	\$147.60	\$119.90	\$97.40
2-OZ	6-1/2 x 1-11/16 x 1-1/8	72	5	\$170.80	\$138.80	\$112.80

BAKERY & FOOD SERVICE BOXES

In-stock Cake, Pastry & Pie Bakery Boxes
 One-piece lock corner, 100% recycled material;
 white outside, kraft interior

SEE PAGE 31-32
 OF PRODUCT CATALOG



RESALE PRICE PER BUNDLE

STOCK NUMBER	SIZE	BUNDLE PACK	WEIGHT PER BDL	UNDER 1000 PRICE	1000 PRICE	2500 PRICE
444B-261	4 x 4 x 4	200	16	\$80.20	\$65.30	\$53.10
524B-261	5-1/2 x 2-3/4 x 4	250	21	\$87.40	\$71.00	\$57.70
542B-261	5-1/2 x 4 x 2-7/8	250	20	\$86.00	\$69.90	\$56.90
554B-261	5-1/2 x 5-1/2 x 4	250	31	\$125.00	\$101.70	\$82.70
632B-261	6-1/2 x 3-3/4 x 2-1/8	250	16	\$80.10	\$65.10	\$53.00
663B-261	6 x 6 x 3	250	27	\$113.80	\$92.50	\$75.20
63B-261	6-1/2 x 6-1/2 x 3	250	29	\$130.00	\$105.70	\$86.00
64B-261	6-1/2 x 6-1/2 x 4	250	35	\$154.00	\$125.20	\$101.80
642B-261	6-1/2 x 4 x 2-3/4	250	24	\$105.80	\$86.10	\$70.00
6625B-261	6 x 6 x 2-1/2	250	26	\$113.00	\$91.80	\$74.60
664B-261	6 x 6 x 4	250	36	\$144.80	\$117.70	\$95.80
753B-261	7 x 5 x 3	250	24	\$137.90	\$112.10	\$91.20
762B-261	7 x 6 x 2-1/4	250	27	\$131.70	\$107.10	\$87.10
773B-261	7 x 7 x 3	250	35	\$142.40	\$115.80	\$94.10
774B-261	7 x 7 x 4	200	34	\$152.10	\$123.70	\$100.60
775B-261	7 x 7 x 5	100	22	\$91.40	\$74.40	\$60.50
844B-261	8 x 4 x 4	200	24	\$98.60	\$80.10	\$65.10
853B-261	8 x 5-1/2 x 3	250	30	\$137.50	\$111.80	\$90.80
854B-261	8 x 5-1/2 x 4	250	39	\$154.10	\$125.30	\$101.90
882B-261	8 x 8 x 2-1/2	250	37	\$136.10	\$110.70	\$89.90
883B-261	8 x 8 x 3	250	41	\$167.80	\$136.40	\$110.90
884B-261	8 x 8 x 4	200	40	\$156.20	\$127.00	\$103.20
885B-261	8 x 8 x 5	100	24	\$96.80	\$78.70	\$64.00
886B-261	8 x 8 x 6	100	27	\$126.50	\$102.80	\$83.60
954B-261	9 x 5 x 4	250	39	\$144.80	\$117.70	\$95.80
963B-261	9 x 6 x 3	250	33	\$151.30	\$123.10	\$100.10
992B-261	9 x 9 x 2-1/2	250	41	\$165.20	\$134.30	\$109.20
993B-261	9 x 9 x 3	250	51	\$188.10	\$152.90	\$124.30
994B-261	9 x 9 x 4	200	49	\$175.70	\$142.80	\$116.00
995B-261	9 x 9 x 5	100	30	\$119.70	\$97.30	\$79.10
1062B-261	10 x 6 x 2-1/2	250	32	\$139.00	\$113.00	\$91.80
1063B-261	10-1/4 x 6-1/4 x 3-1/2	250	40	\$211.10	\$171.70	\$139.60
1073B-261	10-1/2 x 7-1/2 x 2-3/4	250	49	\$211.50	\$171.90	\$139.80
106753B-261	10-3/4 x 6-3/4 x 3-5/8	250	48	\$217.40	\$176.90	\$143.80
1074B-261	10 x 7 x 4	100	18	\$97.40	\$79.30	\$64.40
1082B-261	10-1/2 x 8 x 2-1/2	250	42	\$205.30	\$166.90	\$135.60
10102B-261	10 x 10 x 2-1/2	250	50	\$203.70	\$165.70	\$134.70
10103B-261	10 x 10 x 3	250	58	\$221.70	\$180.20	\$146.50
10104B-261	10 x 10 x 4	100	26	\$119.80	\$97.40	\$79.30
10105B-261	10 x 10 x 5	100	36	\$142.60	\$115.90	\$94.20
101055B-261	10 x 10 x 5-1/2	100	41	\$167.40	\$136.10	\$110.70
10106B-261	10 x 10 x 6	100	44	\$175.80	\$142.90	\$116.30
1183B-261	11 x 8 x 3	200	41	\$161.60	\$131.40	\$106.90
1184B-261	11 x 8 x 4	200	53	\$205.10	\$166.80	\$135.50
1293B-261	12 x 9 x 3	100	24	\$118.80	\$96.70	\$78.50
12933B-261	12 x 9 x 3 (with 3" Tuck Flap)	100	25	\$122.60	\$99.70	\$81.10
1294B-261	12 x 9 x 4	100	25	\$123.70	\$100.60	\$81.80
12123B-261	12 x 12 x 2-3/4	100	34	\$148.40	\$120.70	\$98.10
12124B-261	12 x 12 x 4	100	41	\$163.10	\$132.60	\$107.90
12125B-261	12 x 12 x 5	100	48	\$197.70	\$160.70	\$130.60
12126B-261	12 x 12 x 6	50	27	\$117.40	\$95.30	\$77.60
13932B-261	13 x 9 x 3-1/4	200	60	\$236.80	\$192.50	\$156.60
14104B-261	14 x 10 x 4	100	43	\$151.20	\$123.00	\$100.00
14105B-261	14-1/2 x 10-1/2 x 5 (1/4 Sheet)	100	52	\$237.40	\$193.10	\$156.90
14145B-261	14 x 14 x 5-1/2	50	38	\$142.90	\$116.30	\$94.50
14146B-261	14 x 14 x 6	50	35	\$145.90	\$118.60	\$96.40
15112B-261	15 x 11-1/2 x 2 (Glued 6 Corner Beers)	100	36	\$160.80	\$130.80	\$106.30
15113B-261	15 x 11 x 3-1/2	100	44	\$155.70	\$126.60	\$102.90
15115B-261	15 x 11 x 5	100	53	\$220.20	\$179.10	\$145.60

FOR HOT STAMPING SEE CHART ON PAGE 37

In-stock Cake, Pastry & Pie Bakery Boxes
 One-piece lock corner, 100% recycled material;
 white outside, kraft interior

**SEE PAGE 32
 OF PRODUCT CATALOG**

RESALE PRICE PER BUNDLE

STOCK NUMBER	SIZE	BUNDLE PACK	WEIGHT PER BDL	UNDER 1000 PRICE	1000 PRICE	2500 PRICE
16166B-261	15-7/8 x 15-7/8 x 5-7/8	50	43	\$212.70	\$172.90	\$140.60
18455B-261	18 x 14 x 5	50	41	\$165.50	\$134.50	\$109.30
19144B-261	19 x 14 x 4	50	32	\$140.30	\$114.10	\$92.90
1914B1-261	19 x 14 x 4-1/2	50	40	\$164.20	\$133.60	\$108.60
20144B-261	20 x 14 x 4	50	39	\$184.10	\$149.60	\$121.60
1914B2-261	19 x 14 x 5	50	43	\$175.20	\$142.40	\$115.80
26184B-261	25-7/8 x 18-3/8 x 3-7/8	25	30	\$154.90	\$125.90	\$102.40
14102B-261	14-1/2 x 10-3/8 x 2 (1/4 Sheet Cake Cover)	100	14	\$94.10	\$76.50	\$62.20
18132B-261	18-1/2 x 13-1/4 x 2 (1/2 Sheet Cake Cover)	100	22	\$148.30	\$120.50	\$98.00
26182B-261	26-1/2 x 18-1/4 x 2 (Full Sheet Cake Cover)	100	46	\$182.70	\$148.50	\$120.90
26194BF-408	26-7/8 x 18-7/8 x 4 (B Flute Tray)	25	17	\$130.30	\$105.80	\$86.10
26193B-261	27-1/2 x 19 x 3 (Full Sheet Cake Cover)	50	29	\$142.00	\$115.40	\$93.90
28174B-261	28 x 17-3/4 x 4-7/8	25	33	\$178.00	\$144.60	\$117.60

FOR HOT STAMPING SEE CHART ON PAGE 37

In-stock Full Telescope, Two-Piece Lock Corner Boxes

100% recycled material;
 white outside, kraft interior

**SEE PAGE 33
 OF PRODUCT CATALOG**

RESALE PRICE PER BUNDLE

STOCK NUMBER	SIZE	BUNDLE PACK	WEIGHT PER BDL	UNDER 1000 PRICE	1000 PRICE	2500 PRICE
14103B-261	14 x 10 x 3	100	34	\$143.50	\$116.60	\$94.80
17113B-261	17 x 11 x 3	100	43	\$179.20	\$145.70	\$118.50
18133B-261	18 x 13 x 3	50	30	\$127.20	\$103.50	\$84.10
19133B-261	19 x 13 x 3	50	32	\$148.50	\$120.90	\$98.30
19144.2B-261	19-1/2 x 14 x 4	50	42	\$158.60	\$128.90	\$104.80
23123B-261	23 x 12 x 3-1/2	50	43	\$165.00	\$134.20	\$109.10
261844B-261	26-1/2 x 18-1/2 x 4	25	35	\$152.80	\$124.20	\$100.90

FOR HOT STAMPING SEE CHART ON PAGE 37



In-stock Donut Boxes & Trays

Natural Kraft (501), White SBS (126) or
 White Outside and Kraft Interior (261)

**SEE PAGE 33
 OF PRODUCT CATALOG**

RESALE PRICE PER CASE

STOCK NUMBER	SIZE	CASE PACK	WEIGHT PER CASE	UNDER 1000 PRICE	1000 PRICE	2500 PRICE
Automatic Trays, 4 Corner Glued						
1393DN-261	13-1/2 X 9 X 3 (#1)	250	41	\$153.60	\$124.90	\$101.50
1393DN-501	13-1/2 X 9 X 3 (#1)	250	33	\$169.20	\$137.70	\$111.90
13103DN-261	13-1/2 X 9-7/8 X 3-3/8 (#2)	250	47	\$178.60	\$145.20	\$118.10
13103DN-501	13-1/2 X 9-7/8 X 3-3/8 (#2)	250	37	\$143.70	\$116.80	\$95.00
14103DN-261	14 X 10 X 3	200	38	\$160.30	\$130.40	\$106.00
16122DN-261	16 X 12 X 2-1/2	150	32	\$185.10	\$150.50	\$122.40
17112DN-261	17-1/4 X 11 X 2-1/2 (#3)	200	45	\$202.10	\$164.20	\$133.60
17112DN-501	17-1/4 X 11 X 2-1/2 (#3)	200	34	\$137.80	\$112.00	\$91.10
Automatic Donut Boxes, Six Corner Glued						
973B-126	9-5/8 x 6-3/4 x 3	250	38	\$222.20	\$180.70	\$146.80
15112B-261	15 x 11-1/2 x 2	100	36	\$160.80	\$130.80	\$106.30
151125B-126	15 x 11-1/2 x 2-1/4	100	31	\$170.90	\$139.00	\$113.00
171103B-261	17 x 11 x 3	125	54	\$255.80	\$207.90	\$169.00
Two Piece Donut Boxes, Lock Corner						
16113B-261	16 x 11 x 3-1/2	100	51	\$231.20	\$187.90	\$152.80
171135B-261	17 x 11 x 3-1/2	100	51	\$218.50	\$177.60	\$144.50

FOR HOT STAMPING SEE CHART ON PAGE 37





In-stock Chocolate Cake, Pastry & Pie Boxes
 One-piece lock corner; 100% recycled material;
 kraft interior

SEE PAGE 34
 OF PRODUCT CATALOG

RESALE PRICE PER BUNDLE

STOCK NUMBER	SIZE	BUNDLE PACK	WEIGHT PER BDL	UNDER 1000 PRICE	1000 PRICE	2500 PRICE
444B-513	4 x 4 x 4	200	13	\$83.80	\$68.10	\$55.30
542B-513	5-1/2 x 4 x 2-7/8	250	16	\$97.40	\$79.30	\$64.40
632B-513	6-1/2 x 3-3/4 x 2-1/8	250	12	\$80.40	\$65.40	\$53.20
663B-513	6 x 6 x 3	250	21	\$122.50	\$99.60	\$81.00
753B-513	7 x 5 x 3	250	21	\$140.90	\$114.60	\$93.10
774B-513	7 x 7 x 4	200	31	\$154.00	\$125.20	\$101.80
844B-513	8 x 4 x 4	200	20	\$102.40	\$83.20	\$67.70
853B-513	8 x 5-1/2 x 3	250	26	\$146.20	\$118.80	\$96.70
854B-513	8 x 5-1/2 x 4	250	31	\$171.50	\$139.40	\$113.50
883B-513	8 x 8 x 3	250	32	\$179.80	\$146.20	\$118.80
884B-513	8 x 8 x 4	200	36	\$152.70	\$124.10	\$100.80
885B-513	8 x 8 x 5	100	21	\$99.50	\$80.80	\$65.60
954B-513	9 x 5 x 4	250	32	\$161.80	\$131.60	\$107.00
992B-513	9 x 9 x 2-1/2	250	32	\$188.20	\$153.00	\$124.40
994B-513	9 x 9 x 4	200	41	\$187.20	\$152.20	\$123.80
995B-513	9 x 9 x 5	100	23	\$127.50	\$103.60	\$84.30
1074B-513	10 x 7 x 4	100	16	\$100.20	\$81.50	\$66.20
10102B-513	10 x 10 x 2-1/2	250	43	\$216.60	\$176.20	\$143.30
10103B-513	10 x 10 x 3	250	50	\$231.80	\$188.50	\$153.20
10104B-513	10 x 10 x 4	100	23	\$127.10	\$103.40	\$84.00
10105B-513	10 x 10 x 5	100	33	\$147.10	\$119.60	\$97.20
10106B-513	10 x 10 x 6	100	40	\$184.10	\$149.60	\$121.60
1294B-513	12 x 9 x 4	100	23	\$133.30	\$108.40	\$88.00
12125B-513	12 x 12 x 5	100	39	\$210.60	\$171.30	\$139.20
12126B-513	12 x 12 x 6	50	23	\$122.00	\$99.10	\$80.60
14104B-513	14 x 10 x 4 (1/4 Sheet Cake)	100	33	\$151.80	\$123.30	\$100.20
14146B-513	14 x 14 x 6	50	29	\$153.80	\$125.00	\$101.70
19144B-513	19 x 14 x 4 (1/2 Sheet Cake)	50	31	\$150.80	\$122.60	\$99.70
20144B-513	20 x 14 x 4 (1/2 Sheet Cake)	50	36	\$195.30	\$158.80	\$129.10
19144.2B-513	19-1/2 x 14 x 4 (1/2 Sheet, Two Piece Lock Corner)	50	44	\$169.50	\$137.80	\$112.00

FOR HOT STAMPING SEE CHART ON PAGE 37

In-stock Strawberry Cake, Pastry & Pie Boxes

One-piece lock corner; 100% recycled material; kraft interior

SEE PAGE 35
OF PRODUCT CATALOG

RESALE PRICE PER BUNDLE

STOCK NUMBER	SIZE	BUNDLE PACK	WEIGHT PER BDL	UNDER 1000 PRICE	1000 PRICE	2500 PRICE
444B-195	4 x 4 x 4	200	15	\$79.40	\$64.50	\$52.50
542B-195	5-1/2 x 4 x 2-7/8	250	19	\$90.50	\$73.50	\$59.80
632B-195	6-1/2 x 3-3/4 x 2-1/8	250	16	\$79.10	\$64.30	\$52.20
663B-195	6 x 6 x 3	250	25	\$119.10	\$96.80	\$78.70
753B-195	7 x 5 x 3	250	24	\$137.10	\$111.40	\$90.60
774B-195	7 x 7 x 4	200	33	\$150.20	\$122.10	\$99.20
844B-195	8 x 4 x 4	200	22	\$99.50	\$80.80	\$65.60
853B-195	8 x 5-1/2 x 3	250	30	\$135.50	\$110.20	\$89.60
854B-195	8 x 5-1/2 x 4	250	41	\$159.40	\$129.50	\$105.30
883B-195	8 x 8 x 3	250	40	\$166.90	\$135.60	\$110.30
884B-195	8 x 8 x 4	200	37	\$146.50	\$119.10	\$96.80
885B-195	8 x 8 x 5	100	24	\$92.00	\$74.80	\$60.80
954B-195	9 x 5 x 4	250	42	\$150.20	\$122.10	\$99.20
992B-195	9 x 9 x 2-1/2	250	40	\$175.30	\$142.60	\$115.90
994B-195	9 x 9 x 4	200	46	\$174.60	\$142.00	\$115.40
995B-195	9 x 9 x 5	100	29	\$118.60	\$96.40	\$78.40
1074B-195	10 x 7 x 4	100	19	\$97.40	\$79.30	\$64.40
10102B-195	10 x 10 x 2-1/2	250	52	\$201.90	\$164.10	\$133.40
10103B-195	10 x 10 x 3	250	58	\$216.20	\$175.70	\$142.80
10104B-195	10 x 10 x 4	100	28	\$118.10	\$95.90	\$78.00
10105B-195	10 x 10 x 5	100	35	\$142.60	\$115.90	\$94.20
10106B-195	10 x 10 x 6	100	40	\$170.90	\$139.00	\$113.00
1294B-195	12 x 9 x 4	100	30	\$123.70	\$100.60	\$81.80
12125B-195	12 x 12 x 5	100	45	\$195.40	\$158.90	\$129.30
12126B-195	12 x 12 x 6	50	23	\$113.20	\$92.20	\$74.90
14104B-195	14 x 10 x 4 (1/4 Sheet Cake)	100	37	\$151.20	\$123.00	\$100.00
14146B-195	14 x 14 x 6	50	33	\$142.90	\$116.30	\$94.50
19144B-195	19 x 14 x 4 (1/2 Sheet Cake)	50	35	\$140.30	\$114.10	\$92.90
20144B-195	20 x 14 x 4 (1/2 Sheet Cake)	50	37	\$181.20	\$147.30	\$119.70
19144.2B-195	19-1/2 x 14 x 4 (1/2 Sheet, Two Piece Lock Corner)	50	40	\$157.80	\$128.20	\$104.30

FOR HOT STAMPING SEE CHART ON PAGE 37



In-stock Kraft Cake, Pastry & Pie Boxes

One-piece lock corner; 100% recycled material; kraft interior

SEE PAGE 36
OF PRODUCT CATALOG

RESALE PRICE PER BUNDLE

STOCK NUMBER	SIZE	BUNDLE PACK	WEIGHT PER BDL	UNDER 1000 PRICE	1000 PRICE	2500 PRICE
444B-194	4 x 4 x 4	200	16	\$76.20	\$61.90	\$50.30
542B-194	5-1/2 x 4 x 2-7/8	250	14	\$86.80	\$70.60	\$57.50
632B-194	6-1/2 x 3-3/4 x 2-1/8	250	14	\$76.20	\$61.90	\$50.30
663B-194	6 x 6 x 3	250	23	\$114.60	\$93.10	\$75.70
753B-194	7 x 5 x 3	250	23	\$130.80	\$106.30	\$86.40
774B-194	7 x 7 x 4	200	35	\$143.10	\$116.40	\$94.60
844B-194	8 x 4 x 4	200	22	\$94.80	\$77.10	\$62.60
853B-194	8 x 5-1/2 x 3	250	27	\$130.00	\$105.70	\$86.00
854B-194	8 x 5-1/2 x 4	250	34	\$152.90	\$124.30	\$101.10
883B-194	8 x 8 x 3	250	41	\$160.30	\$130.40	\$106.00
884B-194	8 x 8 x 4	200	38	\$135.60	\$110.30	\$89.70
885B-194	8 x 8 x 5	100	22	\$92.30	\$75.00	\$61.00
954B-194	9 x 5 x 4	250	39	\$144.50	\$117.50	\$95.50
992B-194	9 x 9 x 2-1/2	250	39	\$168.70	\$137.20	\$111.60
994B-194	9 x 9 x 4	200	44	\$168.50	\$137.00	\$111.30
995B-194	9 x 9 x 5	100	28	\$114.10	\$92.90	\$75.50
1074B-194	10 x 7 x 4	100	18	\$93.60	\$76.20	\$61.90
10102B-194	10 x 10 x 2-1/2	250	47	\$188.60	\$153.30	\$124.70
10103B-194	10 x 10 x 3	200	53	\$174.70	\$142.10	\$115.50
10104B-194	10 x 10 x 4	100	26	\$110.70	\$89.90	\$73.10
10105B-194	10 x 10 x 5	100	36	\$137.20	\$111.60	\$90.70
10106B-194	10 x 10 x 6	100	40	\$164.20	\$133.60	\$108.60
1294B-194	12 x 9 x 4	100	26	\$119.10	\$96.80	\$78.70
12125B-194	12 x 12 x 5	100	45	\$188.10	\$152.90	\$124.30
12126B-194	12 x 12 x 6	50	26	\$109.10	\$88.60	\$72.10
14104B-194	14 x 10 x 4 (1/4 Sheet Cake)	100	39	\$145.50	\$118.30	\$96.20
14146B-194	14 x 14 x 6	50	31	\$137.50	\$111.80	\$90.80
19144B-194	19 x 14 x 4 (1/2 Sheet Cake)	50	34	\$135.30	\$109.90	\$89.40
20144B-194	20 x 14 x 4 (1/2 Sheet Cake)	50	36	\$173.90	\$141.50	\$114.90
19144.2B-194	19-1/2 x 14 x 4 (1/2 Sheet, Two Piece Lock Corner)	50	42	\$151.90	\$123.50	\$100.40

FOR HOT STAMPING SEE CHART ON PAGE 37



RETAIL PRICE LIST

In-stock Black Licorice Cake, Pastry & Pie Boxes
 One-Piece Lock Corner, Gloss Black Outside, White Interior,
 Compatible with most Cupcake Inserts

SEE PAGE 37
 OF PRODUCT CATALOG

RESALE PRICE PER BUNDLE



STOCK NUMBER	SIZE	BUNDLE PACK	WEIGHT PER BDL	UNDER 1000 PRICE	1000 PRICE	2500 PRICE
444B-960	4 x 4 x 4	100	7	\$78.20	\$63.60	\$51.60
632B-960	6-1/4 x 3-3/4 x 2-1/8	100	5	\$70.30	\$57.10	\$46.50
774B-960	7 x 7 x 4	100	13	\$123.70	\$100.60	\$81.80
844B-960	8 x 4 x 4	100	9	\$93.10	\$75.70	\$61.60
853B-960	8 x 5-1/2 x 3	100	12	\$94.80	\$77.10	\$62.60
884B-960	8 x 8 x 4	100	16	\$137.00	\$111.30	\$90.50
954B-960	9 x 5 x 4	100	13	\$112.50	\$91.40	\$74.40
10102B-960	10 x 10 x 2-1/2	100	19	\$139.30	\$113.20	\$92.20
10104B-960	10 x 10 x 4	100	25	\$169.50	\$137.80	\$112.00
10105B-960	10 x 10 x 5	100	29	\$204.30	\$166.10	\$135.00
14104B-960	14 x 10 x 4 (1/4 Sheet Cake)	100	30	\$224.50	\$182.50	\$148.30
19144B-960	19 x 14 x 4 (1/2 Sheet Cake)	50	27	\$190.90	\$155.10	\$126.10

FOR HOT STAMPING SEE CHART ON PAGE 37

In-stock Cupcake Inserts
 100% Recycled material
 white outside, kraft interior. Reversible.

SEE PAGE 38
 OF PRODUCT CATALOG

RESALE PRICE PER BUNDLE



Baking Cup Sizing For Inserts:

- Mini:**
 - Overall Diameter=3-7/8
 - Bottom Diameter=1-5/8
 - Wall Ht=1-1/8
 - 2 oz Cupcake
- Regular:**
 - Overall Diameter=4-3/4
 - Bottom Diameter=2
 - Wall Ht=1-3/8
 - 2-5/8 oz Cupcake
- Jumbo:**
 - Overall Diameter=6
 - Bottom Diameter=2-1/4
 - Wall Ht=1-7/8
 - 5 oz Cupcake

STOCK NUMBER	SIZE		BUNDLE PACK	WEIGHT PER BDL	UNDER 1000 PRICE	1000 PRICE	2500 PRICE
44MCI-261	3-15/16 x 3-15/16 x 3/4	mini 1 cup	100	2	\$54.40	\$44.20	\$36.00
44CI-261	3-15/16 x 3-15/16 x 7/8	1 cup	100	2	\$47.70	\$38.80	\$31.50
44JCI-260	3-15/16 x 3-15/16 x 5/8	jumbo 1 cup	100	1	\$47.90	\$39.00	\$31.70
84MCI-261	7-15/16 x 3-15/16 x 3/4	mini 2 cup	100	3	\$62.70	\$51.00	\$41.40
84CI-261	7-15/16 x 3-15/16 x 7/8	2 cup	100	2	\$53.30	\$43.50	\$35.30
84JCI-261	7-15/16 x 3-15/16 x 5/8	jumbo 2 cup	100	2	\$54.20	\$44.10	\$35.80
77MCI-261	6-15/16 x 6-15/16 x 3/4	mini 4 cup	100	3	\$62.80	\$51.10	\$41.60
77CI-261	6-15/16 x 6-15/16 x 7/8	4 cup	100	3	\$53.80	\$43.70	\$35.60
88JCI-261	7-15/16 x 7-15/16 x 5/8	jumbo 4 cup	100	3	\$61.90	\$50.30	\$40.90
107MCI-261	9-15/16 x 6-15/16 x 3/4	mini 6 cup	100	4	\$70.10	\$57.00	\$46.40
1010MCI-261	9-15/16 x 9-15/16 x 3/4	mini 12 cup	100	5	\$73.10	\$59.40	\$48.30
1010CI-261	9-15/16 x 9-15/16 x 7/8	6 cup	100	6	\$66.40	\$53.90	\$43.80
129JCI-261	11-15/16 x 8-15/16 x 5/8	jumbo 6 cup	100	5	\$78.20	\$63.60	\$51.60
1410CI-261	13-15/16 x 9-15/16 x 7/8	12 cup	100	6	\$79.50	\$64.70	\$52.60
1410MCI-261	13-15/16 x 9-15/16 x 3/4	mini 24 cup	100	6	\$86.40	\$70.30	\$57.10
1914CI-261	18-15/16 x 13-15/16 x 5/8	24 cup	100	11	\$131.90	\$107.30	\$87.30
1914JCI-261	18-15/16 x 13-15/16 x 5/8	jumbo 12 cup	100	11	\$129.30	\$105.10	\$85.50

In-stock Cupcake Boxes

One-Piece - Lock Corner
 #126 White SBS or #501 Natural Kraft

SEE PAGE 39
 OF PRODUCT CATALOG

RESALE PRICE PER BUNDLE

STOCK NUMBER	SIZE		BUNDLE PACK	WEIGHT PER BDL	UNDER 1000 PRICE	1000 PRICE	2500 PRICE
444W-126	4 x 4 x 4	1 cup	100	6	\$95.30	\$77.60	\$63.10
842W-126	8 x 4 x 2-1/2	mini 2 cup	100	6	\$103.90	\$84.50	\$68.70
844W-126	8 x 4 x 4	2 cup/jumbo 2 cup	100	9	\$113.00	\$91.80	\$74.60
772W-126	7 x 7 x 2-1/2	mini 4 cup	100	9	\$112.10	\$91.20	\$74.00
774W-126	7 x 7 x 4	4 cup	100	12	\$129.80	\$105.60	\$85.80
884W-126	8 x 8 x 4	jumbo 4 cup	100	14	\$138.10	\$112.30	\$91.30
1072W-126	10 x 7 x 2-1/2	mini 6 cup	100	11	\$123.70	\$100.60	\$81.80
10104W-126	10 x 10 x 4	6 cup	100	19	\$190.40	\$154.90	\$125.90
1294W-126	12 x 9 x 4	jumbo 6 cup	100	23	\$200.60	\$163.10	\$132.60
101025W-126	10 x 10 x 2-1/2	mini 12 cup	100	15	\$175.20	\$142.40	\$115.80
14104W-126	14 x 10 x 4	12 cup	100	28	\$222.70	\$181.00	\$147.20
19144W-126	19 x 14 x 4	jumbo 12 cup	50	24	\$191.40	\$155.60	\$126.50
141025W-126	14 x 10 x 2-1/2	mini 24 cup	100	24	\$197.10	\$160.30	\$130.40



STOCK NUMBER	SIZE		BUNDLE PACK	WEIGHT PER BDL	UNDER 1000 PRICE	1000 PRICE	2500 PRICE
444W-501	4 x 4 x 4	1 cup	100	6	\$86.80	\$70.60	\$57.50
842W-501	8 x 4 x 2-1/2	mini 2 cup	100	6	\$95.70	\$77.70	\$63.20
844W-501	8 x 4 x 4	2 cup/jumbo 2 cup	100	8	\$103.50	\$84.10	\$68.40
772W-501	7 x 7 x 2-1/2	mini 4 cup	100	8	\$102.50	\$83.30	\$67.80
774W-501	7 x 7 x 4	4 cup	100	10	\$110.70	\$89.90	\$73.10
884W-501	8 x 8 x 4	jumbo 4 cup	100	14	\$120.50	\$98.00	\$79.60
1072W-501	10 x 7 x 2-1/2	mini 6 cup	100	10	\$112.50	\$91.40	\$74.40
10104W-501	10 x 10 x 4	6 cup	100	20	\$171.40	\$139.30	\$113.20
1294W-501	12 x 9 x 4	jumbo 6 cup	100	21	\$174.70	\$142.10	\$115.50
101025W-501	10 x 10 x 2-1/2	mini 12 cup	100	15	\$157.50	\$128.10	\$104.20
14104W-501	14 x 10 x 4	12 cup	100	25	\$199.30	\$162.00	\$131.70
19144W-501	19 x 14 x 4	jumbo 12 cup	50	31	\$174.60	\$142.00	\$115.40
141025W-501	14 x 10 x 2-1/2	mini 24 cup	100	20	\$173.00	\$140.70	\$114.40

In-stock Windowed Cupcake Boxes

One-Piece - Lock Corner. 100% Recycled Material, Kraft Interior
 #195 Strawberry and #513 Chocolate

SEE PAGE 40
 OF PRODUCT CATALOG

RESALE PRICE PER BUNDLE

STOCK NUMBER	SIZE		BUNDLE PACK	WEIGHT PER BDL	UNDER 1000 PRICE	1000 PRICE	2500 PRICE
444W-195*	4 x 4 x 4	1 cup	200	15	\$131.40	\$106.90	\$86.80
844W-195*	8 x 4 x 4	2 cup/jumbo 2 cup	200	22	\$157.40	\$128.00	\$104.10
774W-195*	7 x 7 x 4	4 cup/mini 4 cup	200	30	\$197.10	\$160.30	\$130.40
884W-195*	8 x 8 x 4	4 cup jumbo	200	37	\$200.80	\$163.30	\$132.70
10104W-195	10 x 10 x 4	6 cup/mini 12 cup	100	29	\$140.00	\$113.80	\$92.50
14104W-195	14 x 10 x 4	12 cup/mini 24 cup	100	33	\$171.90	\$139.80	\$113.60
19144W-195	19 x 14 x 4	12 cup jumbo	50	31	\$167.40	\$136.10	\$110.70



STOCK NUMBER	SIZE		BUNDLE PACK	WEIGHT PER BDL	UNDER 1000 PRICE	1000 PRICE	2500 PRICE
444W-513*	4 x 4 x 4	1 cup	200	13	\$138.10	\$112.30	\$91.30
844W-513*	8 x 4 x 4	2 cup/jumbo 2 cup	200	18	\$164.60	\$133.80	\$108.80
774W-513*	7 x 7 x 4	4 cup/mini 4 cup	200	27	\$218.90	\$178.00	\$144.60
884W-513*	8 x 8 x 4	4 cup jumbo	200	30	\$216.60	\$176.20	\$143.30
10104W-513	10 x 10 x 4	6 cup/mini 12 cup	100	26	\$148.40	\$120.70	\$98.10
14104W-513	14 x 10 x 4	12 cup/mini 24 cup	100	31	\$182.10	\$148.20	\$120.40
19144W-513	19 x 14 x 4	12 cup jumbo	50	27	\$178.80	\$145.40	\$118.20



* Waterfall window

RETAIL PRICE LIST

In-stock Windowed Cupcake Gable Boxes

SEE PAGE 40
OF PRODUCT CATALOG



RETAIL PRICE PER CASE

STOCK NUMBER	SIZE		CASE PACK	WEIGHT PER CASE	UNDER 1000 PRICE	1000 PRICE	2500 PRICE
GB844W-195*	8 x 4 x 4	2 cup/jumbo 2 cup	100	13	\$125.00	\$101.70	\$82.70
GB844W-513*	8 x 4 x 4	2 cup/jumbo 2 cup	100	11	\$129.30	\$105.10	\$85.50

* Waterfall window

In-stock Non-Windowed Cupcake Boxes

SEE PAGE 41
OF PRODUCT CATALOG

Available in white, kraft, strawberry and chocolate.

One-piece lock corner, 100% recycled material



RETAIL PRICE PER BUNDLE

STOCK NUMBER	SIZE		BUNDLE PACK	WEIGHT PER BDL	UNDER 1000 PRICE	1000 PRICE	2500 PRICE
White Cupcake Boxes							
444B-261	4 x 4 x 4	1 cup	200	16	\$80.20	\$65.30	\$53.10
844B-261	8 x 4 x 4	2 cup/jumbo 2 cup	200	24	\$98.60	\$80.10	\$65.10
774B-261	7 x 7 x 4	4 cup/mini 4 cup	200	34	\$152.10	\$123.70	\$100.60
884B-261	8 x 8 x 4	jumbo 4 cup	200	40	\$156.20	\$127.00	\$103.20
1074B-261	10 x 7 x 4	mini 6 cup	100	18	\$97.40	\$79.30	\$64.40
10104B-261	10 x 10 x 4	6 cup/mini 12 cup	100	26	\$119.80	\$97.40	\$79.30
1294B-261	12 x 9 x 4	jumbo 6 cup	100	25	\$123.70	\$100.60	\$81.80
14104B-261	14 x 10 x 4	12 cup/mini 24 cup	100	43	\$151.20	\$123.00	\$100.00
19144B-261	19 x 14 x 4	jumbo 12 cup	50	32	\$140.30	\$114.10	\$92.90
Kraft Cupcake Boxes							
444B-194	4 x 4 x 4	1 cup	200	16	\$76.20	\$61.90	\$50.30
844B-194	8 x 4 x 4	2 cup/ jumbo 2 cup	200	22	\$94.80	\$77.10	\$62.60
774B-194	7 x 7 x 4	4 cup/mimi 4 cup	200	35	\$143.10	\$116.40	\$94.60
884B-194	8 x 8 x 4	jumbo 4 cup	200	38	\$135.60	\$110.30	\$89.70
1074B-194	10 x 7 x 4	mini 6 cup	100	18	\$93.60	\$76.20	\$61.90
10104B-194	10 x 10 x 4	6 cup/mini 12 cup	100	26	\$110.70	\$89.90	\$73.10
1294B-194	12 x 9 x 4	jumbo 6 cup	100	26	\$119.10	\$96.80	\$78.70
14104B-194	14 x 10 x 4	12 cup/mini 24 cup	100	39	\$145.50	\$118.30	\$96.20
19144B-194	19 x 14 x 4	jumbo 12 cup	50	34	\$135.30	\$109.90	\$89.40
Strawberry Cupcake Boxes							
444B-195	4 x 4 x 4	1 cup	200	15	\$79.40	\$64.50	\$52.50
844B-195	8 x 4 x 4	2 cup/jumbo 2 cup	200	22	\$99.50	\$80.80	\$65.60
774B-195	7 x 7 x 4	4 cup/mini 4 cup	200	33	\$150.20	\$122.10	\$99.20
884B-195	8 x 8 x 4	jumbo 4 cup	200	37	\$146.50	\$119.10	\$96.80
1074B-195	10 x 7 x 4	mini 6 cup	100	19	\$97.40	\$79.30	\$64.40
10104B-195	10 x 10 x 4	6 cup/mini 12 cup	100	28	\$118.10	\$95.90	\$78.00
1294B-195	12 x 9 x 4	jumbo 6 cup	100	30	\$123.70	\$100.60	\$81.80
14104B-195	14 x 10 x 4	12 cup/mini 24 cup	100	37	\$151.20	\$123.00	\$100.00
19144B-195	19 x 14 x 4	jumbo 12 cup	50	35	\$140.30	\$114.10	\$92.90
Chocolate Cupcake Boxes							
444B-513	4 x 4 x 4	1 cup	200	13	\$83.80	\$68.10	\$55.30
844B-513	8 x 4 x 4	2 cup/jumbo 2 cup	200	20	\$102.40	\$83.20	\$67.70
774B-513	7 x 7 x 4	4 cup/mini 4 cup	200	31	\$154.00	\$125.20	\$101.80
884B-513	8 x 8 x 4	jumbo 4 cup	200	36	\$152.70	\$124.10	\$100.80
1074B-513	10 x 7 x 4	mini 6 cup	100	16	\$100.20	\$81.50	\$66.20
10104B-513	10 x 10 x 4	6 cup/mini 12 cup	100	23	\$127.10	\$103.40	\$84.00
1294B-513	12 x 9 x 4	jumbo 6 cup	100	23	\$133.30	\$108.40	\$88.00
14104B-513	14 x 10 x 4	12 cup/mini 24 cup	100	33	\$151.80	\$123.30	\$100.20
19144B-513	19 x 14 x 4	jumbo 12 cup	50	31	\$150.80	\$122.60	\$99.70

FOR HOT STAMPING SEE CHART ON PAGE 37

In-stock Cake Pads & Circles

Single and double wall mottled white,
gold scalloped and grease resistant

SEE PAGE 42
OF PRODUCT CATALOG

RESALE PRICE PER CASE



STOCK NUMBER	SIZE	CASE PACK	WEIGHT PER CASE	UNDER 1000 PRICE	1000 PRICE	2500 PRICE
Single and Double Wall, Mottled White or Gold Scalloped Cake Pads						
1410SWCP	Single Wall White Pad 1/4 Sheet	100	12	\$83.20	\$67.70	\$55.00
1813SWCP	Single Wall White Pad 1/2 Sheet	100	21	\$158.90	\$129.30	\$105.10
2618SWCP	Single Wall White Pad Full Sheet	100	37	\$282.00	\$229.20	\$186.40
1410SGCP	Single Wall Gold Pad 1/4 Sheet	100	16	\$171.30	\$139.20	\$113.10
1813SGCP	Single Wall Gold Pad 1/2 Sheet	100	22	\$335.40	\$272.70	\$221.80
2618SGCP	Single Wall Gold Pad Full Sheet	50	19	\$305.50	\$248.40	\$201.90
1410DWCP	Double Wall White Pad 1/4 Sheet	50	10	\$59.80	\$48.60	\$39.50
1813DWCP	Double Wall White Pad 1/2 Sheet	50	18	\$113.80	\$92.50	\$75.20
2618DWCP	Double Wall White Pad Full Sheet	50	29	\$193.10	\$156.90	\$127.60
1410DGCP	Double Wall Gold Pad 1/4 Sheet	50	9	\$98.70	\$80.20	\$65.30
1813DGCP	Double Wall Gold Pad 1/2 Sheet	50	17	\$193.10	\$156.90	\$127.60
2618DGCP	Double Wall Gold Pad Full Sheet	50	32	\$347.50	\$282.60	\$229.70
Single and Double Wall, White with Grease Resistant Coating						
1410SWCPGR	Single Wall White Pad 1/4 Sheet	100	12	\$108.00	\$87.80	\$71.50
1813SWCPGR	Single Wall White Pad 1/2 Sheet	100	23	\$206.00	\$167.40	\$136.10
2618SWCPGR	Single Wall White Pad Full Sheet	100	39	\$364.70	\$296.60	\$241.10
1410DWCPGR	Double Wall White Pad 1/4 Sheet	50	9	\$77.60	\$63.10	\$51.30
1813DWCPGR	Double Wall White Pad 1/2 Sheet	50	17	\$148.40	\$120.70	\$98.10
2618DWCPGR	Double Wall White Pad Full Sheet	50	30	\$252.60	\$205.40	\$167.00
White Cake Circles						
6WCC	6" White Cake Circle	100	3	\$26.40	\$21.60	\$17.50
7WCC	7" White Cake Circle	100	4	\$35.30	\$28.70	\$23.40
8WCC	8" White Cake Circle	100	5	\$42.60	\$34.60	\$28.10
9WCC	9" White Cake Circle	100	6	\$55.60	\$45.30	\$36.90
10WCC	10" White Cake Circle	100	7	\$60.50	\$49.20	\$39.90
12WCC	12" White Cake Circle	100	10	\$85.80	\$69.80	\$56.70
14WCC	14" White Cake Circle	100	14	\$110.70	\$89.90	\$73.10
16WCC	16" White Cake Circle	100	19	\$145.40	\$118.20	\$96.10
18WCC	18" White Cake Circle	100	21	\$169.70	\$137.90	\$112.10
Gold Cake Circles						
6GCC	6" Gold Cake Circle	100	3	\$49.20	\$39.90	\$32.50
7GCC	7" Gold Cake Circle	100	3	\$63.40	\$51.50	\$41.90
8GCC	8" Gold Cake Circle	100	5	\$82.20	\$66.80	\$54.30
9GCC	9" Gold Cake Circle	100	8	\$103.00	\$83.80	\$68.10
10GCC	10" Gold Cake Circle	100	7	\$125.30	\$101.90	\$82.90
12GCC	12" Gold Cake Circle	100	14	\$180.20	\$146.50	\$119.10
14GCC	14" Gold Cake Circle	100	15	\$244.10	\$198.40	\$161.30
White with Grease Resistant Coating						
6WCCGR	6" White Cake Circle	100	3	\$34.70	\$28.30	\$23.00
7WCCGR	7" White Cake Circle	100	4	\$46.30	\$37.50	\$30.60
8WCCGR	8" White Cake Circle	100	5	\$55.60	\$45.30	\$36.90
9WCCGR	9" White Cake Circle	100	6	\$73.10	\$59.40	\$48.30
10WCCGR	10" White Cake Circle	100	9	\$78.90	\$64.20	\$52.10
12WCCGR	12" White Cake Circle	100	10	\$111.60	\$90.70	\$73.80
14WCCGR	14" White Cake Circle	100	14	\$145.20	\$118.10	\$95.90

RETAIL PRICE LIST

SEE PAGE 43
OF PRODUCT CATALOG

In-stock Windowed Bakery Boxes

Windowed white bakery boxes are one-piece SBS, white inside and out.
Windowed kraft bakery boxes are one-piece natural kraft.

RESALE PRICE PER CASE



STOCK NUMBER	SIZE		CASE PACK	WEIGHT PER CASE	UNDER 1000 PRICE	1000 PRICE	2500 PRICE
Windowed White Bakery Boxes							
663AW-126	6 x 6 x 3	glued 6 corner beers	200	20	\$230.10	\$187.00	\$152.10
852AW-126	8 x 5-3/4 x 2-1/2	glued 6 corner beers	200	19	\$247.60	\$201.40	\$163.60
882AW-126	8 x 8 x 2-1/2	glued 4 corner beers	250	31	\$335.20	\$272.50	\$221.50
884AWFL-126*	8 x 8 x 4	glued 4 corner beers	150	27	\$247.10	\$200.90	\$163.40
885AW-126	8 X 8 X 5	glued 4 corner beers	100	23	\$223.60	\$181.80	\$147.70
944AW-126	9 x 4 1/2 x 4	glued 4 corner beers	250	37	\$358.90	\$291.80	\$237.20
992AW-126	9 x 9 x 2-1/2	glued 4 corner beers	250	35	\$351.70	\$285.90	\$232.40
994AWFL-126*	9 x 9 x 4	glued 4 corner beers	150	29	\$276.20	\$224.60	\$182.60
995AW-126	9 x 9 x 5	glued 4 corner beers	100	28	\$226.80	\$184.40	\$150.00
1084AW-126	10 x 8 x 4	glued 4 corner beers	125	27	\$228.60	\$185.90	\$151.20
10102AW-126	10 x 10 x 2-1/2	glued 4 corner beers	150	26	\$240.90	\$195.90	\$159.20
10105W-126	10 x 10 x 5	lock corner	150	38	\$287.10	\$233.40	\$189.70
10105AW-126	10 x 10 x 5	glued 4 corner beers	100	31	\$253.10	\$205.90	\$167.30
12125W-126	12 x 12 x 5	lock corner	100	35	\$281.20	\$228.60	\$185.90
1252AW-126	12-1/2 x 5-1/2 x 2-1/4	glued 4 corner beers	200	26	\$361.80	\$294.10	\$239.10
1382AW-126	13 x 8-3/8 x 2-1/4	glued 6 corner beers	100	18	\$180.30	\$146.60	\$119.20
14104W-126	14 x 10 x 4	lock corner	100	28	\$222.70	\$181.00	\$147.20
14104AW-126	14 x 10 x 4	glued 4 corner beers	100	36	\$282.90	\$230.10	\$187.00
14104AWFL-126*	14 x 10 x 4	glued 4 corner beers	100	34	\$277.80	\$225.80	\$183.60
19144W-126	19 x 14 x 4	lock corner	50	24	\$191.40	\$155.60	\$126.50
19144AW-126	19 x 14 x 4	glued 4 corner beers	50	26	\$202.10	\$164.20	\$133.60
26193W-261**	27-1/2 x 19 x 3	full sheet lid; lock corner	50	21	\$169.50	\$137.80	\$112.00



STOCK NUMBER	SIZE		CASE PACK	WEIGHT PER CASE	UNDER 1000 PRICE	1000 PRICE	2500 PRICE
Windowed Kraft Bakery Boxes							
663AW-501	6 x 6 x 3	glued 6 corner beers	200	18	\$215.70	\$175.40	\$142.70
852AW-501	8 x 5-3/4 x 2-1/2	glued 6 corner beers	200	17	\$240.60	\$195.60	\$159.00
882AW-501	8 x 8 x 2-1/2	glued 4 corner beers	250	28	\$311.90	\$253.60	\$206.10
884AWFL-501*	8 x 8 x 4	glued 4 corner beers	150	26	\$238.70	\$194.10	\$157.80
944AW-501	9 x 4 1/2 x 4	glued 4 corner beers	250	35	\$337.80	\$274.70	\$223.30
992AW-501	9 x 9 x 2-1/2	glued 4 corner beers	250	34	\$328.10	\$266.70	\$216.80
993AW-501	9 x 9 x 3	glued 4 corner beers	200	29	\$296.40	\$240.90	\$195.90
994AWFL-501*	9 x 9 x 4	glued 4 corner beers	150	29	\$256.80	\$208.80	\$169.70
995AW-501	9 x 9 x 5	glued 4 corner beers	100	25	\$212.00	\$172.40	\$140.10
1084AW-501	10 x 8 x 4	glued 4 corner beers	125	26	\$215.60	\$175.30	\$142.60
10102AW-501	10 x 10 x 2-1/2	glued 4 corner beers	150	24	\$225.50	\$183.20	\$149.00
10105W-501	10 x 10 x 5	lock corner	150	34	\$281.00	\$228.50	\$185.80
10105AW-501	10 x 10 x 5	glued 4 corner beers	100	37	\$235.80	\$191.60	\$155.80
12125W-501	12 x 12 x 5	lock corner	100	31	\$260.40	\$211.70	\$172.00
1252AW-501	12-1/2 x 5-1/2 x 2-1/4	glued 4 corner beers	200	23	\$353.40	\$287.30	\$233.50
14104W-501	14 x 10 x 4	lock corner	100	25	\$199.30	\$162.00	\$131.70
14104AW-501	14 x 10 x 4	glued 4 corner beers	100	29	\$263.10	\$213.90	\$173.90
14104AWFL-501*	14 x 10 x 4	front load, glued 4 corner	100	33	\$251.60	\$204.50	\$166.30
19144W-501	19 x 14 x 4	lock corner	50	31	\$174.60	\$142.00	\$115.40
19144AW-501	19 x 14 x 4	glued 4 corner beers	50	23	\$188.60	\$153.30	\$124.70

*FRONT LOAD

**RECYCLED WHITE BOARD

In-stock Heavy Sheet Cake Boxes

Base is white B Flute corrugated tray, lock corner. Windowed lid is glued 4 corner style and SBS board, white inside and out.

RESALE PRICE PER CASE

STOCK NUMBER	SIZE		CASE PACK	WEIGHT PER CASE	UNDER 1000 PRICE	1000 PRICE	2500 PRICE
14105W-408/126	14-1/4 x 10 x 5-1/8		50	26	\$247.10	\$200.90	\$163.30
19145W-408/126	19-1/16 x 14-1/4 x 5-1/8		25	20	\$178.40	\$145.00	\$117.90

In-stock VIEWit™ Bakery Boxes

Natural Kraft - Folding boxes Automatic
4 corner with VIEWIT™ window.

SEE PAGE 44
OF PRODUCT CATALOG

RESALE PRICE PER CASE

STOCK NUMBER	SIZE		CASE PACK	WEIGHT PER CASE	UNDER 1000 PRICE	1000 PRICE	2500 PRICE
V444AW-501	4 x 4 x 4	Auto bottom tuck top	175	13	\$169.80	\$138.10	\$112.30
V862AW-501	8 x 6 x 2	Glued 4 corner beers	175	14	\$152.80	\$124.20	\$100.90
V882AW-501	8 x 8 x 2-1/2	Glued 4 corner beers	150	18	\$196.00	\$159.40	\$129.50
V883AW-501	8 x 8 x 3-1/2	Glued 4 corner beers	150	24	\$227.80	\$185.30	\$150.60
V992AW-501	9 x 9 x 2-1/2	Glued 4 corner beers	150	19	\$208.30	\$169.50	\$137.80
V9935AW-501	9 x 9 x 3-1/2	Glued 4 corner beers	150	31	\$251.60	\$204.50	\$166.30



In-stock Pizza Boxes

Made with 100% Recycled Materials

SEE PAGE 45
OF PRODUCT CATALOG

RESALE PRICE PER BUNDLE

STOCK NUMBER	SIZE		BUNDLE PACK	WEIGHT PER BDL	UNDER 1000 PRICE	1000 PRICE	2500 PRICE
Lock Corner Pizza Boxes							
1 Piece Lock Corner, White							
881P-261	8 x 8 x 1-1/2		100	11	\$52.60	\$42.90	\$34.80
991P-261	9 x 9 x 1-1/2		100	13	\$61.90	\$50.30	\$40.90
10101P-261	10 x 10 x 1-1/2		100	15	\$71.80	\$58.40	\$47.50
12121P-261	12 x 12 x 1-1/2		100	24	\$110.30	\$89.70	\$72.90
14141P-261	14 x 14 x 1-1/2		100	37	\$152.70	\$124.10	\$100.80
882P-261	8 x 8 x 2		100	13	\$57.50	\$46.60	\$38.00
992P-261	9 x 9 x 2		100	15	\$65.40	\$53.20	\$43.20
10102P-261	10 x 10 x 2		100	18	\$77.60	\$63.10	\$51.30
12102P-261	12 x 10 x 2 (two piece)		100	24	\$96.80	\$78.70	\$64.00
12102PH-261	12 x 10 x 2 Heavy (two piece)		100	30	\$111.80	\$90.80	\$73.90
12122P-261	12 x 12 x 2		100	25	\$113.10	\$92.00	\$74.80
12122PH-261	12 x 12 x 2 Heavy		100	31	\$133.10	\$108.10	\$87.90
14142P-261	14 x 14 x 2		100	40	\$165.20	\$134.30	\$109.20
16162P-261	16 x 16 x 2		100	52	\$207.00	\$168.30	\$136.80
4 Corner Automatic Pizza Boxes							
1 Piece Automatic Beers Style, White							
771AP-261	7 x 7 x 1-1/2		300	32	\$179.20	\$145.70	\$118.50
10101AP-261	10 x 10 x 1-1/2		200	39	\$195.90	\$159.20	\$129.40
12121AP-261	12 x 12 x 1-1/2		100	30	\$158.00	\$128.60	\$104.50
14141AP-261	14 x 14 x 1-1/2		100	38	\$173.20	\$140.90	\$114.60
16161AP-261	16 x 16 x 1-1/2		100	48	\$281.70	\$229.00	\$186.30
Printed Pizza Boxes							
Chef's Classic Graphic Lock Corner, White							
992PSP-261	9 x 9 x 2		100	15	\$65.40	\$53.20	\$43.20
10102PSP-261	10 x 10 x 2		100	18	\$77.60	\$63.10	\$51.30
12122PSP-261	12 x 12 x 2		100	27	\$113.10	\$92.00	\$74.80
14142PSP-261	14 x 14 x 2		100	40	\$165.20	\$134.30	\$109.20
16162PSP-261	16 x 16 x 2		100	54	\$207.00	\$168.30	\$136.80



RETAIL PRICE LIST

In-stock Cup Carriers & Trays

Folding boxes with automatic bottoms.
Made with Natural Kraft.

SEE PAGE 46
OF PRODUCT CATALOG

RESALE PRICE PER CASE

STOCK NUMBER	SIZE	DESCRIPTION	CASE PACK	WEIGHT PER CASE	UNDER 1000 PRICE	1000 PRICE	2500 PRICE
668C-501	6 7/16 x 6 7/16 x 8 3/8	4 cup 16 oz	200	20	\$150.80	\$122.60	\$99.70
739C-501	7 1/2 x 3 5/8 x 9	2 cup 32 oz	250	22	\$176.20	\$143.30	\$116.50
779C-501	7 x 7 x 9-1/4	4 Cup 32 oz (Expandable Handle)	200	32	\$220.10	\$179.00	\$145.50
7710C-501	7 1/4 x 7 x 9 1/4	4 cup 32 oz	100	13	\$98.60	\$80.10	\$65.10
962C-501	9 3/8 x 6-5/8 x 2 5/8	strap tray	250	22	\$120.00	\$97.60	\$79.40
1052C-501	9-7/8 x 5 7/8 x 2 1/2	j tray	250	18	\$128.10	\$104.20	\$84.70
1162C-501	10-7/8 x 6 5/8 x 2 5/8	strap tray	250	22	\$120.90	\$98.30	\$80.00



In-stock Stackable Meal Boxes

Folding boxes with automatic bottoms. Boxes fold flat for easy storage and assemble in seconds. White with Kraft Interior (000), Kraft (501) & Red Checkerboard - kraft interior (159)

SEE PAGE 46
OF PRODUCT CATALOG

RESALE PRICE PER CASE

STOCK NUMBER	SIZE	CASE PACK	WEIGHT PER CASE	UNDER 1000 PRICE	1000 PRICE	2500 PRICE
84TB-159	8 x 4-7/8 x 5-1/4	100	21	\$137.10	\$111.40	\$90.60
856TB-159	8-7/8 x 5 x 6-3/4 (10 lb)	150	37	\$230.60	\$187.50	\$152.40
856TB-261	8-7/8 x 5 x 6-3/4 (10 lb)	150	37	\$221.00	\$179.70	\$146.10
856TB-501	8-7/8 x 5 x 6-3/4 (10 lb)	150	33	\$217.10	\$176.40	\$143.40



FOR HOT STAMPING SEE CHART ON PAGE 37

In-stock One-Piece Gable Boxes

Folding boxes with automatic bottoms. Boxes fold flat for easy storage and assemble in seconds.

SEE PAGE 47
OF PRODUCT CATALOG

RESALE PRICE PER CASE

STOCK NUMBER	SIZE	CASE PACK	WEIGHT PER CASE	UNDER 1000 PRICE	1000 PRICE	2500 PRICE
White Gloss - Kraft Interior						
GB42-000	4 x 2-1/2 x 2-1/2	250	13	\$211.80	\$172.30	\$140.00
GB64-000	6 x 4 x 4	100	11	\$124.40	\$101.30	\$82.30
GB84-000	8 x 4-7/8 x 5-1/4	100	17	\$155.80	\$126.70	\$103.00
GB853-000	8-7/8 x 5 x 3-1/2	250	37	\$290.20	\$235.90	\$191.90
GB856-000	8-7/8 x 5 x 6-3/4	150	30	\$208.90	\$169.80	\$138.10
GB955-000	9-1/2 x 5 x 5	125	23	\$189.60	\$154.10	\$125.30
Natural Kraft with Varnish Pinstripe						
GB42-501	4 x 2-1/2 x 2-1/2	250	13	\$197.80	\$160.80	\$130.80
GB64-501	6 x 4 x 4	100	11	\$105.30	\$85.60	\$69.60
GB84-501	8 x 4-7/8 x 5-1/4	100	17	\$133.80	\$108.80	\$88.50
GB853-501	8-7/8 x 5 x 3-1/2	250	37	\$248.60	\$202.20	\$164.40
GB856-501	8-7/8 x 5 x 6-3/4	150	30	\$180.30	\$146.60	\$119.20
GB955-501	9-1/2 x 5 x 5	125	23	\$165.20	\$134.30	\$109.20
Tinted Kraft Colors Black (511), French Blue (148), Apple Green (144), Gold (141), and Red (149). All with varnish pinstripe.						
GB84	8 x 4-7/8 x 5-1/4	100	17	\$146.20	\$118.80	\$96.70
GB853	8-7/8 x 5 x 3-1/2	250	37	\$269.70	\$219.30	\$178.20
GB955	9-1/2 x 5 x 5	125	23	\$179.70	\$146.10	\$118.70



FOR HOT STAMPING SEE CHART ON PAGE 37

In-stock Deli Boxes

Boxes fold flat for easy storage and assemble in seconds.

SEE PAGE 48
OF PRODUCT CATALOG

RESALE PRICE PER CASE

STOCK NUMBER	SIZE	CASE PACK	WEIGHT PER CASE	UNDER 1000 PRICE	1000 PRICE	2500 PRICE
Snak-Pak Boxes- One-piece six corner beers folding boxes - White with kraft interiors.						
953S-261	9-7/8 x 5-1/2 x 2-7/8	200	31	\$156.20	\$127.00	\$103.20
1063S-261	9-7/8 x 6-3/8 x 3-7/16	150	34	\$174.30	\$141.70	\$115.30
1293S-261	12-1/2 x 9-3/8 x 3-1/2	100	41	\$188.60	\$153.30	\$124.70
973SW-261	9-1/4 x 7-3/8 x 3-1/8 (Window)	150	31	\$215.60	\$175.30	\$142.60
Deli Boxes - Folding boxes are made with heavy white with kraft interiors board.						
953D-261	9 X 5 X 3	200	25	\$236.90	\$192.60	\$156.70
954D-261	9 x 5 x 4 (Auto Bottom)	200	28	\$260.40	\$211.70	\$172.00
992D-261	9 X 9 X 2 1/2	150	30	\$140.70	\$114.40	\$93.00
Meat Boxes - 1 piece auto bottom, white with kraft interiors						
1055M-261	10 X 5 X 5 1/2	200	43	\$249.50	\$202.80	\$165.00
Fast Top Boxes - Folding boxes are made with White SBS, Automatic Bottom						
742FT-126	7 x 4-1/2 x 2-3/4	500	36	\$262.10	\$213.10	\$173.20
843FT-126	8-7/8 x 4-7/8 x 3-1/16	400	36	\$253.60	\$206.10	\$167.60
954FT-126	9 x 5 x 4	250	28	\$177.40	\$144.30	\$117.20
Handi-Snak Boxes - Folding boxes are made with White SBS, Automatic Bottom						
325HS-126	3 x 2 5/8 x 5	250	13	\$198.60	\$161.40	\$131.20
Gable Boxes - Folding boxes are made with White SBS, Automatic Bottom						
GB853-126	8-7/8 x 5 x 3-1/2	250	47	\$302.40	\$245.80	\$199.90

FOR HOT STAMPING SEE CHART ON PAGE 37



In-stock Catering Boxes

Boxes fold flat for easy storage and assemble in seconds.

SEE PAGE 49
OF PRODUCT CATALOG

RESALE PRICE PER BDL / CASE

STOCK NUMBER	SIZE	BUNDLE PACK	WEIGHT PER BDL	UNDER 1000 PRICE	1000 PRICE	2500 PRICE
Handled Catering Boxes - B-Flute corrugated construction. Boxes have an easy open/close front flap for loading/unloading and are notched for easy stacking. Bundles are poly wrapped and shipped flat.						
White outside and kraft interior						
Handled Box - Tuck top lid with diecut display						
21134BF-408	21-1/2 x 13-3/8 x 4	25	27	\$165.80	\$134.90	\$109.70
Handled Tray						
13114BF-408	13-1/2 x 11 x 4	25	11	\$92.00	\$74.80	\$60.80
22134BF-408	22-1/2 x 14-1/2 x 4	25	16	\$123.70	\$100.60	\$81.80
Tray Lids						
13111BFCOV-408	14-3/8 X 11-1/2 X 1-1/2	25	6	\$72.80	\$59.30	\$48.20
22141BFCOV-408	22-7/8 X 14 X 1-1/2	25	10	\$103.50	\$84.10	\$68.40
Natural Kraft						
Handled Box - Tuck top lid with diecut display						
21134KF-408	21-1/2 x 13-3/8 x 4	25	27	\$155.70	\$126.60	\$102.90
Handled Tray						
13114KF-408	13-1/2 x 11 x 4	25	22	\$87.40	\$71.00	\$57.70
22134KF-408	22-1/2 x 14-1/2 x 4	25	16	\$108.50	\$88.30	\$71.70
Tray Lids						
13111KFCOV-408	14-3/8 X 11-1/2 X 1-1/2	25	6	\$68.80	\$55.90	\$45.40
22141KFCOV-408	22-7/8 X 14 X 1-1/2	25	10	\$97.40	\$79.30	\$64.40
Hot and Cold Beverage Containers - Easy to fill insulated nylon bag keeps coffee and other non-carbonated beverages hot or cold for 2+ hours. Made with durable corrugated. Easy set up and fill.						
96.OZ-BEV	96 oz	25	12	\$327.20	\$266.00	\$216.30
160.OZ-BEV	160 oz / 1.25 gal	20	13	\$342.50	\$278.40	\$226.40



CANDY BOXES

Everyday Sizes

Two Piece Candy Boxes with Rigid Base and Lid

#005 White Krome

SEE PAGE 52-53
OF PRODUCT CATALOG

RESALE PRICE PER 100

STOCK NUMBER	SIZE	DESCRIPTION	CASE PACK	WEIGHT PER CASE	UNDER 1000 PRICE	1000 PRICE	2500 PRICE
804	3-1/2 x 3-1/4 x 1-1/8	1/8 lb	100	7	\$77.30	\$68.40	\$60.50
808	6-1/2 x 3-1/2 x 1-1/8	1/4 lb	100	10	\$101.00	\$89.40	\$79.10
815	8-1/8 x 5-1/4 x 1-1/8	1/2 lb	50	9	\$117.70	\$104.20	\$92.20
830	10-1/2 x 8-1/8 x 1-1/8	1 lb	50	14	\$161.50	\$142.90	\$126.50
ADD FOR HOT STAMPING					\$40.40	\$32.20	\$26.90

Minimum imprinting charge per STYLE is \$200.00



Everyday Sizes

Two Piece Candy Boxes with Rigid Base and Lid

Available in Assorted Colors

SEE PAGE 52-53
OF PRODUCT CATALOG

804, 808S, 815S, 830S

2007 - Gold Diamond
2044 - Elegant Gold
2045 - Black Onyx
2023 - Red Diamond

2251 - Dark Chocolate
2290 / 2057 - Cocoa
2290 - Cocoa (804 Only)
2380 - Cherry Cordial

804, 808S, 815S, 830S

602 / 2248 - Burgundy / Gold
2251 / 2296 - Caramel / Dark Chocolate
2251 / 2357 - Mint / Dark Chocolate
2251 / 2390 - Metallic Rose Pebble / Dark Chocolate

2090 / 2392 - Sapphire / Silver Silk
2090 / 2393 - Plum / Silver Silk
2057 / 2054 - Latte / Cocoa
2056 / 570 - Coffee / Cream

RESALE PRICE PER 100

STOCK NUMBER	SIZE	DESCRIPTION	CASE PACK	WEIGHT PER CASE	UNDER 1000 PRICE	1000 PRICE	2500 PRICE
804	3-1/2 x 3-1/4 x 1-1/8	1/8 lb	100	7	\$111.30	\$98.50	\$87.20
808	6-1/2 x 3-1/2 x 1-1/8	1/4 lb	100	10	\$124.60	\$110.30	\$97.60
815	8-1/8 x 5-1/4 x 1-1/8	1/2 lb	50	9	\$165.20	\$146.20	\$129.40
830	10-1/2 x 8-1/8 x 1-1/8	1 lb	50	14	\$232.10	\$205.40	\$181.80
ADD FOR HOT STAMPING					\$40.40	\$32.20	\$26.90

Minimum imprinting charge per STYLE is \$200.00



Large Assortment

Two Piece Candy Boxes with Rigid Base and Lid

SEE PAGE 54
OF PRODUCT CATALOG

845

860

890, 8905

2007 - Gold Diamond
2044 - Elegant Gold
2023 - Red Diamond
2290 / 2057 - Cocoa

2007 - Gold Diamond

2007 - Gold Diamond
2044 - Elegant Gold

RESALE PRICE PER 100

STOCK NUMBER	SIZE	DESCRIPTION	CASE PACK	WEIGHT PER CASE	UNDER 1000 PRICE	1000 PRICE	2500 PRICE
845	15-3/4 X 8-1/8 X 1-1/8	1-1/2 lb	20	8	\$336.30	\$297.60	\$263.40
860	16-3/8 X 10-9/16 X 1-1/8	2 lb	20	9	\$369.60	\$327.10	\$289.50
890	16-1/4 X 15-3/4 X 1-1/8	3 lb	10	11	\$969.70	\$858.10	\$759.40
8905	24-3/8 X 15 3/4 X 1-3/16	5 lb	10	16	\$5,302.40	\$4,692.40	\$4,152.60
ADD FOR HOT STAMPING					\$40.40	\$32.20	\$26.90

Minimum imprinting charge per STYLE is \$200.00



Double Layer

Two Piece Candy Boxes with Rigid Base and Lid

SEE PAGE 55
OF PRODUCT CATALOG

8152

8152

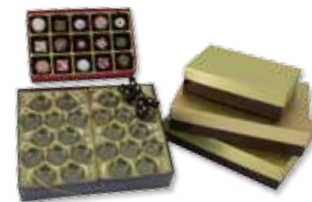
2002 / 2007 - Gold Diamond / Chocolate

2002 / 2007 - Gold Diamond / Chocolate
2002 / 2044 - Elegant Gold / Chocolate

RESALE PRICE PER 100

STOCK NUMBER	SIZE	DESCRIPTION	CASE PACK	WEIGHT PER CASE	UNDER 1000 PRICE	1000 PRICE	2500 PRICE
8152	8-1/8 X 5-1/4 X 2-3/16	1 lb	50	7	\$195.00	\$172.60	\$152.70
8302	10-1/2 X 8-1/8 X 2-3/16	2 lb	20	8	\$390.60	\$345.70	\$305.90
8902	16-1/4 X 15-3/4 X 2-7/16	5 lb	10	21	\$2,636.10	\$2,332.80	\$2,064.40
ADD FOR HOT STAMPING					\$40.40	\$32.20	\$26.90

Minimum imprinting charge per STYLE is \$200.00



Everyday Sizes
Two Piece Candy Boxes with Rigid Base and VIEWit Lid
 Available #005 White Krome

SEE PAGE 56
 OF PRODUCT CATALOG



RESALE PRICE PER 100

STOCK NUMBER	SIZE	DESCRIPTION	CASE PACK	WEIGHT PER CASE	UNDER 1000 PRICE	1000 PRICE	2500 PRICE
V204	3-1/2 x 3-1/4 x 1-1/8	1/8 lb	100	5	\$72.80	\$64.40	\$57.00
V208	6-1/2 x 3-1/2 x 1-1/8	1/4 lb	100	7	\$90.70	\$80.30	\$71.10
V215	8-1/8 x 5-1/4 x 1-1/8	1/2 lb	50	7	\$104.40	\$92.40	\$81.80
V230	10-1/2 x 8-1/8 x 1-1/8	1 lb	50	10	\$148.30	\$131.20	\$116.10
ADD FOR HOT STAMPING					\$40.40	\$32.20	\$26.90

Minimum imprinting charge per STYLE is \$200.00

Everyday Sizes
Two Piece Candy Boxes with Rigid Base and VIEWit Lid
 Available in Assorted Colors

SEE PAGE 56
 OF PRODUCT CATALOG



V204, V208, V215, V230

- 2007 - Gold Diamond
- 2023 - Red Diamond
- 2045 - Black Onyx
- 2057 - Cocoa
- 2090 - Silver Silk

RESALE PRICE PER 100

STOCK NUMBER	SIZE	DESCRIPTION	CASE PACK	WEIGHT PER CASE	UNDER 1000 PRICE	1000 PRICE	2500 PRICE
V204	3-1/2 x 3-1/4 x 1-1/8	1/8 lb	100	5	\$93.70	\$82.90	\$73.40
V208	6-1/2 x 3-1/2 x 1-1/8	1/4 lb	100	7	\$117.70	\$104.20	\$92.20
V215	8-1/8 x 5-1/4 x 1-1/8	1/2 lb	50	7	\$148.30	\$131.20	\$116.10
V230	10-1/2 x 8-1/8 x 1-1/8	1 lb	50	10	\$182.00	\$161.10	\$142.60
ADD FOR HOT STAMPING					\$40.40	\$32.20	\$26.90

Minimum imprinting charge per STYLE is \$200.00

Large Assortment
Two Piece Candy Boxes with Rigid Base and VIEWit Lid

SEE PAGE 57
 OF PRODUCT CATALOG



V245 **V260, V290**

- 2007 - Gold Diamond
- 2023 - Red Diamond
- 2057 - Cocoa
- 2007 - Gold Diamond

RESALE PRICE PER 100

STOCK NUMBER	SIZE	DESCRIPTION	CASE PACK	WEIGHT PER CASE	UNDER 1000 PRICE	1000 PRICE	2500 PRICE
V245	15-3/4 x 8-1/8 x 1-1/8	1-1/2 lb	20	7	\$390.60	\$345.70	\$305.90
V260	16-3/8 x 10-9/16 x 1-1/8	2 lb	20	13	\$397.20	\$351.50	\$311.10
V290	16-1/4 x 15-3/4 x 1-1/8	3 lb	10	10	\$1,020.60	\$903.20	\$799.30
ADD FOR HOT STAMPING					\$40.40	\$32.20	\$26.90

Minimum imprinting charge per STYLE is \$200.00

Pretzel Box
Two Piece Candy Boxes with Rigid Base and VIEWit Lid

SEE PAGE 58
 OF PRODUCT CATALOG



V207

- 2007 - Gold Diamond
- 2023 - Red Diamond
- 2057 - Cocoa

RESALE PRICE PER 100

STOCK NUMBER	SIZE	DESCRIPTION	CASE PACK	WEIGHT PER CASE	UNDER 1000 PRICE	1000 PRICE	2500 PRICE
V207	7-9/16 x 7-9/16 x 2-5/16	1 lb +	30	10	\$274.10	\$242.60	\$214.70
ADD FOR HOT STAMPING					\$40.40	\$32.20	\$26.90

Minimum imprinting charge per STYLE is \$200.00

Pretzel Box Paperboard Insert
 4 Cavity (3-11/16 X 3-11/16 X 2)

1004-126	11-7/16 x 11-7/16	White Paperboard	30	4	\$49.30	\$43.60	\$38.60
----------	-------------------	------------------	----	---	---------	---------	---------



Favor Box

SEE PAGE 59
OF PRODUCT CATALOG

Two Piece Candy Boxes with Rigid Base and VIEWit Lid

V202, V202X2

005 - White Krome (V202 Only)

2007 - Gold Diamond

2045 - Black Onyx

2090 - Silver Silk (V202 Only)

RESALE PRICE PER 100

STOCK NUMBER	SIZE	DESCRIPTION	CASE PACK	WEIGHT PER CASE	UNDER 1000 PRICE	1000 PRICE	2500 PRICE
V202*	3-1/2 x 2-1/8 x 1-3/8	1 oz	100	5	\$86.70	\$76.70	\$67.90
V202X2	7 x 2-1/8 x 1-3/8	2 oz	100	7	\$128.00	\$113.30	\$100.30
ADD FOR HOT STAMPING					\$40.40	\$32.20	\$26.90

Minimum imprinting charge per STYLE is \$200.00

Favor Box Tray

2 Cavities (1-1/4 x 1-1/4)

TR8021/B-153	3-1/2 x 2-1/8	Gold	100	1	\$23.80	\$21.10	\$18.70
TR8021/B-190	3-1/2 x 2-1/8	Brown	100	1	\$23.80	\$21.10	\$18.70



Logo Gift Box

SEE PAGE 60
OF PRODUCT CATALOG

Two Piece Candy Boxes with Rigid Base and VIEWit Lid

Our candy boxes have clear lids and are great for all small gifts.

Think of a corporate giveaway or a teacher's present. Tray and box sold together pre-assembled. ONLY Available in Cocoa (2057)

Cavity Dimensions: Three (1-1/4 x 1-1/4) and One Logo Bar (4 x 2-1/2)

RESALE PRICE PER 100

STOCK NUMBER	SIZE	DESCRIPTION	CASE PACK	WEIGHT PER CASE	UNDER 1000 PRICE	1000 PRICE	2500 PRICE
V213T-2057	5-1/8 x 5-1/8 x 1-1/8		30	4	\$296.30	\$262.20	\$232.00
ADD FOR HOT STAMPING					\$40.40	\$32.20	\$26.90

Minimum imprinting charge per STYLE is \$200.00



Tall Box

SEE PAGE 60
OF PRODUCT CATALOG

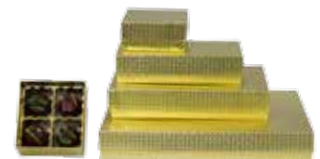
Two Piece Candy Boxes with Rigid Base and Lid

Only available in Gold Diamond (2007)

RESALE PRICE PER 100

STOCK NUMBER	SIZE	DESCRIPTION	CASE PACK	WEIGHT PER CASE	UNDER 1000 PRICE	1000 PRICE	2500 PRICE
804D	3-1/2 x 3-1/4 x 1-1/2	1/8 lb	100	7	\$150.20	\$132.90	\$117.60
808D	6-1/2 x 3-1/2 x 1-1/2	1/4 lb	100	11	\$192.80	\$170.60	\$151.00
815D	8-1/8 x 5-1/4 x 1-1/2	1/2 lb	50	11	\$252.70	\$223.60	\$197.90
830D	10-1/2 x 8-1/8 x 1-1/2	1 lb	50	15	\$394.70	\$349.30	\$309.10
V215D	8-1/8 x 5-1/4 x 1-1/2 *VINYL LID*	1/2 lb	50	11	\$252.30	\$223.30	\$197.60
ADD FOR HOT STAMPING					\$40.40	\$32.20	\$26.90

Minimum imprinting charge per STYLE is \$200.00



Long Box

SEE PAGE 61
OF PRODUCT CATALOG

Two Piece Candy Boxes with Rigid Base and VIEWit Lid

These clear lid candy boxes are great for fudge samplers, truffles, loose candy and nut samplers.

These boxes utilize our Small Tray Collection - TR8081, TR8001, TR8061, and TR8012.

Only available in Gold Diamond (2007)

RESALE PRICE PER 100

STOCK NUMBER	SIZE	DESCRIPTION	CASE PACK	WEIGHT PER CASE	UNDER 1000 PRICE	1000 PRICE	2500 PRICE
V216	7 x 6-1/2 x 1-1/8		40	6	\$232.80	\$206.00	\$182.30
V203	9-3/4 x 3-1/2 x 1-1/8		50	6	\$159.70	\$141.30	\$125.00
V205	16-1/4 x 3-1/2 x 1-1/8		25	5	\$314.30	\$278.10	\$246.10
ADD FOR HOT STAMPING					\$40.40	\$32.20	\$26.90

Minimum imprinting charge per STYLE is \$200.00



**Holiday Packaging
Two Piece Candy Boxes**

SEE PAGE 62-63
OF PRODUCT CATALOG



RESALE PRICE PER 100

STOCK NUMBER	SIZE	CASE PACK	WEIGHT PER CASE	UNDER 1000 PRICE	1000 PRICE	2500 PRICE
2310 - Red Snow Flake, 2366/2391 - Season's Greetings / Gold Silk, 005/2418 - Hearts O' Plenty / White, 2332/2411, 2332/2411 - Lilac / Spring Floral						
804*	3-1/2 x 3-1/4 x 1-1/8 - 1/8 lb	100	7	\$156.20	\$138.20	\$122.30
808	6-1/2 x 3-1/2 x 1-1/8 - 1/4 lb	100	10	\$174.50	\$154.40	\$136.60
815	8-1/8 x 5-1/4 x 1-1/8 - 1/2 lb	50	9	\$230.90	\$204.30	\$180.80
830	10-1/2 x 8-1/8 x 1-1/8 - 1 lb	50	14	\$325.20	\$287.80	\$254.70
2417 - Watercolor Hearts						
V204	3-1/2 x 3-1/4 x 1-1/8 - 1/8 lb	100	5	\$156.20	\$138.20	\$122.30
V208	6-1/2 x 3-1/2 x 1-1/8 - 1/4 lb	100	7	\$174.50	\$154.40	\$136.60
V215	8-1/8 x 5-1/4 x 1-1/8 - 1/2 lb	50	7	\$230.90	\$204.30	\$180.80
V230	10-1/2 x 8-1/8 x 1-1/8 - 1 lb	50	10	\$325.20	\$287.80	\$254.70
ADD FOR HOT STAMPING				\$40.40	\$32.20	\$26.90

Minimum imprinting charge per STYLE is \$200.00
*Not Available in 2366/2391 - Season's Greetings/Gold Silk

Holiday Candy Trays

SEE PAGE 62-63
OF PRODUCT CATALOG



RESALE PRICE PER 100

STOCK NUMBER	SIZE	CASE PACK	WEIGHT PER CASE	UNDER 1000 PRICE	1000 PRICE	2500 PRICE
Star / Snowflake Shaped - Silver (154)						
TR8320-154	10-1/2 X 8-1/8, 20 Cavities	250	12	\$82.50	\$73.00	\$64.60
TR8320/A-154	10-1/2 X 8-1/8, 20 Cavities	100	6	\$85.30	\$75.50	\$66.80
TR8320/B-154	10-1/2 X 8-1/8, 20 Cavities	50	3	\$87.70	\$77.60	\$68.70
Christmas Tree Shaped - Gold (153)						
TR8418-153	10 1/2 X 8-1/8, 18 Cavities	100	6	\$85.30	\$75.50	\$66.80
TR8418/A-153	10 1/2 X 8-1/8, 18 Cavities	50	3	\$87.70	\$77.60	\$68.70
Small Heart Shaped Cavity - Gold (153)						
TR8204-153	3-1/2 X 3-1/4, Open Cavity	1000	6	N/A	\$14.20	\$12.60
TR8204/A-153	3-1/2 X 3-1/4, Open Cavity	200	2	\$24.40	\$21.60	\$19.10
TR8204/B-153	3-1/2 X 3-1/4, Open Cavity	100	2	\$25.70	\$22.70	\$20.10
Large Heart Shaped Cavity - Gold (153)						
TR8216-153	10-1/2 X 8-1/8, Open Cavity	500	17	\$82.50	\$73.00	\$64.60
TR8216/A-153	10-1/2 X 8-1/8, Open Cavity	100	6	\$85.30	\$75.50	\$66.80
TR8216/B-153	10-1/2 X 8-1/8, Open Cavity	50	3	\$87.70	\$77.60	\$68.70

Conversation Boxes

SEE PAGE 64
OF PRODUCT CATALOG

These two-tone 1/2 lb. candy boxes are great for Sweetest Day and Valentine's Day. Boxes can hold one interchangeable candy tray.

RESALE PRICE PER 100



STOCK NUMBER	COLOR	SIZE	CASE PACK	WEIGHT PER CASE	UNDER 1000 PRICE	1000 PRICE	2500 PRICE
815S-LOVE	Red / White Krome	8-1/8 X 5-1/4 X 1-1/8	50	10	\$186.00	\$164.60	\$145.70
815S-XOXO	Pink / White Krome						
815S-THANK	Green / White Krome						
815S-JUST	Purple / White Krome						
815S-HEARTU	Blue / White Krome						
Assortment contains 10 each of the above styles.					PRICE PER CASE		
815SASST-CNV		8-1/8 X 5-1/4 X 1-1/8	50	10	\$102.90	\$91.10	\$80.60

Macaron Boxes

Two Piece Candy Boxes with Rigid Base and VIEWit Lid

- 005 - Krome
- 602 - Gold
- 2045 - Black Onyx
- 2057 - Cocoa
- 2342 - Red

SEE PAGE 65
OF PRODUCT CATALOG



RESALE PRICE PER 100

STOCK NUMBER	SIZE	CASE PACK	WEIGHT PER CASE	UNDER 1000 PRICE	1000 PRICE	2500 PRICE
V2206	8-1/8 x 2-5/8 x 2-3/16 6 PC	100	15	\$181.40	\$160.50	\$142.00
V2212	8-1/8 x 5-1/4 x 2-3/16 12 PC	50	11	\$220.20	\$194.90	\$172.50
V2224	10-1/2 x 8-1/8 x 2-3/16 24 PC	20	7	\$359.70	\$318.30	\$281.70
ADD FOR HOT STAMPING				\$40.40	\$32.20	\$26.90

Minimum imprinting charge per STYLE is \$200.00

Macaron Tray 6 Cavity (2-5/16 x 1-1/4)

TR8006-100	8-1/8 x 2- 5/8	500	4	\$39.60	\$35.00	\$31.00
TR8006/A-100	8-1/8 x 2- 5/8	100	2	\$51.40	\$45.50	\$40.30



Jumbo Strawberry Inserts made from food grade SBS paperboard 3 or 6 Cavity (2-9/16 x 2-1/2)

1003-126	2-9/16 x 15-11/16 3 Cavity	100	2	\$32.80	\$29.00	\$25.70
1006-126	8-15/16 x 15-11/16 6 Cavity	50	4	\$46.80	\$41.40	\$36.60

1003-126 fits V2206 box 1006-126 fits V2212 & V2224 box



Candy Box Trays

Small Tray Collection

SEE PAGE 66
OF PRODUCT CATALOG

RESALE PRICE PER 100

STOCK NUMBER	SIZE	COLOR	CASE PACK	WEIGHT PER CASE	UNDER 1000 PRICE	1000 PRICE	2500 PRICE
TR8081-153	6-1/2 x 3-1/2, 8 Sq Cavities Splits in Half	Gold	500	6	\$44.00	\$38.90	\$34.40
TR8081/A-153	6-1/2 x 3-1/2, 8 Sq Cavities Splits in Half	Gold	100	2	\$52.10	\$46.10	\$40.80
TR8081-190	6-1/2 x 3-1/2, 8 Sq Cavities Splits in Half	Brown	500	6	\$44.00	\$38.90	\$34.40
TR8081/A-190	6-1/2 x 3-1/2, 8 Sq Cavities Splits in Half	Brown	100	2	\$52.10	\$46.10	\$40.80
TR8061-153	6-1/2 x 3-1/2, 6 Square Cavities	Gold	500	6	\$44.00	\$38.90	\$34.40
TR8061/A-153	6-1/2 x 3-1/2, 6 Square Cavities	Gold	100	2	\$52.10	\$46.10	\$40.80
TR8061-190	6-1/2 x 3-1/2, 6 Square Cavities	Brown	500	6	\$44.00	\$38.90	\$34.40
TR8061/A-190	6-1/2 x 3-1/2, 6 Square Cavities	Brown	100	2	\$52.10	\$46.10	\$40.80
TR8012-153	6-1/2 x 3-1/2, 2 Square Splits in Half	Gold	500	6	\$44.00	\$38.90	\$34.40
TR8012/A-153	6-1/2 x 3-1/2, 2 Square Splits in Half	Gold	100	2	\$52.10	\$46.10	\$40.80
TR8012-190	6-1/2 x 3-1/2, 2 Square Splits in Half	Brown	500	6	\$44.00	\$38.90	\$34.40
TR8012/A-190	6-1/2 x 3-1/2, 2 Square Splits in Half	Brown	100	2	\$52.10	\$46.10	\$40.80
TR8001-153	6-1/2 x 3-1/2, 1 Rectangular Cavity	Gold	500	6	\$44.00	\$38.90	\$34.40
TR8001/A-153	6-1/2 x 3-1/2, 1 Rectangular Cavity	Gold	100	3	\$52.10	\$46.10	\$40.80
TR8001-190	6-1/2 x 3-1/2, 1 Rectangular Cavity	Brown	500	6	\$44.00	\$38.90	\$34.40
TR8001/A-190	6-1/2 x 3-1/2, 1 Rectangular Cavity	Brown	100	3	\$52.10	\$46.10	\$40.80



Candy Box Trays
Interchangeable* Tray Collection

SEE PAGE 67
 OF PRODUCT CATALOG

RESALE PRICE PER 100

STOCK NUMBER	SIZE	COLOR	CASE PACK	WEIGHT PER CASE	UNDER 1000 PRICE	1000 PRICE	2500 PRICE
TR8151-153	8-1/8 x 5-1/4, 15 Square Cavities	Gold	500	10	\$68.80	\$60.90	\$53.90
TR8151/A-153	8-1/8 x 5-1/4, 15 Square Cavities	Gold	100	3	\$76.80	\$68.00	\$60.20
TR8151-190	8-1/8 x 5-1/4, 15 Square Cavities	Brown	500	10	\$52.10	\$46.10	\$40.80
TR8151/A-190	8-1/8 x 5-1/4, 15 Square Cavities	Brown	100	3	\$60.20	\$53.30	\$47.20
TR8121-153	8-1/8 x 5-1/4, 12 Circular Cavities	Gold	500	11	\$68.80	\$60.90	\$53.90
TR8121/A-153	8-1/8 x 5-1/4, 12 Circular Cavities	Gold	100	3	\$76.80	\$68.00	\$60.20
TR8121-190	8-1/8 x 5-1/4, 12 Circular Cavities	Brown	500	10	\$52.10	\$46.10	\$40.80
TR8121/A-190	8-1/8 x 5-1/4, 12 Circular Cavities	Brown	100	3	\$60.20	\$53.30	\$47.20
TR8064-153	8 1/8 x 5 1/4, 6 Square Cavities	Gold	500	13	\$68.80	\$60.90	\$53.90
TR8064/A-153	8-1/8 x 5-1/4, 6 Square Cavities	Gold	100	4	\$76.80	\$68.00	\$60.20
TR8064-190	8 1/8 x 5 1/4, 6 Square Cavities	Brown	500	13	\$52.10	\$46.10	\$40.80
TR8064/A-190	8-1/8 x 5-1/4, 6 Square Cavities	Brown	100	4	\$60.20	\$53.30	\$47.20
TR8011-153	8-1/8 x 5-1/4, 1 Rectangular Cavity	Gold	500	11	\$68.80	\$60.90	\$53.90
TR8011/A-153	8-1/8 x 5-1/4, 1 Rectangular Cavity	Gold	100	3	\$76.80	\$68.00	\$60.20
TR8011-190	8-1/8 x 5-1/4, 1 Rectangular Cavity	Brown	500	11	\$52.10	\$46.10	\$40.80
TR8011/A-190	8-1/8 x 5-1/4, 1 Rectangular Cavity	Brown	100	3	\$60.20	\$53.30	\$47.20
TR8091-153	8-1/8 x 5-1/4, 9 Square Cavities and 1 Bar	Gold	500	11	\$68.80	\$60.90	\$53.90
TR8091/A-153	8-1/8 x 5-1/4, 9 Square Cavities and 1 Bar	Gold	100	3	\$76.80	\$68.00	\$60.20
TR8091-190	8-1/8 x 5-1/4, 9 Square Cavities and 1 Bar	Brown	500	11	\$52.10	\$46.10	\$40.80
TR8091/A-190	8-1/8 x 5-1/4, 9 Square Cavities and 1 Bar	Brown	100	3	\$60.20	\$53.30	\$47.20
TR8063-153	8-1/8 x 5-1/4, 6 Square Cavities and 3 Bars	Gold	500	11	\$68.80	\$60.90	\$53.90
TR8063/A-153	8-1/8 x 5-1/4, 6 Square Cavities and 3 Bars	Gold	100	3	\$76.80	\$68.00	\$60.20
TR8063-190	8-1/8 x 5-1/4, 6 Square Cavities and 3 Bars	Brown	500	11	\$52.10	\$46.10	\$40.80
TR8063/A-190	8-1/8 x 5-1/4, 6 Square Cavities and 3 Bars	Brown	100	3	\$60.20	\$53.30	\$47.20
TR8064-153	8 1/8 x 5 1/4, 6 Square Cavities	Gold	500	13	\$68.80	\$60.90	\$53.90
TR8064/A-153	8-1/8 x 5-1/4, 6 Square Cavities	Gold	100	4	\$76.80	\$68.00	\$60.20
TR8064-190	8 1/8 x 5 1/4, 6 Square Cavities	Brown	500	13	\$52.10	\$46.10	\$40.80
TR8064/A-190	8-1/8 x 5-1/4, 6 Square Cavities	Brown	100	4	\$60.20	\$53.30	\$47.20
TR8011-153	8-1/8 x 5-1/4, 1 Rectangular Cavity	Gold	500	11	\$68.80	\$60.90	\$53.90
TR8011/A-153	8-1/8 x 5-1/4, 1 Rectangular Cavity	Gold	100	3	\$76.80	\$68.00	\$60.20
TR8011-190	8-1/8 x 5-1/4, 1 Rectangular Cavity	Brown	500	11	\$52.10	\$46.10	\$40.80
TR8011/A-190	8-1/8 x 5-1/4, 1 Rectangular Cavity	Brown	100	3	\$60.20	\$53.30	\$47.20

* These interchangeable trays will fit the following boxes: V215, V215D V230, V245, V260, V290, 815, 815D, 830, 845, 890, 8905, 8152, 8302. Boxes and trays sold separately.

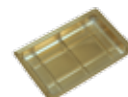


Candy Box Trays
Direct Pour Tray Collection
 Heat stable to 180° F

SEE PAGE 67
 OF PRODUCT CATALOG

RESALE PRICE PER 100

STOCK NUMBER	SIZE	COLOR	CASE PACK	WEIGHT PER CASE	UNDER 1000 PRICE	1000 PRICE	2500 PRICE
TR8065-158	8-1/8 x 5-1/4, 6 Square Cavities	Gold	500	20	\$76.80	\$68.00	\$60.20
TR8065/A-158	8-1/8 x 5-1/4, 6 Square Cavities	Gold	100	6	\$85.30	\$75.50	\$66.80
TR8201-158	8-1/8 x 5-1/4, 1 Rectangular Cavity	Gold	500	19	\$76.80	\$68.00	\$60.20
TR8201/A-158	8-1/8 x 5-1/4, 1 Rectangular Cavity	Gold	100	6	\$85.30	\$75.50	\$66.80
TR8012-158	6-1/2 X 3-1/2, 2 Square Cavities Splits in Half	Gold	500	6	\$52.90	\$46.80	\$41.40
TR8012/A-158	6-1/2 X 3-1/2, 2 Square Cavities Splits in Half	Gold	100	2	\$60.70	\$53.70	\$47.50



Candy Box Trays
Interchangeable Tray Assortments

SEE PAGE 69
 OF PRODUCT CATALOG

RESALE PRICE PER CASE

STOCK NUMBER	SIZE	COLOR	CASE PACK	WEIGHT PER CASE	UNDER 1000 PRICE	1000 PRICE	2500 PRICE
TRASST3-153	SEE BELOW	Gold	100	5	\$71.30	\$63.10	\$55.80

CONTAINS 20 EACH OF - TR8151, TR8121, TR8011 & TR8064 AND 10 EACH OF - TR8063 & TR8091 ALL IN GOLD



RETAIL PRICE LIST

Candy Box Trays Die Cut Platform Boards

SEE PAGE 69
OF PRODUCT CATALOG

RESALE PRICE PER 100

STOCK NUMBER	SIZE	COLOR	CASE PACK	WEIGHT PER CASE	UNDER 1000 PRICE	1000 PRICE	2500 PRICE
PL815-2306	8-1/8 x 5-1/4, 15 Square Cavities	Brown	200	5	\$68.80	\$60.90	\$53.90
PL812-2306	8-1/8 x 5-1/4, 12 Round Cavities	Brown	200	5	\$68.80	\$60.90	\$53.90
1006S-126	8-1/8 x 5-1/4, 6 Cavity Paper Board Insert	White	50	4	\$44.50	\$39.40	\$34.90



Candy Pads

SEE PAGE 70
OF PRODUCT CATALOG

Our Sweet Packaging System candy pads provide cushioning and protection. Made with three-ply, high emboss construction, glassine.

Available in #115 Gold, #156 Birds of Paradise or #184002 Brown/White

RESALE PRICE PER 100

STOCK NUMBER	SIZE	CASE PACK	WEIGHT PER CASE	UNDER 1000 PRICE	1000 PRICE	2500 PRICE
PD8041	3-1/2 x 3-1/4 Fits 804	500	3	\$19.20	\$17.00	\$15.00
PD8041/A	3-1/2 x 3-1/4 Fits 804	100	1	\$33.10	\$29.30	\$25.90
PD8081	6-1/2 x 3-1/2 Fits 808	500	4	\$24.40	\$21.60	\$19.10
PD8081/A	6-1/2 x 3-1/2 Fits 808	100	2	\$35.60	\$31.50	\$27.90
PD8151	8-1/8 x 5-1/4 Fits 815, 8152 & 815D	500	6	\$27.50	\$24.30	\$21.50
PD8151/A	8-1/8 x 5-1/4 Fits 815, 8152 & 815D	100	2	\$35.60	\$31.50	\$27.90
PD8301	10-1/2 x 8-1/8 Fits 830 & 8302	500	12	\$54.90	\$48.60	\$43.00
PD8301/A	10-1/2 x 8-1/8 Fits 830 & 8302	100	3	\$60.20	\$53.30	\$47.20
PD8451/A	15-3/4 x 8-1/8 Fits 845, 890, 8902 & 8905	100	4	\$82.50	\$73.00	\$64.60
PD8451/B	15-3/4 x 8-1/8 Fits 845, 890, 8902 & 8905	20	1	\$112.70	\$99.70	\$88.20



Folding Candy Boxes

SEE PAGE 71
OF PRODUCT CATALOG

RESALE PRICE PER 100

STOCK NUMBER	SIZE	CASE PACK	WEIGHT PER CASE	UNDER 1000 PRICE	1000 PRICE	2500 PRICE
White (000) & Kraft Groove (197)						
7005	5-1/2 x 2-3/4 x 1-3/4 1/2 lb	100	4	\$46.00	\$40.70	\$36.00
7010	7 x 3-3/8 x 2 1 lb	100	6	\$58.80	\$52.00	\$46.00
7015	7-1/4 x 4-3/8 x 2-3/8 1-1/2 lb	100	9	\$110.40	\$97.70	\$86.50
Colors						
Red (2004), Green Leaf (2301), Chocolate (2302), Pink (2303), Gold (2304), & Black Gloss (960)						
7005	5-1/2 x 2-3/4 x 1-3/4 1/2 lb	100	4	\$54.70	\$48.40	\$42.80
7010	7 x 3-3/8 x 2 1 lb	100	5	\$72.00	\$63.70	\$56.40
ADD FOR HOT STAMPING				\$40.40	\$32.20	\$26.90

Minimum imprinting charge per STYLE is \$200.00



Candy Cups

Available in Gold (675), White/Gold (002/115) & Brown/Gold (154/115)

SEE PAGE 72
OF PRODUCT CATALOG

RESALE PRICE PER 100

STOCK NUMBER	SIZE	CASE PACK	WEIGHT PER CASE	UNDER 1000 PRICE	1000 PRICE	2500 PRICE
CP0125	1-1/4 Base	1000	1	\$4.20	\$3.70	\$3.30



Candy cups are NOT included toward quantity discounts



Stretch Loops

Metallic Gold (GLD), Metallic Red (RED), Metallic Silver (SIL)

SEE PAGE 72
OF PRODUCT CATALOG

RESALE PRICE PER 100

STOCK NUMBER	SIZE	CASE PACK	WEIGHT PER CASE	UNDER 1000 PRICE	1000 PRICE	2500 PRICE
ST10	10" Inside Loop Stretch Ties, Bowed	100	1	\$11.20	\$9.90	\$8.80
ST16	16" Inside Loop Stretch Ties, Bowed	100	1	\$11.20	\$9.90	\$8.80
ST19	19" Inside Loop Stretch Ties, Bowed	100	1	\$14.10	\$12.50	\$11.10



Pre-Tied Stretch Bows

3-1/2" Pre-Tied Bows with Stretch Loop

Metallic Gold (GLD), Metallic Silver (SIL), Pink Satin (PNK), Red Satin (RED), Gray Satin (GRY), Vanilla / Gold Polka Dots (VGP), Black / Gold Polka Dots (BLKGP), Burgundy / Gold Polka Dots (BGP), Brown / Copper Polka Dots (BRCP)

SEE PAGE 73
OF PRODUCT CATALOG

RESALE PRICE PER 100

STOCK NUMBER	SIZE	CASE PACK	WEIGHT PER CASE	UNDER 1000 PRICE	1000 PRICE	2500 PRICE
BW2350	3 1/2" 2 Loop Bow w/Stretch Cord	100	1	\$76.80	\$68.00	\$60.20

IMPRINTING INFORMATION

The minimum charge per style is \$200.00.

The styles are:

- SET-UP (Jewelry boxes, VIEWit's, Set-up Apparel, etc...)
- FOLDING (TUCKit™s, Pop-ups, Hat boxes, etc...).

Each imprinted name or logo is a separate order.

- The term imprinting refers to printing or hot stamping.
- Imprinting charges are based on spot logos in one color for an area up to 8 square inches.
- For additional area when Hot Stamping, add 30 cents per square inch per 100 pieces.
- Embossing is available for Jewelry boxes at the imprinting charge plus an additional charge of \$50.00 per order.
- Embossing dies will be quoted when artwork is submitted.
- Imprint position is always horizontal, unless specified otherwise.

PLATES

- Plates will be based on current cost.
- Plates for inactive accounts will be retained for five years. After five years, customer will be subject to new plate charges.
- There will be plate charges for all typesetting, including hot stamping.

PROOFS

- One black and white proof will be supplied upon request at no charge for new orders.
- SIZED and/or POSITIONED proofs may be requested at no additional charge.
- ORDERS ARE NOT SCHEDULED FOR PRODUCTION UNTIL PROOF IS APPROVED.**

EXAMPLE: IN-STOCK IMPRINTING CHARGES

200	TUCKit® Gift Boxes (4 sizes)
2,000	Pop-up Apparel Boxes (2 sizes)
300	Jewelry Boxes (1 size)
2,500	Total

PRICE IMPRINTING FROM 2,500 COLUMN:

200 TUCKit®s (4 sizes) @ \$26.90/per 100	\$53.80
2000 Pop-ups (2 sizes) @ \$26.90/per 100	\$538.00
300 Jewelry Boxes (1 size)* @ \$23.90/per 100	\$200.00*
Total	\$791.80

*Minimum per style = \$200.00; Styles are Set-Up and Folding Boxes
 Note: TUCKit™s & Pop-ups are Folding - use per 100 charge for pricing

BUNDLE/ CASE PACK	UNDER 1000 PRICE	1000 PRICE	2500 PRICE
25	\$13.80	\$11.70	\$10.50
50	\$23.90	\$19.80	\$17.00
100	\$44.00	\$35.80	\$30.50
125	\$54.10	\$43.90	\$37.30
150	\$64.30	\$52.00	\$43.90
200	\$84.50	\$67.90	\$57.20
250	\$104.60	\$84.10	\$70.70
300	\$124.90	\$100.00	\$84.10
400	\$165.20	\$132.20	\$110.80
500	\$205.60	\$164.30	\$137.70

SELECT INKS AND HOT STAMP FOILS FROM THESE LISTS (DISPLAYED IN OUR SWATCH BOOK):

STANDARD INK COLORS:

#100 Bright Yellow	#250 Deep Pink	#325 Dark Blue	#525 Light Gray
#125 Cream	#260 Magenta	#350 Purple	#550 Dark Gray
#151 Orange	#275 Med. Brown	#400 Green	#600 White
#175 Warm Red	#285 Dark Brown	#450 Dark Green	#700 Silver
#200 Dark Red	#300 Bright Blue	#500 Black	#800 Gold
#215 Lt. Burgundy			

STANDARD FOIL COLORS:

#10 Gold	#40 Black	#60 Medium Red	#80 Medium Blue
#11 Matte Gold	#41 Matte Yellow	#63 Matte Red	#83 Matte Blue
#15 Copper	#43 Cream	#65 Dark Red	#85 Dark Blue
#20 Silver	#45 Orange	#70 Med. Green	#90 Magenta
#21 Matte Silver	#47 Matte Orange	#75 Dark Green	#91 Purple
#30 White	#50 Brown	#77 Matte Green	#92 Light Pink
#35 Gray	#54 Maroon	#79 Teal	#95 Metallic Pink